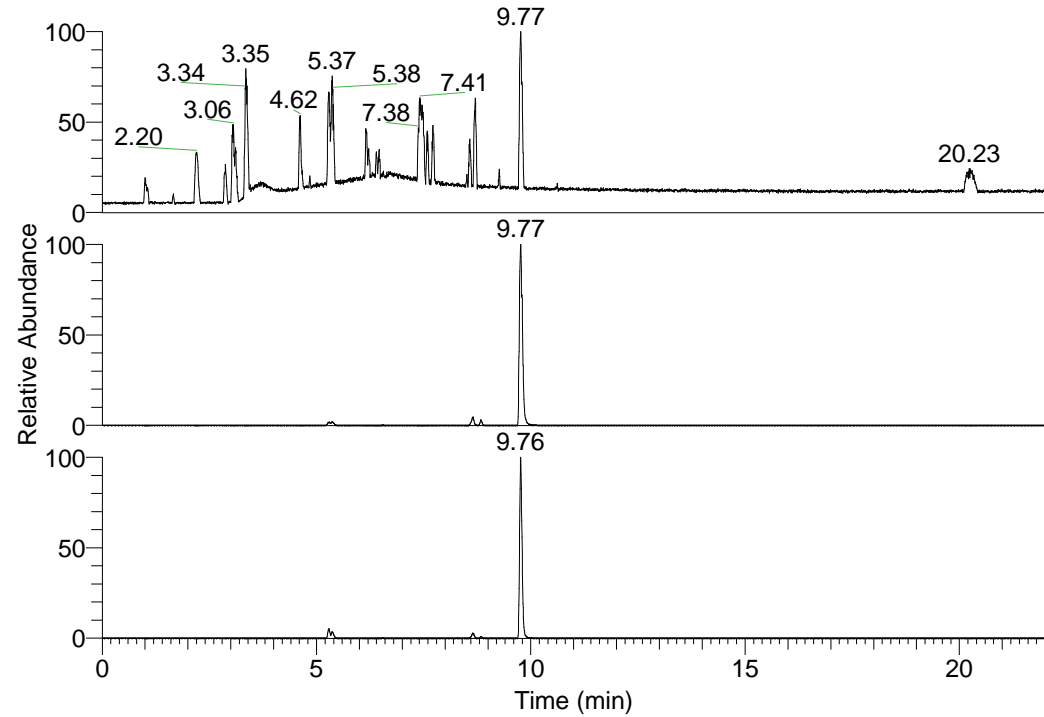


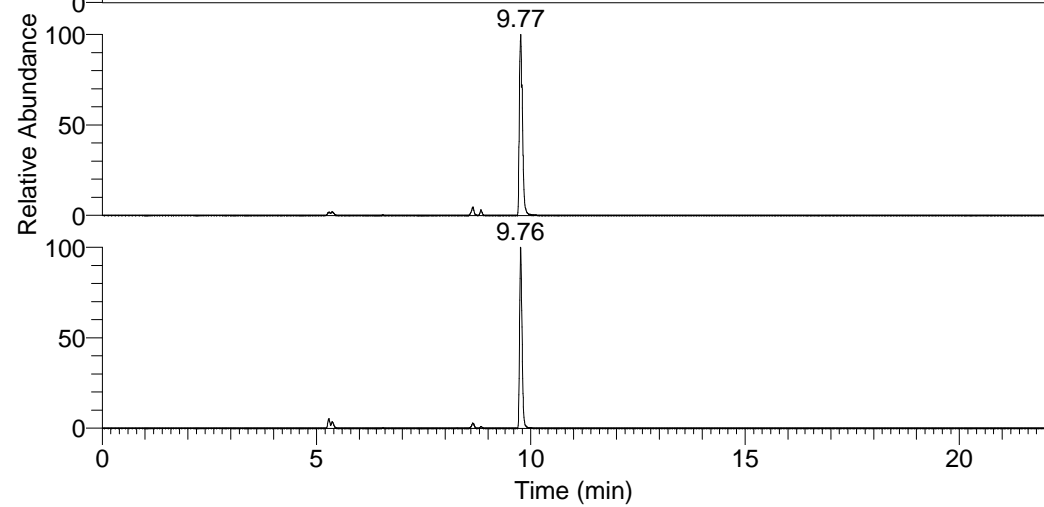
RT: 0.00 - 22.01



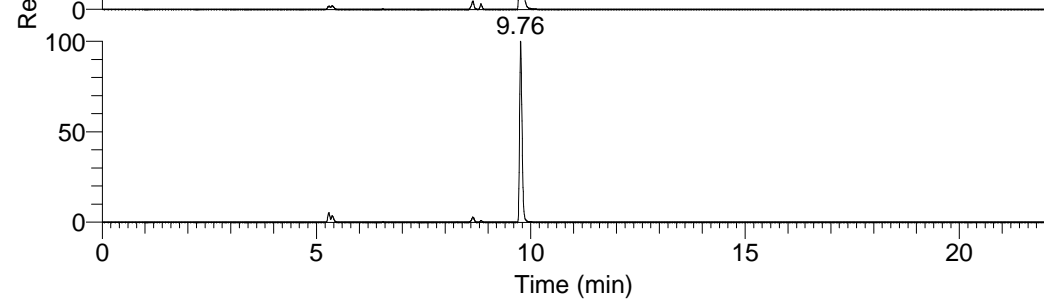
NL: 1.37E8
 Base Peak m/z=
 100.00000-1500.00000 F:
 FTMS + p ESI Full ms
 [100.00-1500.00] MS
 Hololenasp_HDX

Hololenasp_HDX#1433 RT: 8.84
 T: FTMS + p ESI Full ms [100.00-1500.00]
 m/z= 457.00000-458.00000

m/z	Intensity	Relative	Delta (ppm)	Composition
457.37344	4255982.0	100.00	-0.52	C ₂₃ H ₃₃ ² H ₈ O ₃ N ₆
			2.87	C ₂₃ H ₃₁ ² H ₉ O ₃ N ₆
			-3.90	C ₂₃ H ₃₅ ² H ₇ O ₃ N ₆

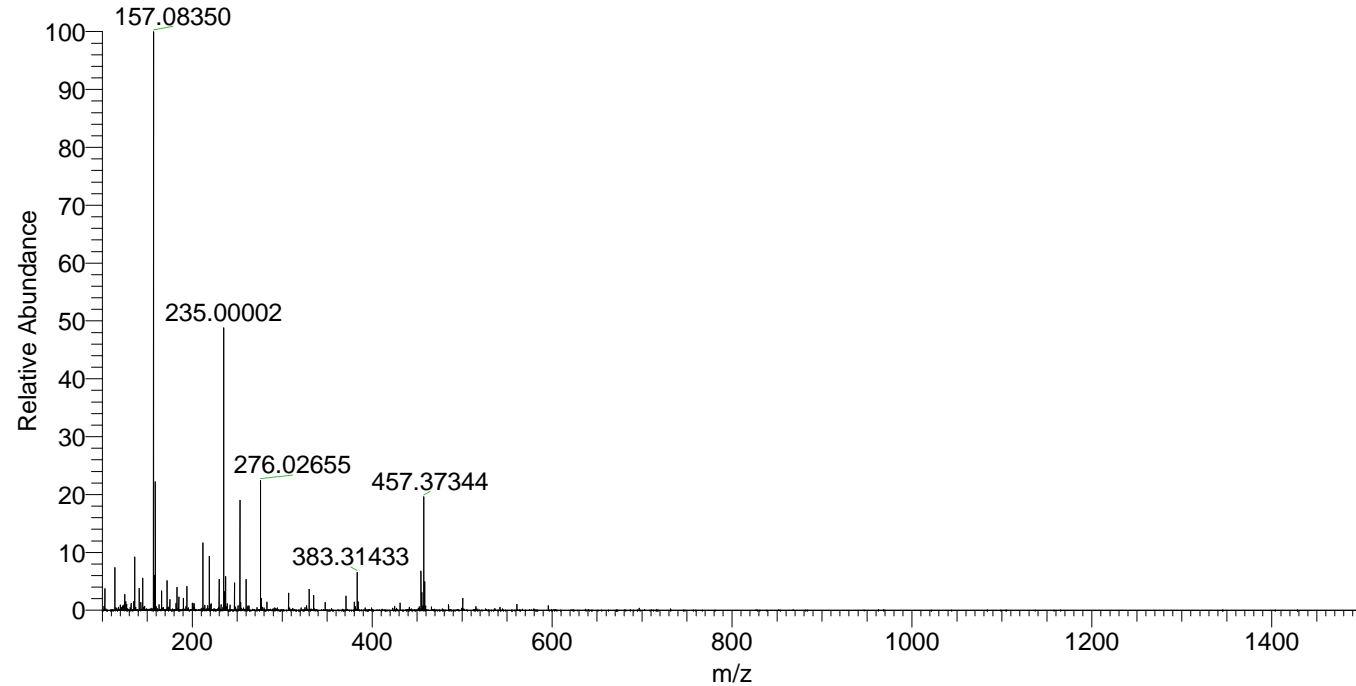


NL: 1.37E8
 Base Peak m/z=
 457.37194-457.37652 F: FTMS
 + p ESI Full ms
 [100.00-1500.00] MS
 Hololenasp_HDX



NL: 1.17E7
 Base Peak m/z=
 229.69302-229.69532 F: FTMS
 + p ESI Full ms
 [100.00-1500.00] MS
 Hololenasp_HDX

Hololenasp_HDX #1433 RT: 8.84 AV: 1 NL: 2.10E7
 T: FTMS + p ESI Full ms [100.00-1500.00]



Hololenasp_HDX #1433 RT: 8.84 AV: 1 NL: 4.11E6
 T: FTMS + p ESI Full ms [100.00-1500.00]

