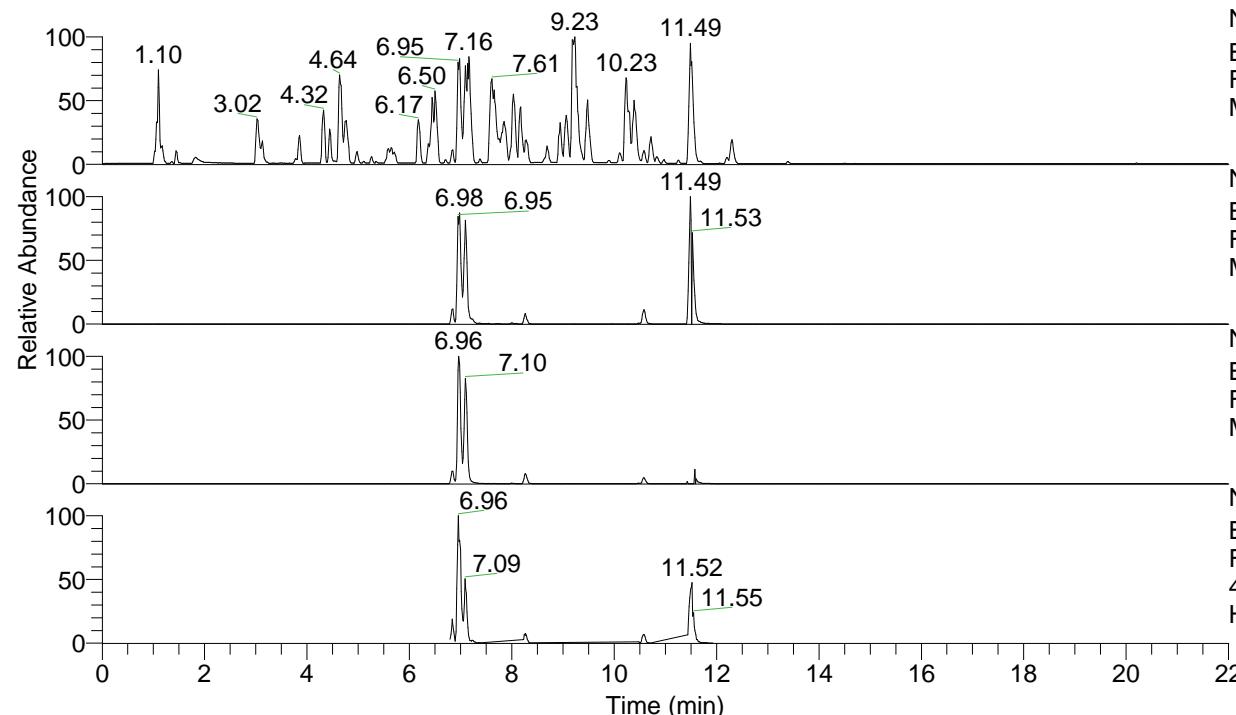


RT: 0.00 - 22.00



NL: 4.98E7
 Base Peak m/z= 100.00000-1500.00000 F:
 FTMS + p ESI Full ms [100.00-1500.00]
 MS Hololenasp

NL: 4.73E7
 Base Peak m/z= 449.32176-449.32626 F:
 FTMS + p ESI Full ms [100.00-1500.00]
 MS Hololenasp

NL: 1.23E7
 Base Peak m/z= 225.16479-225.16705 F:
 FTMS + p ESI Full ms [100.00-1500.00]
 MS Hololenasp

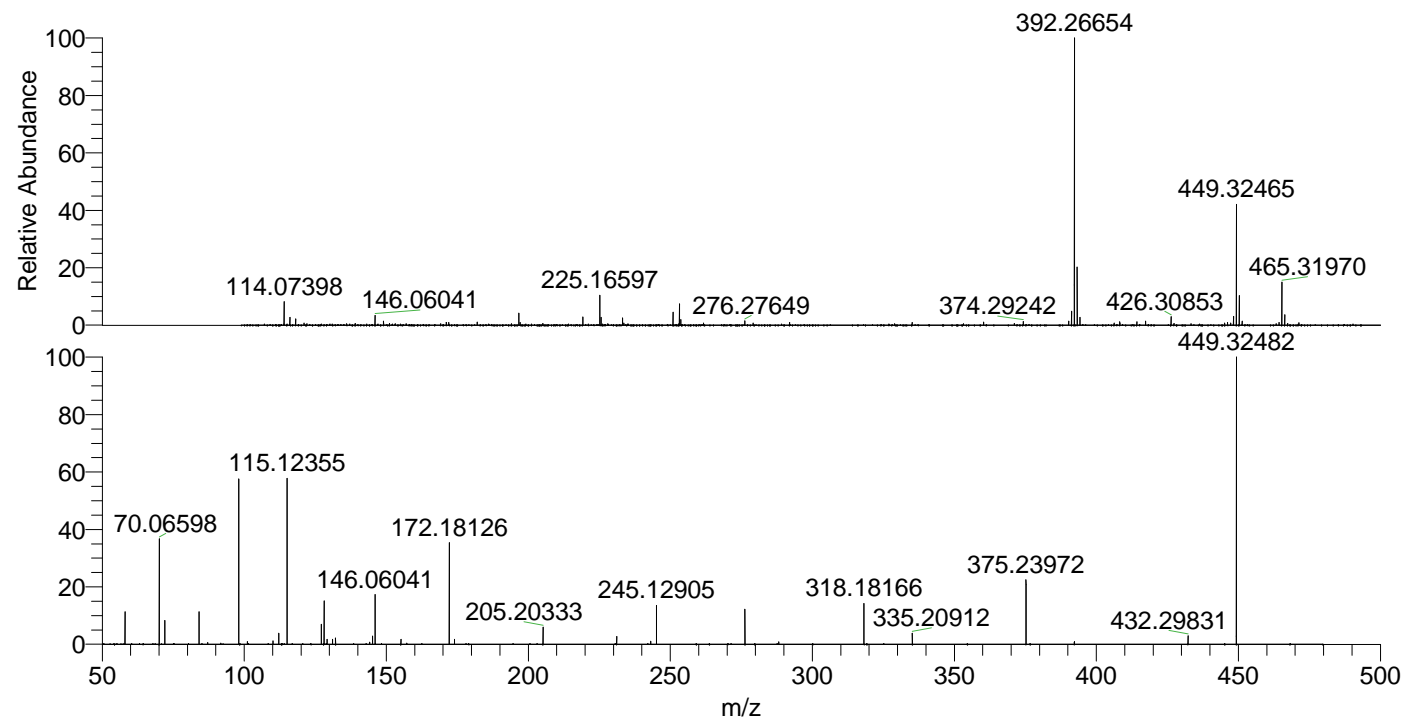
NL: 6.07E6
 Base Peak m/z= 50.00000-1500.00000 F:
 FTMS + p ESI d Full ms2
 449.32@hcd35.00 [50.00-475.00] MS
 Hololenasp

Hololenasp#3294-3315 RT: 8.23-8.29

F: FTMS + p ESI d Full ms2 449.32 ...

m/z= 50.00000-1000.00000

| m/z | Intensity | Relative |
|-----------|-----------|----------|
| 58.06609 | 37905.4 | 11.32 |
| 70.06598 | 121295.6 | 36.22 |
| 72.08162 | 27388.6 | 8.18 |
| 84.08151 | 37706.4 | 11.26 |
| 87.09248 | 2151.7 | 0.64 |
| 98.09714 | 188238.8 | 56.20 |
| 101.10829 | 3106.3 | 0.93 |
| 110.09706 | 3951.1 | 1.18 |
| 112.11270 | 12605.8 | 3.76 |
| 115.12355 | 188385.5 | 56.25 |
| 127.12358 | 22632.8 | 6.76 |
| 128.10744 | 50043.5 | 14.94 |
| 129.13908 | 5562.0 | 1.66 |
| 131.11821 | 5839.4 | 1.74 |
| 132.14983 | 7231.0 | 2.16 |
| 144.15018 | 2326.2 | 0.69 |
| 145.13402 | 9277.7 | 2.77 |
| 146.06041 | 56488.1 | 16.87 |
| 155.15483 | 5599.4 | 1.67 |
| 172.18126 | 115437.4 | 34.47 |
| 174.05578 | 5860.7 | 1.75 |
| 205.20333 | 20077.4 | 5.99 |
| 231.11369 | 9182.7 | 2.74 |
| 243.11408 | 3544.9 | 1.06 |
| 245.12905 | 44801.7 | 13.38 |
| 276.27622 | 40230.4 | 12.01 |
| 288.17130 | 2685.0 | 0.80 |
| 318.18166 | 46325.1 | 13.83 |
| 335.20912 | 12639.9 | 3.77 |
| 375.23972 | 74027.5 | 22.10 |
| 392.26739 | 3222.7 | 0.96 |
| 432.29831 | 9719.6 | 2.90 |
| 449.32482 | 334925.1 | 100.00 |



NL: 9.15E6
 Hololenasp#3307 RT:
 8.26 AV: 1 T: FTMS + p
 ESI Full lock ms
 [100.00-1500.00]

NL: 3.26E5
 Hololenasp#3294-3319
 RT: 8.23-8.29 AV: 5 F:
 FTMS + p ESI d Full ms2
 449.32@hcd35.00
 [50.00-475.00]