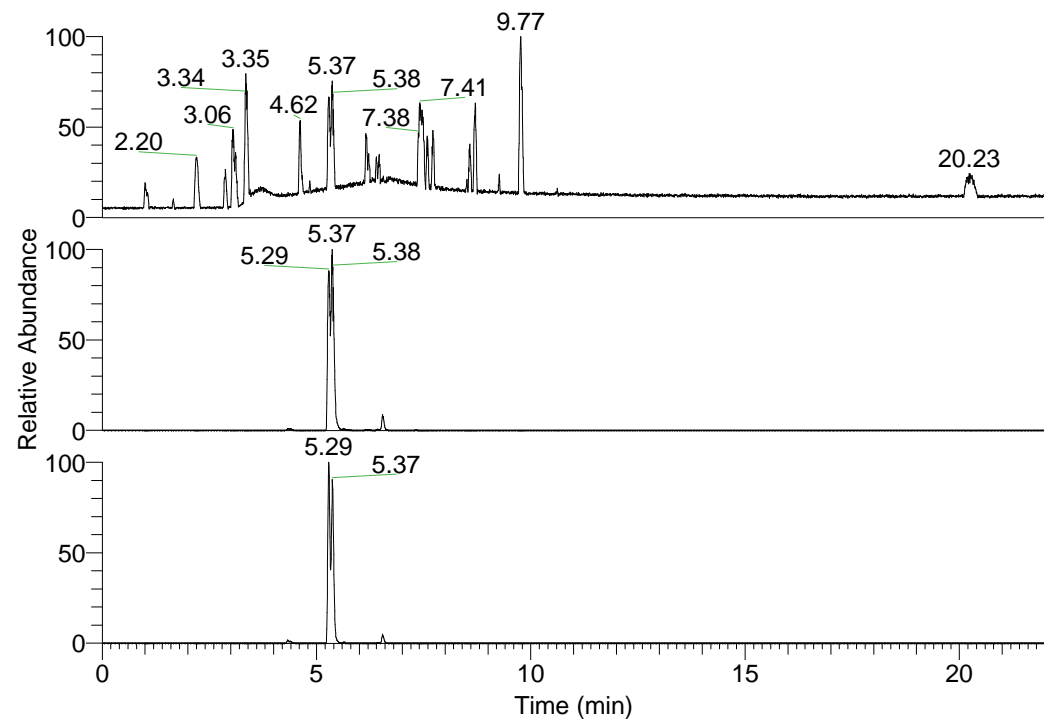


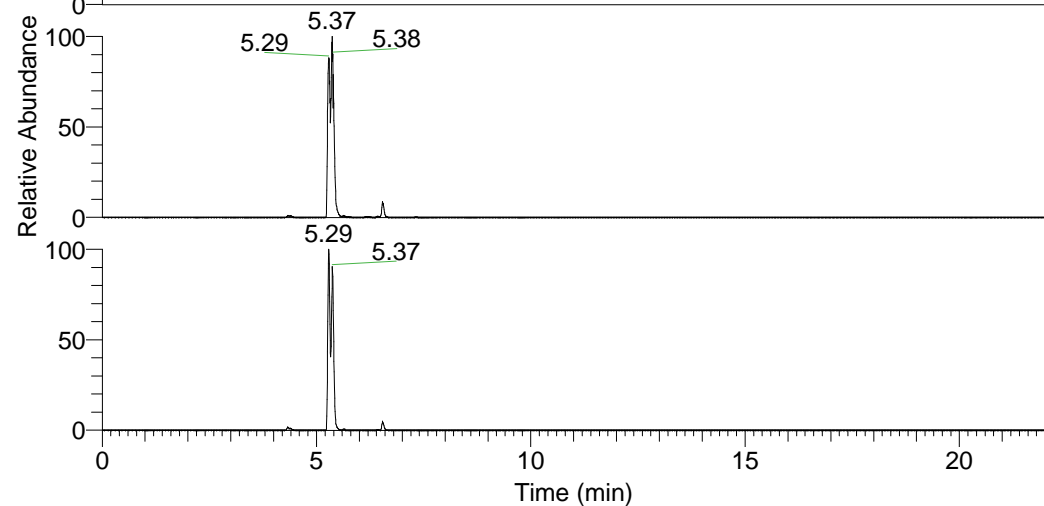
RT: 0.00 - 22.01



NL: 1.37E8
 Base Peak m/z=
 100.00000-1500.00000 F:
 FTMS + p ESI Full ms
 [100.00-1500.00] MS
 Hololenasp_HDX

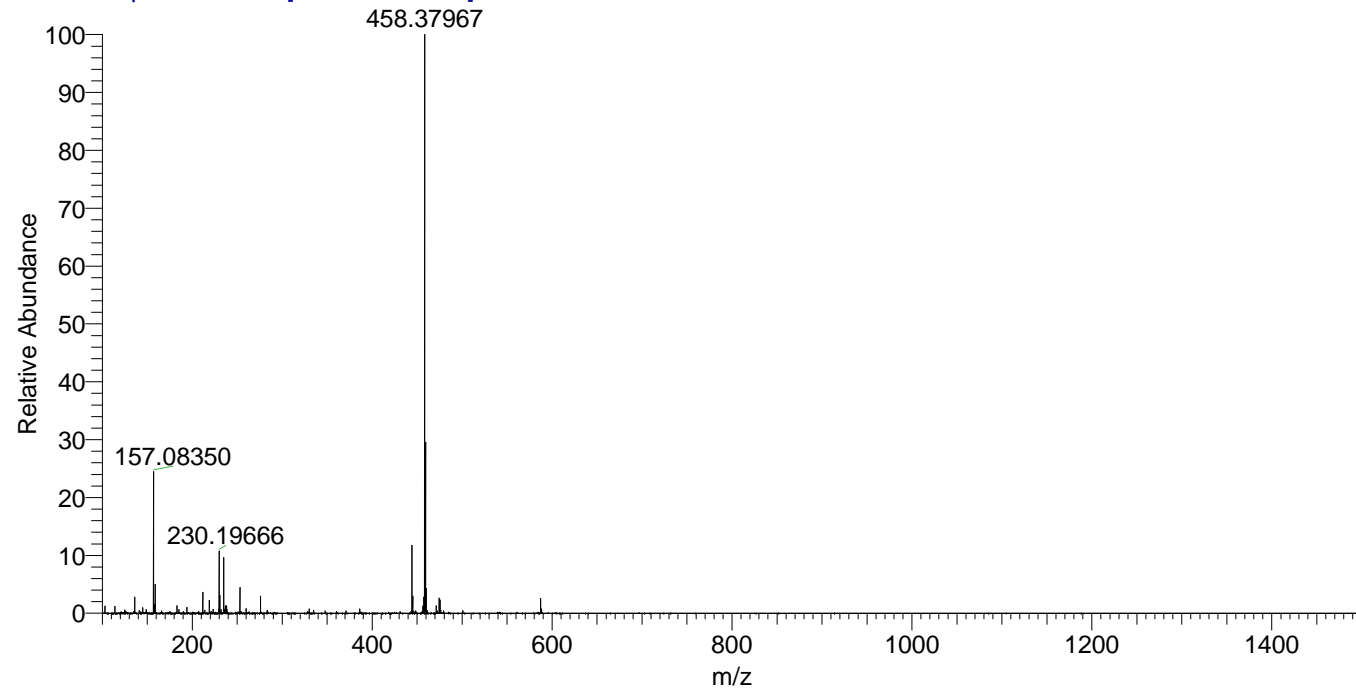
Hololenasp_HDX#833 RT: 5.29
 T: FTMS + p ESI Full ms [100.00-1500.00]
 m/z= 458.00000-459.00000

m/z	Intensity	Relative	Delta (ppm)	Composition
458.37967	91048984.0	100.00	-0.63	C ₂₃ H ₃₂ ² H ₉ O ₃ N ₆
			2.75	C ₂₃ H ₃₀ ² H ₁₀ O ₃ N ₆
			-4.00	C ₂₃ H ₃₄ ² H ₈ O ₃ N ₆



NL: 1.03E8
 Base Peak m/z=
 458.37822-458.38280 F: FTMS
 + p ESI Full ms
 [100.00-1500.00] MS
 Hololenasp_HDX

Hololenasp_HDX #833 RT: 5.29 AV: 1 NL: 8.78E7
 T: FTMS + p ESI Full ms [100.00-1500.00]



Hololenasp_HDX #833 RT: 5.29 AV: 1 NL: 8.78E7
 T: FTMS + p ESI Full ms [100.00-1500.00]

