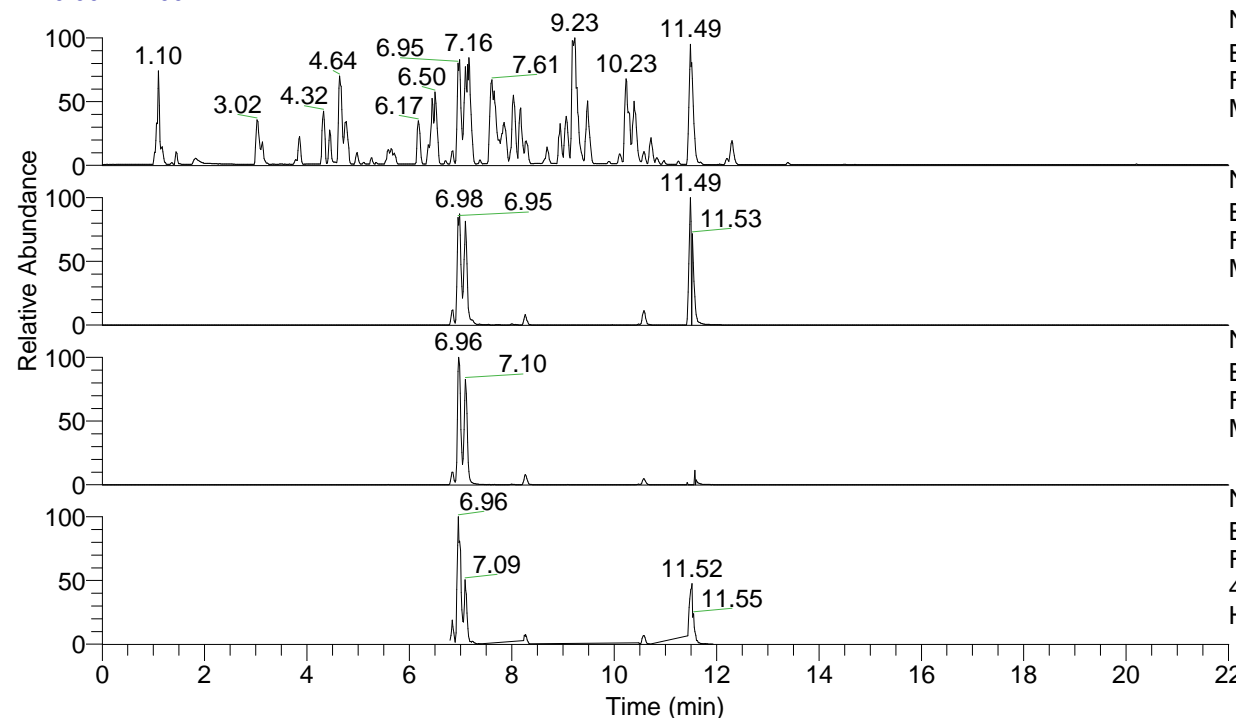


RT: 0.00 - 22.00



NL: 4.98E7
 Base Peak m/z= 100.00000-1500.00000 F:
 FTMS + p ESI Full ms [100.00-1500.00]
 MS Hololenasp

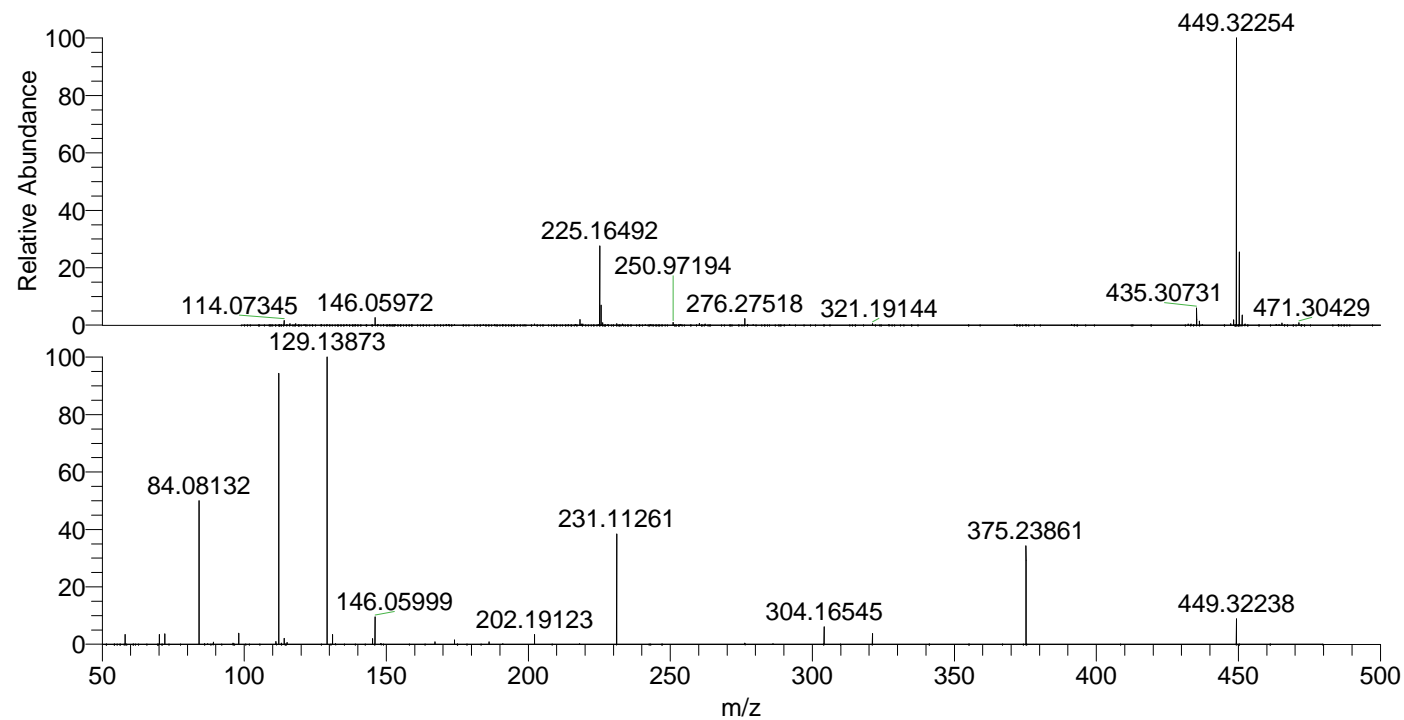
NL: 4.73E7
 Base Peak m/z= 449.32176-449.32626 F:
 FTMS + p ESI Full ms [100.00-1500.00]
 MS Hololenasp

NL: 1.23E7
 Base Peak m/z= 225.16479-225.16705 F:
 FTMS + p ESI Full ms [100.00-1500.00]
 MS Hololenasp

NL: 6.07E6
 Base Peak m/z= 50.00000-1500.00000 F:
 FTMS + p ESI d Full ms2
 449.32@hcd35.00 [50.00-475.00] MS
 Hololenasp

Hololenasp#2762-2798 RT: 6.93-7.01 AV: 7
 F: FTMS + p ESI d Full ms2 449.32@h ...
 m/z= 50.00000-1000.00000

m/z	Intensity	Relative
58.06591	132321.6	3.31
70.06580	126155.7	3.15
72.08148	144846.7	3.62
84.08132	1953934.9	48.84
89.10779	29248.5	0.73
98.09686	147074.3	3.68
111.10467	36763.5	0.92
112.11237	3668127.0	91.68
114.09162	82183.0	2.05
115.12323	22545.4	0.56
129.13873	4000864.3	100.00
131.11803	135762.9	3.39
145.13359	80692.1	2.02
146.06000	373219.9	9.33
167.15444	34963.9	0.87
174.05466	54369.7	1.36
186.19645	31728.3	0.79
202.19131	133507.7	3.34
231.11258	1509315.6	37.72
304.16537	247130.0	6.18
321.19176	144881.5	3.62
375.23861	1353330.9	33.83
449.32245	346864.3	8.67



NL: 4.04E7
 Hololenasp#2785 RT:
 6.98 AV: 1 T: FTMS + p
 ESI Full ms
 [100.00-1500.00]

NL: 4.19E6
 Hololenasp#2760-2797
 RT: 6.93-7.00 AV: 6 F:
 FTMS + p ESI d Full ms2
 449.32@hcd35.00
 [50.00-475.00]