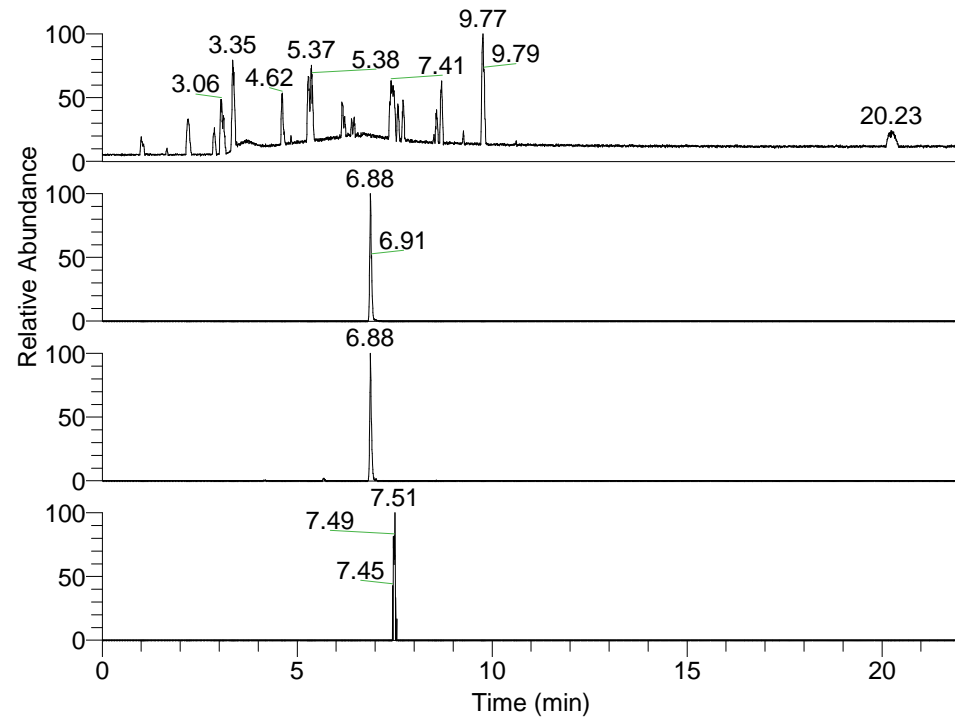


RT: 0.00 - 22.01



NL: 1.37E8
 Base Peak m/z=
 100.00000-1500.00000 F: FTMS + p
 ESI Full ms [100.00-1500.00] MS
 Hololenasp_HDX

NL: 4.04E6
 Base Peak m/z= 453.35788-453.36242
 F: FTMS + p ESI Full ms
 [100.00-1500.00] MS Hololenasp_HDX

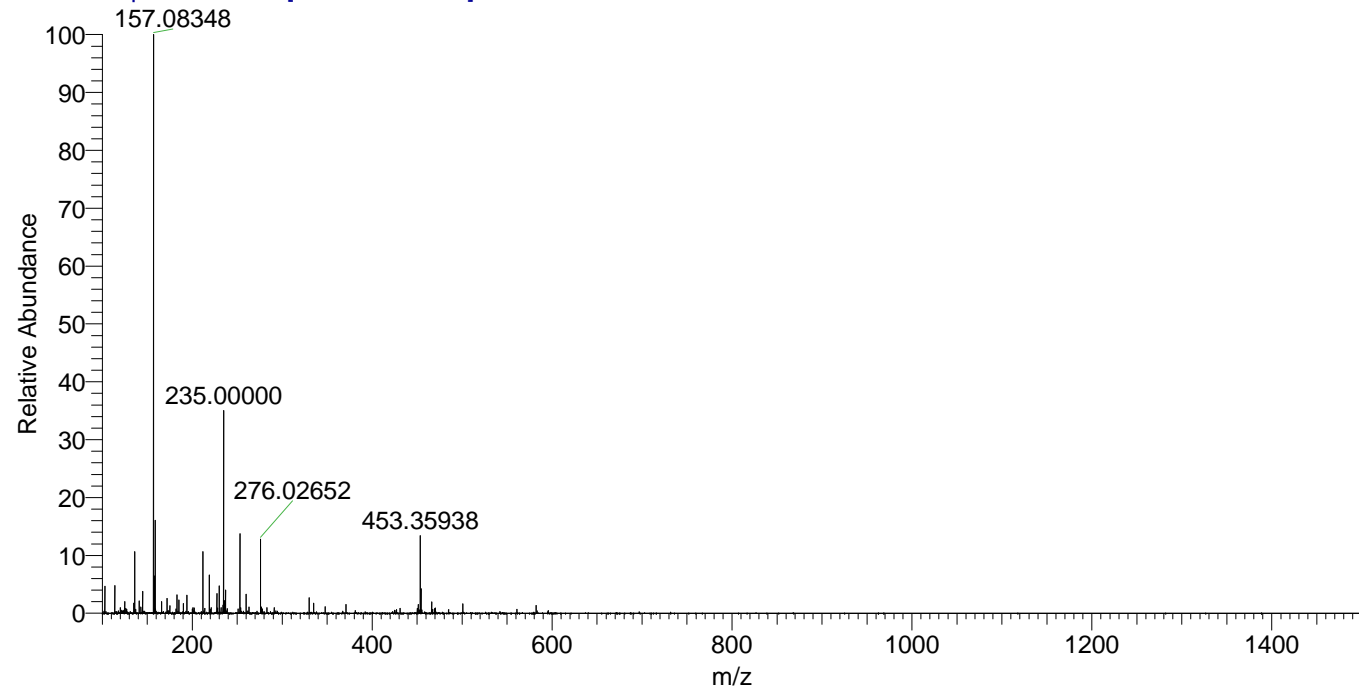
NL: 9.77E5
 Base Peak m/z= 227.68599-227.68827
 F: FTMS + p ESI Full ms
 [100.00-1500.00] MS Hololenasp_HDX

NL: 4.64E4
 Base Peak m/z= 568.35645-568.36213
 F: FTMS + p ESI Full ms
 [100.00-1500.00] MS Hololenasp_HDX

Hololenasp_HDX#1102 RT: 6.88
 T: FTMS + p ESI Full ms [100.00-1500.00]
 m/z= 453.00000-454.00000

| m/z | Intensity | Relative | Delta (ppm) | Composition |
|-----------|-----------|----------|-------------|---|
| 453.35938 | 4041766.3 | 100.00 | -0.50 | C ₂₄ H ₃₇ ² H ₅ O ₃ N ₅ |
| | | | 2.92 | C ₂₄ H ₃₅ ² H ₆ O ₃ N ₅ |
| | | | -3.91 | C ₂₄ H ₃₉ ² H ₄ O ₃ N ₅ |

Hololenasp_HDX #1102 RT: 6.88 AV: 1 NL: 2.84E7
 T: FTMS + p ESI Full ms [100.00-1500.00]



Hololenasp_HDX #1102 RT: 6.88 AV: 1 NL: 3.81E6
 T: FTMS + p ESI Full ms [100.00-1500.00]

