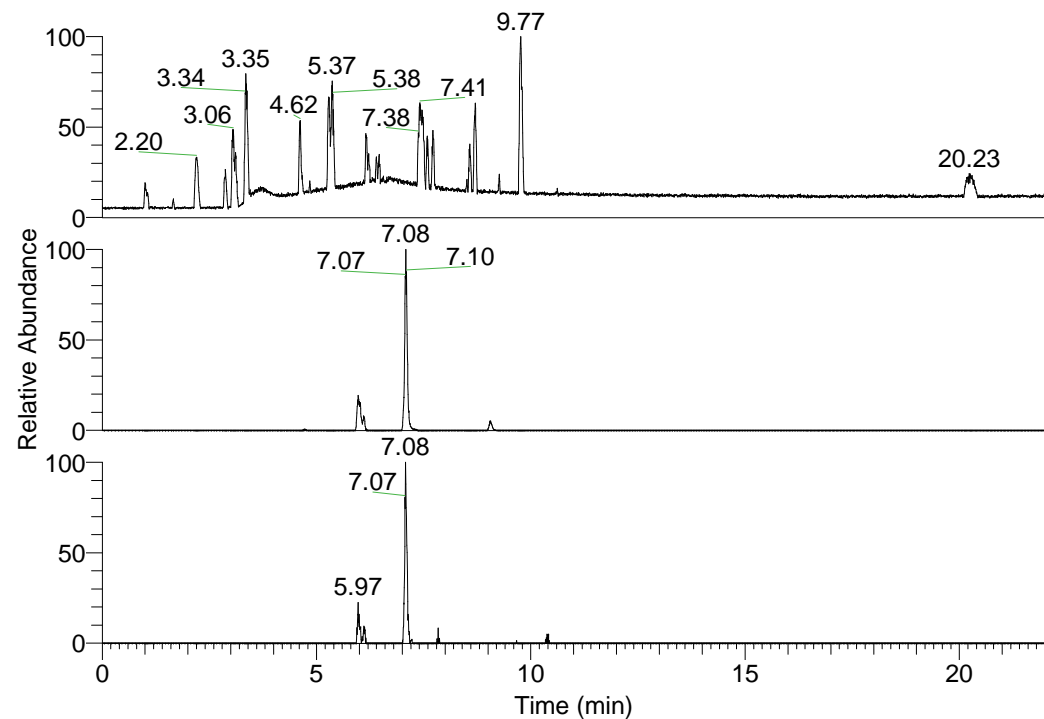


RT: 0.00 - 22.01



NL: 1.37E8
Base Peak m/z=
100.00000-1500.00000 F:
FTMS + p ESI Full ms
[100.00-1500.00] MS
Hololenasp_HDX

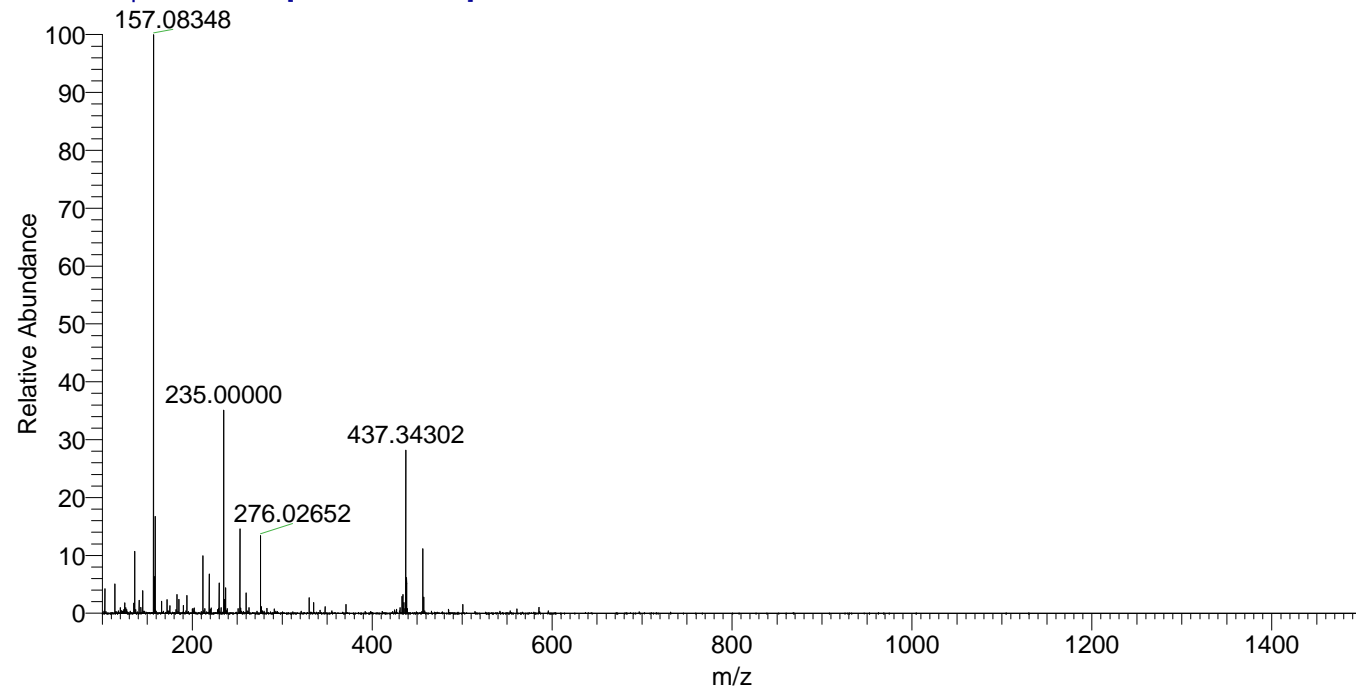
NL: 3.04E6
Base Peak m/z=
456.39896-456.40352 F: FTMS
+ p ESI Full ms
[100.00-1500.00] MS
Hololenasp_HDX

NL: 2.72E5
Base Peak m/z=
229.20652-229.20882 F: FTMS
+ p ESI Full ms
[100.00-1500.00] MS
Hololenasp_HDX

Hololenasp_HDX#1136 RT: 7.08
T: FTMS + p ESI Full ms [100.00-1500.00]

m/z	Intensity	Relative	Delta (ppm)	Composition
456.40036	3044605.3	100.00	-0.73	C ₂₄ H ₃₄ ² H ₉ O ₂ N ₆
			2.67	C ₂₄ H ₃₂ ² H ₁₀ O ₂ N ₆
			-4.12	C ₂₄ H ₃₆ ² H ₈ O ₂ N ₆

Hololenasp_HDX #1136 RT: 7.08 AV: 1 NL: 2.70E7
T: FTMS + p ESI Full ms [100.00-1500.00]



Hololenasp_HDX #1136 RT: 7.08 AV: 1 NL: 3.01E6
T: FTMS + p ESI Full ms [100.00-1500.00]

