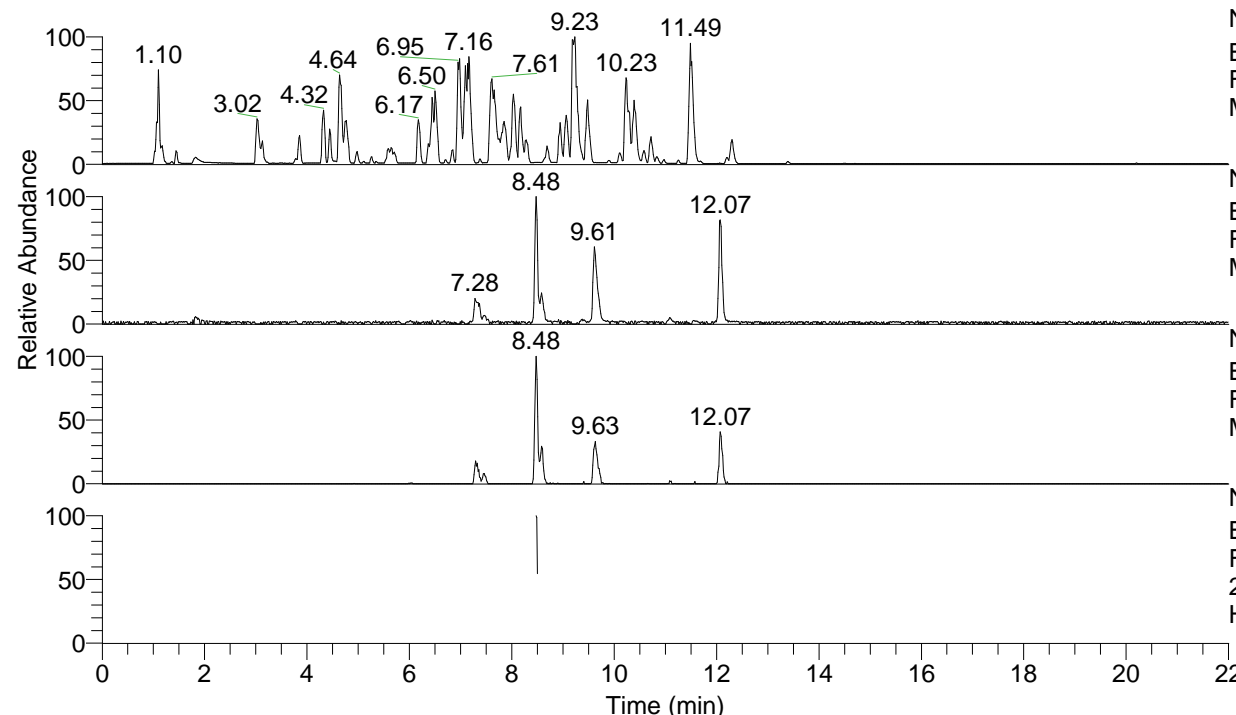


RT: 0.00 - 22.00



NL: 4.98E7
 Base Peak m/z= 100.00000-1500.00000 F:
 FTMS + p ESI Full ms [100.00-1500.00]
 MS Hololenasp

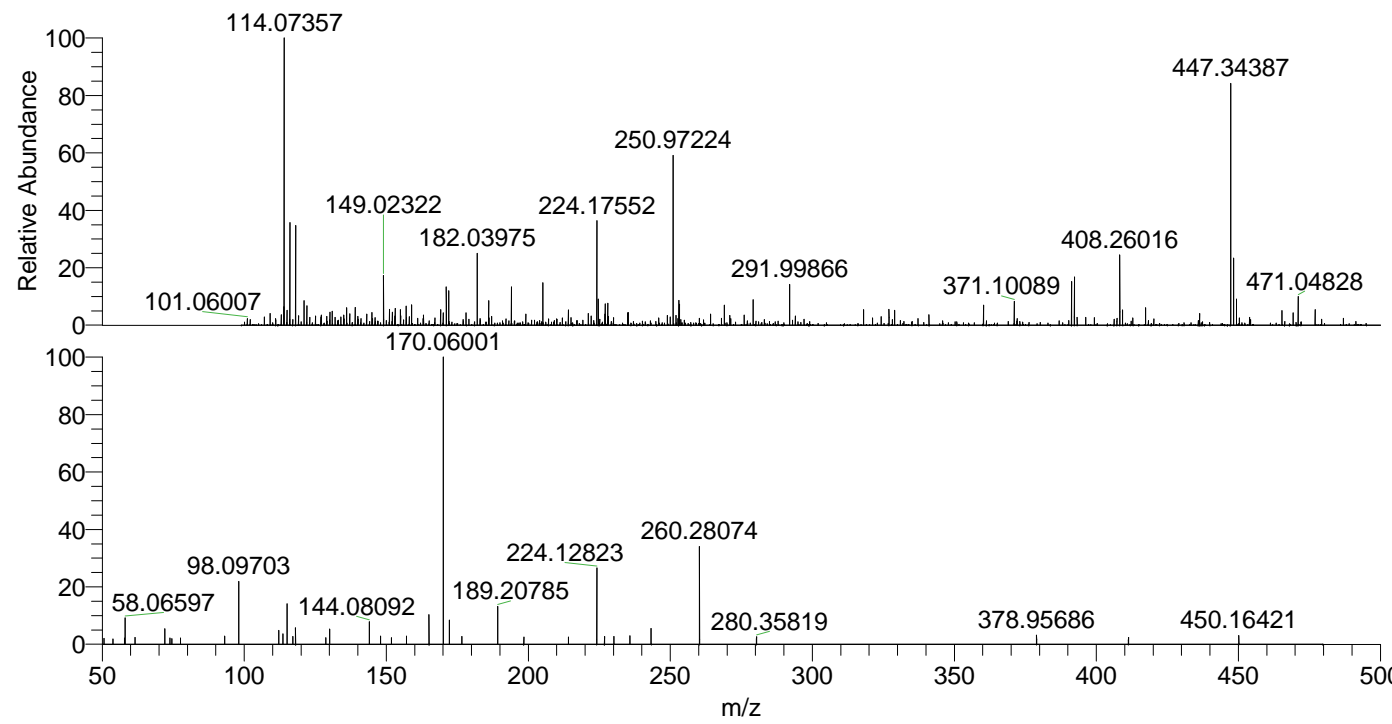
NL: 5.93E5
 Base Peak m/z= 447.34251-447.34699 F:
 FTMS + p ESI Full ms [100.00-1500.00]
 MS Hololenasp

NL: 2.61E5
 Base Peak m/z= 224.17517-224.17741 F:
 FTMS + p ESI Full ms [100.00-1500.00]
 MS Hololenasp

NL: 4.49E4
 Base Peak m/z= 50.00000-1500.00000 F:
 FTMS + p ESI d Full ms2
 224.18@hcd35.00 [50.00-475.00] MS
 Hololenasp

Hololenasp#3390-3402 RT: 8.47-8.50
 F: FTMS + p ESI d Full ms2 224.18 ...
 m/z= 50.00000-1000.00000

| m/z | Intensity | Relative |
|-----------|-----------|----------|
| 50.57716 | 722.0 | 2.03 |
| 53.82454 | 659.2 | 1.86 |
| 57.78697 | 777.9 | 2.19 |
| 58.06597 | 3279.8 | 9.24 |
| 61.53514 | 854.0 | 2.41 |
| 72.08155 | 1952.6 | 5.50 |
| 73.82641 | 806.2 | 2.27 |
| 74.49235 | 712.3 | 2.01 |
| 77.52209 | 797.1 | 2.25 |
| 93.07003 | 1024.6 | 2.89 |
| 98.09703 | 7934.9 | 22.35 |
| 112.11242 | 1752.8 | 4.94 |
| 113.61785 | 1285.1 | 3.62 |
| 115.12321 | 5081.4 | 14.31 |
| 117.06690 | 969.7 | 2.73 |
| 118.06567 | 2094.5 | 5.90 |
| 128.67644 | 829.2 | 2.34 |
| 130.06517 | 1899.1 | 5.35 |
| 144.08092 | 2867.5 | 8.08 |
| 147.97240 | 1026.0 | 2.89 |
| 151.82288 | 816.8 | 2.30 |
| 157.14278 | 1022.6 | 2.88 |
| 165.05471 | 3673.3 | 10.35 |
| 170.06001 | 35503.0 | 100.00 |
| 172.18049 | 3078.3 | 8.67 |
| 176.62357 | 985.5 | 2.78 |
| 189.20785 | 4776.7 | 13.45 |
| 198.43596 | 925.8 | 2.61 |
| 214.14737 | 894.0 | 2.52 |
| 224.12823 | 9570.5 | 26.96 |
| 226.83442 | 964.4 | 2.72 |
| 230.18329 | 970.1 | 2.73 |
| 235.75418 | 1030.3 | 2.90 |
| 243.25501 | 1982.1 | 5.58 |
| 260.28074 | 12168.5 | 34.27 |
| 280.35819 | 925.2 | 2.61 |
| 378.95686 | 1113.1 | 3.14 |
| 411.32110 | 849.8 | 2.39 |
| 450.16421 | 1068.8 | 3.01 |



NL: 7.04E5
 Hololenasp#3391 RT:
 8.48 AV: 1 T: FTMS + p
 ESI Full lock ms
 [100.00-1500.00]

NL: 3.54E4
 Hololenasp#3389-3402
 RT: 8.47-8.50 AV: 3 F:
 FTMS + p ESI d Full ms2
 224.18@hcd35.00
 [50.00-475.00]