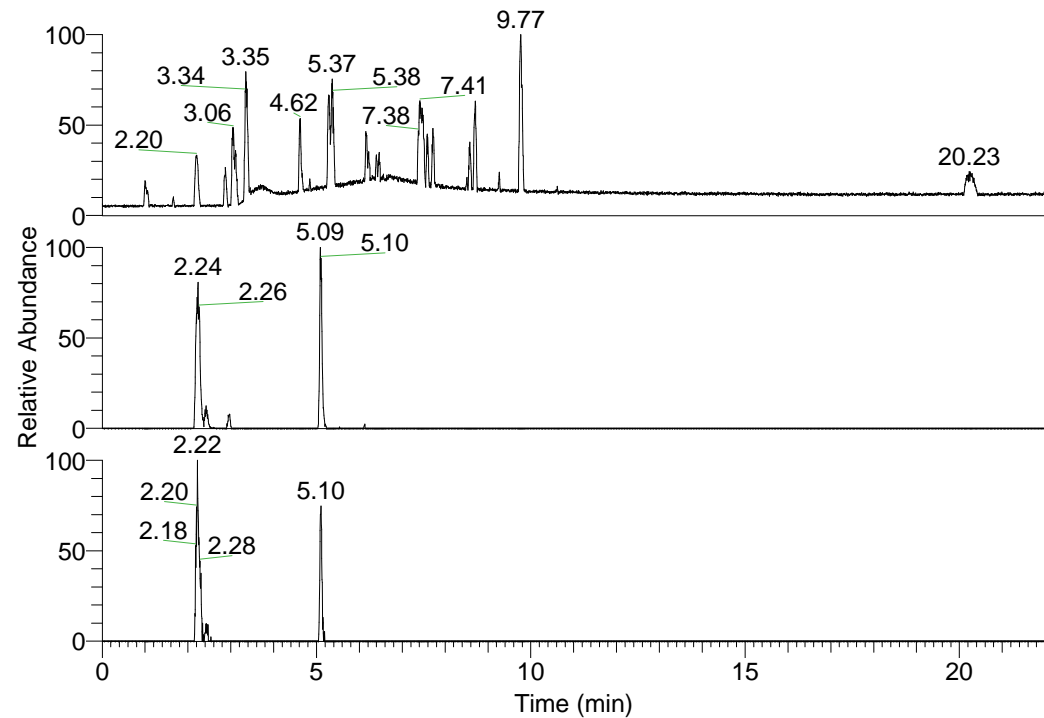


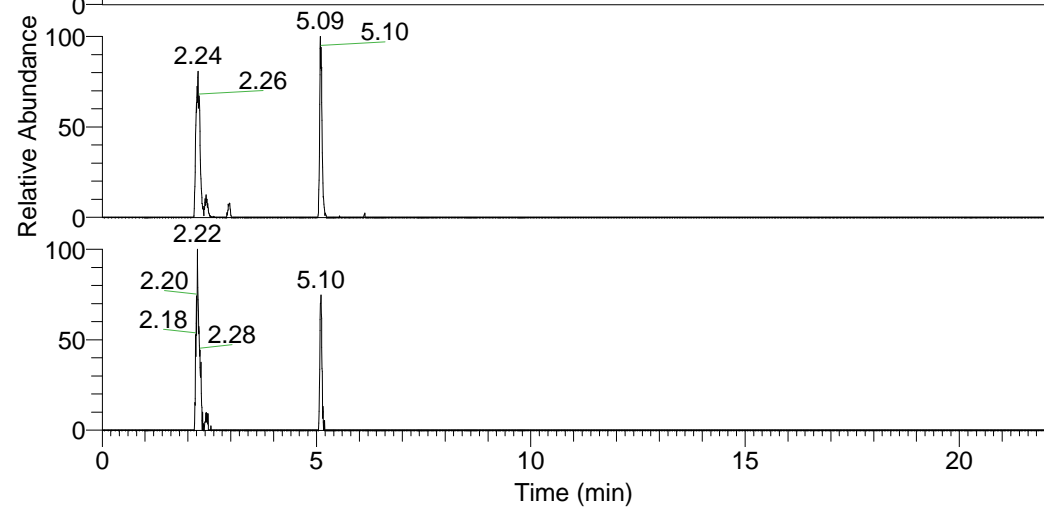
RT: 0.00 - 22.01



NL: 1.37E8
Base Peak m/z=
100.00000-1500.00000 F:
FTMS + p ESI Full ms
[100.00-1500.00] MS
Hololenasp_HDX

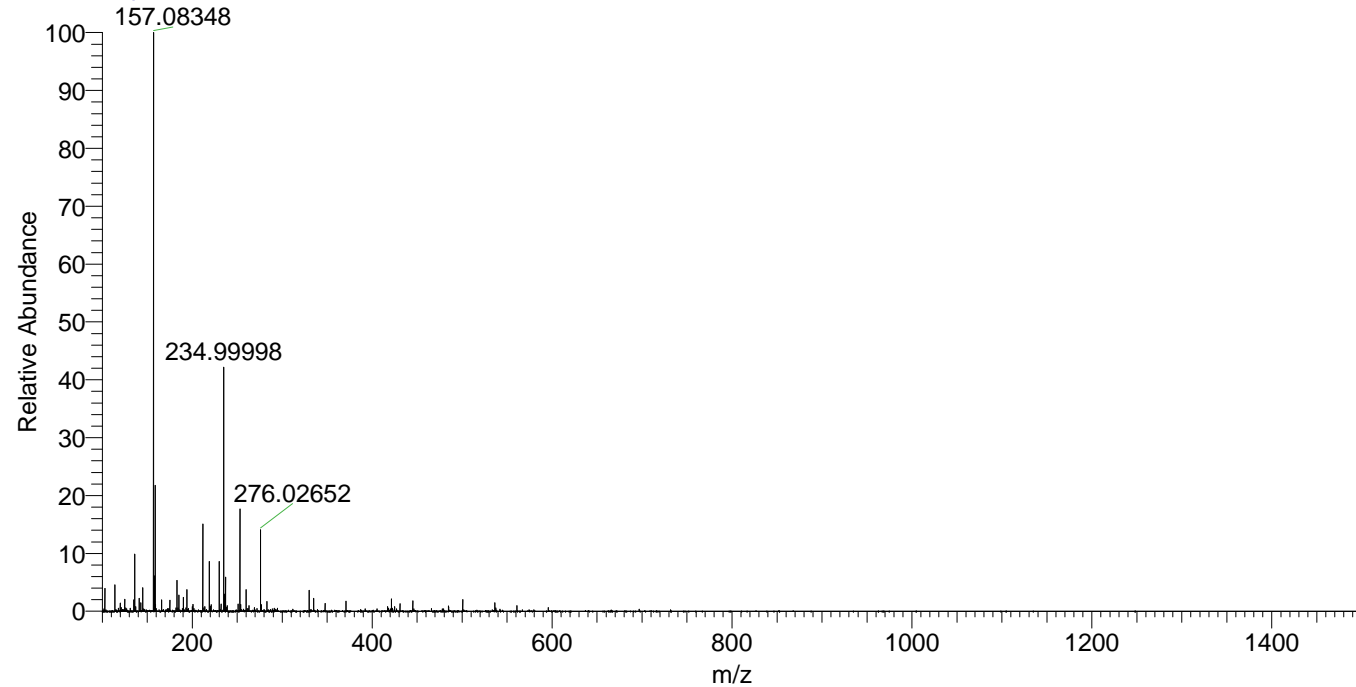
Hololenasp_HDX#800 RT: 5.09
T: FTMS + p ESI Full ms [100.00-1500.00]
m/z= 445.00000-446.00000

m/z	Intensity	Relative	Delta (ppm)	Composition
445.40979	401603.6	100.00	-0.62	C ₂₃ H ₃₇ ² H ₈ O ₂ N ₆
			2.86	C ₂₃ H ₃₅ ² H ₉ O ₂ N ₆
			-4.09	C ₂₃ H ₃₉ ² H ₇ O ₂ N ₆



NL: 4.02E5
Base Peak m/z=
445.40839-445.41285 F: FTMS
+ p ESI Full ms
[100.00-1500.00] MS
Hololenasp_HDX

Hololenasp_HDX #800 RT: 5.09 AV: 1 NL: 2.18E7
T: FTMS + p ESI Full ms [100.00-1500.00]



Hololenasp_HDX #800 RT: 5.09 AV: 1 NL: 3.96E5
T: FTMS + p ESI Full ms [100.00-1500.00]

