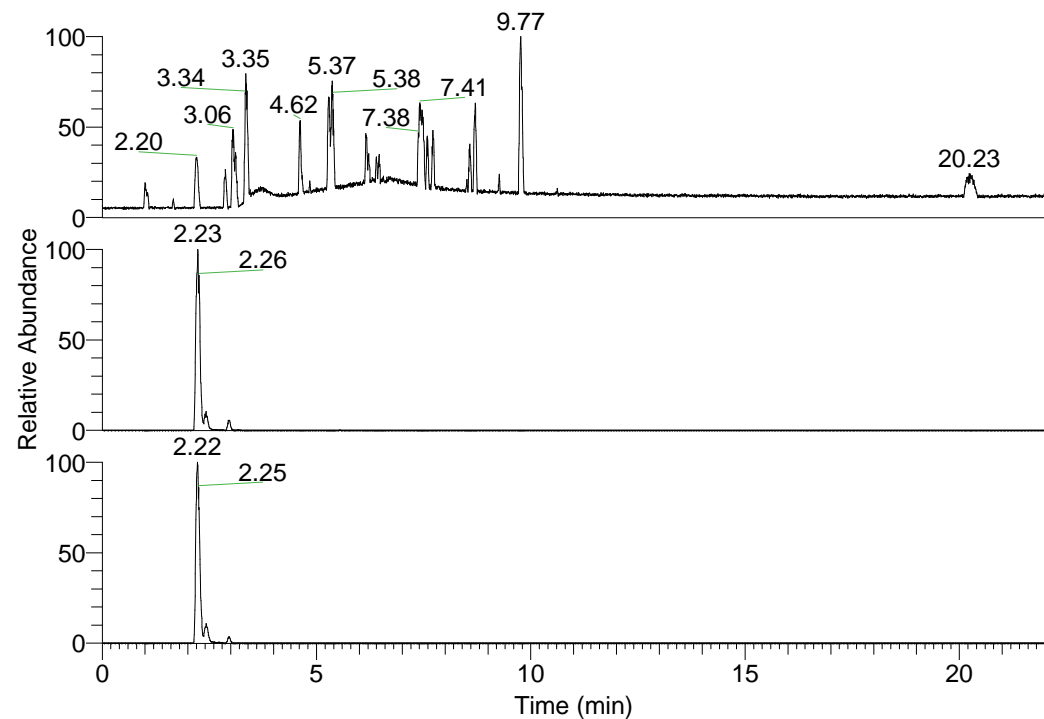


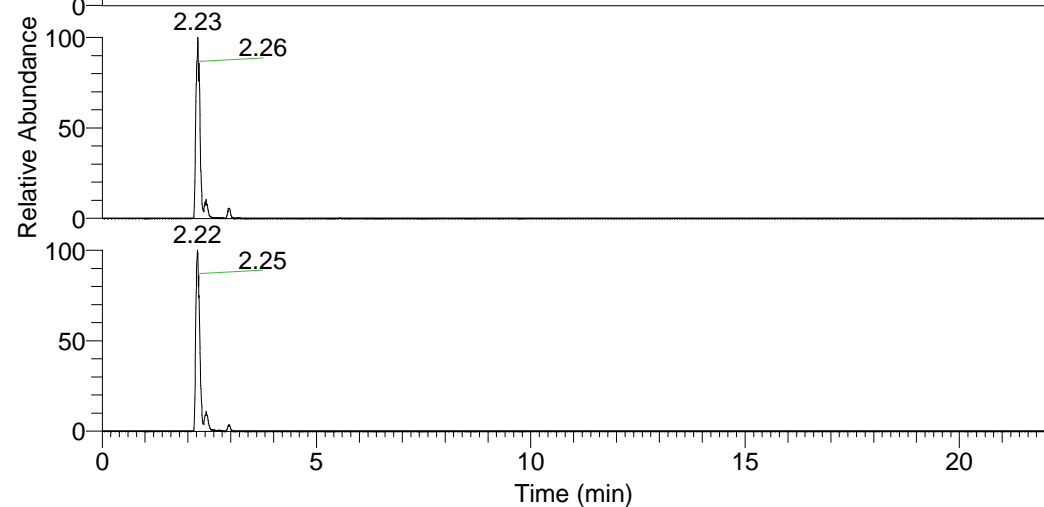
RT: 0.00 - 22.01



NL: 1.37E8  
Base Peak m/z=  
100.00000-1500.00000 F:  
FTMS + p ESI Full ms  
[100.00-1500.00] MS  
Hololenasp\_HDX

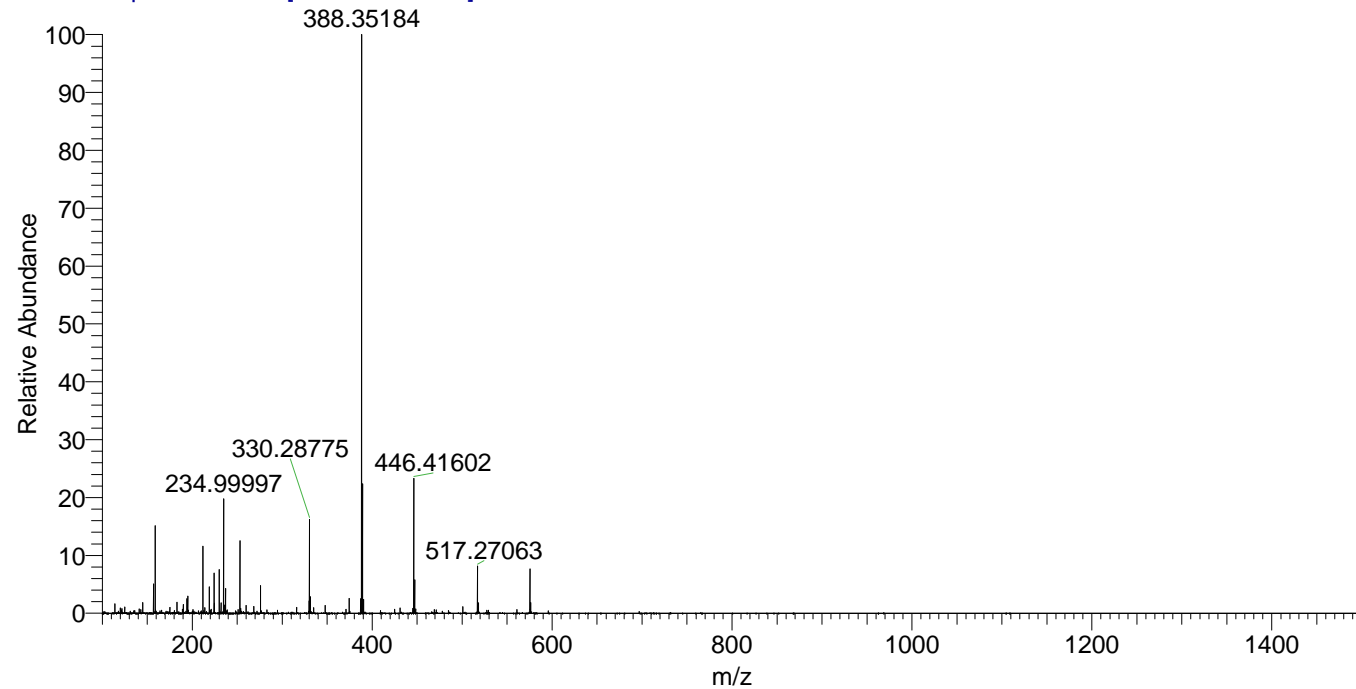
Hololenasp\_HDX#336 RT: 2.23  
T: FTMS + p ESI Full ms [100.00-1500.00]  
m/z= 446.00000-447.00000

m/z	Intensity	Relative	Delta (ppm)	Composition
446.41602	8842389.0	100.00	-0.73	C <sub>23</sub> H <sub>36</sub> <sup>2</sup> H <sub>9</sub> O <sub>2</sub> N <sub>6</sub>
			2.74	C <sub>23</sub> H <sub>34</sub> <sup>2</sup> H <sub>10</sub> O <sub>2</sub> N <sub>6</sub>
			-4.20	C <sub>23</sub> H <sub>38</sub> <sup>2</sup> H <sub>8</sub> O <sub>2</sub> N <sub>6</sub>



NL: 8.84E6  
Base Peak m/z=  
446.41466-446.41912 F: FTMS  
+ p ESI Full ms  
[100.00-1500.00] MS  
Hololenasp\_HDX

Hololenasp\_HDX #336 RT: 2.23 AV: 1 NL: 3.66E7  
T: FTMS + p ESI Full ms [100.00-1500.00]



Hololenasp\_HDX #336 RT: 2.23 AV: 1 NL: 8.54E6  
T: FTMS + p ESI Full ms [100.00-1500.00]

