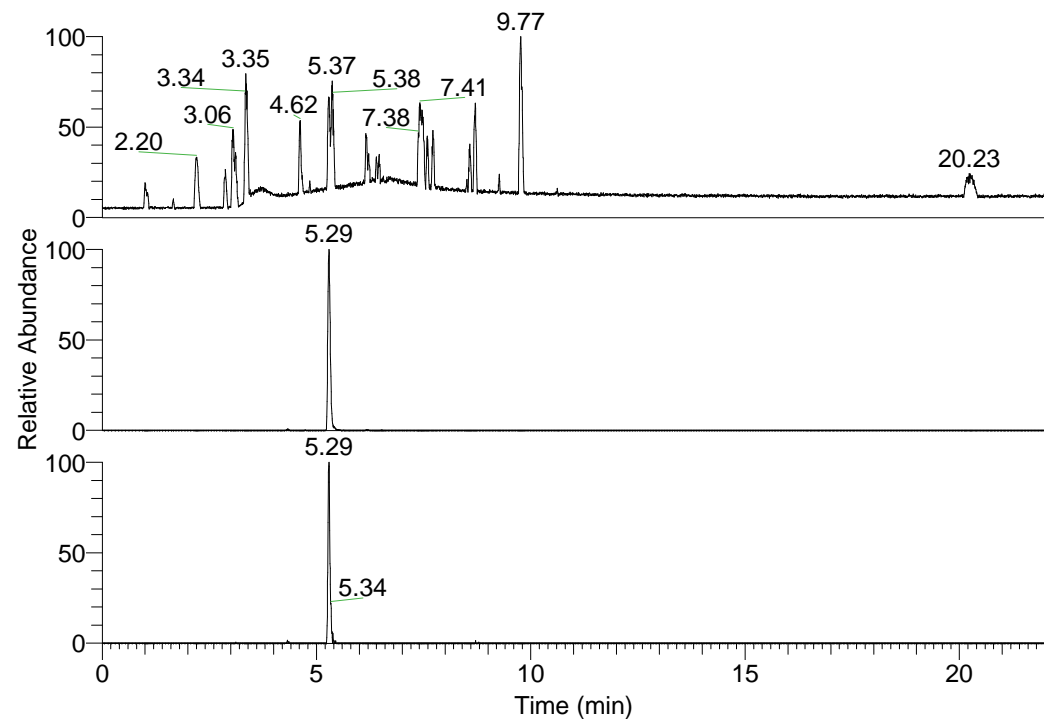


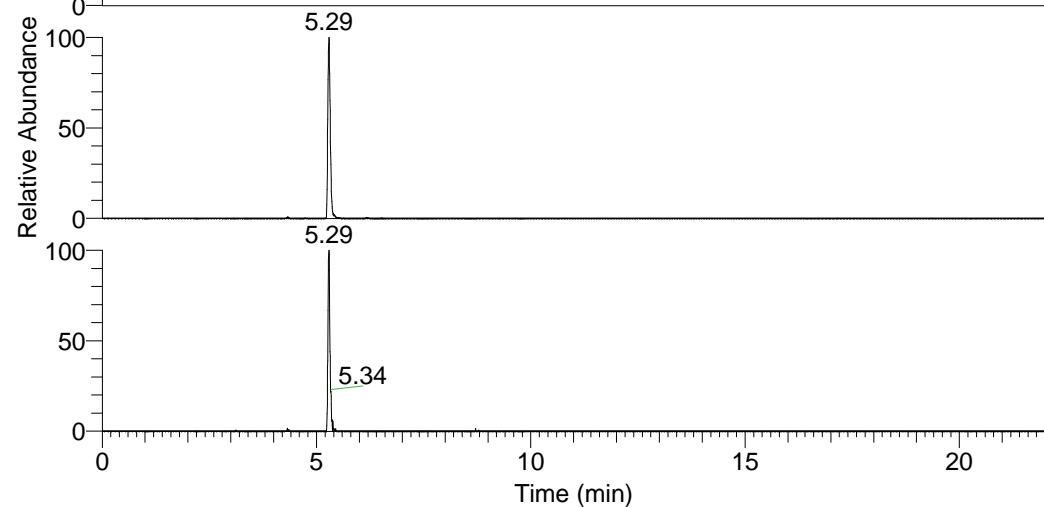
RT: 0.00 - 22.01



NL: 1.37E8  
Base Peak m/z=  
100.00000-1500.00000 F:  
FTMS + p ESI Full ms  
[100.00-1500.00] MS  
Hololenasp\_HDX

Hololenasp\_HDX#833 RT: 5.29  
T: FTMS + p ESI Full ms [100.00-1500.00]  
m/z= 444.00000-445.00000

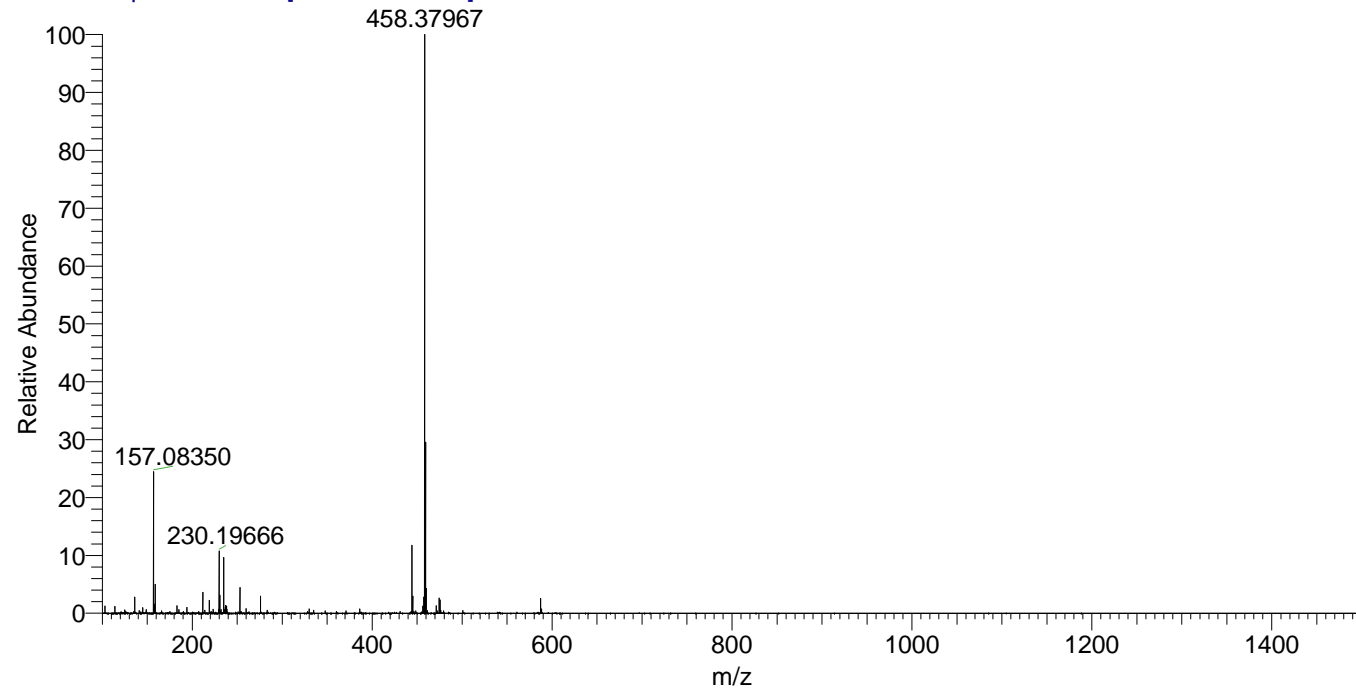
m/z	Intensity	Relative	Delta (ppm)	Composition
444.36435	10329292.0	100.00	0.10	C <sub>22</sub> H <sub>30</sub> <sup>2</sup> H <sub>9</sub> O <sub>3</sub> N <sub>6</sub>
			-3.39	C <sub>22</sub> H <sub>32</sub> <sup>2</sup> H <sub>8</sub> O <sub>3</sub> N <sub>6</sub>
			3.58	C <sub>22</sub> H <sub>28</sub> <sup>2</sup> H <sub>10</sub> O <sub>3</sub> N <sub>6</sub>



NL: 1.03E7  
Base Peak m/z=  
444.36264-444.36708 F: FTMS  
+ p ESI Full ms  
[100.00-1500.00] MS  
Hololenasp\_HDX

NL: 6.25E5  
Base Peak m/z=  
223.18836-223.19060 F: FTMS  
+ p ESI Full ms  
[100.00-1500.00] MS  
Hololenasp\_HDX

Hololenasp\_HDX #833 RT: 5.29 AV: 1 NL: 8.78E7  
T: FTMS + p ESI Full ms [100.00-1500.00]



Hololenasp\_HDX #833 RT: 5.29 AV: 1 NL: 1.03E7  
T: FTMS + p ESI Full ms [100.00-1500.00]

