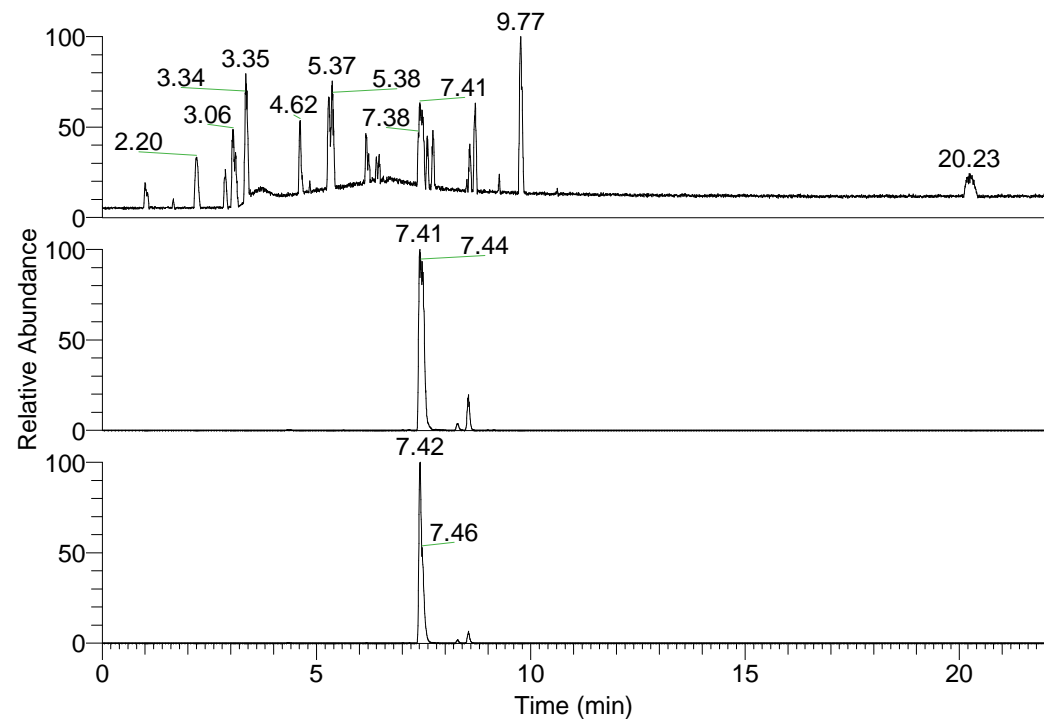


RT: 0.00 - 22.01



NL: 1.37E8
 Base Peak m/z=
 100.00000-1500.00000 F:
 FTMS + p ESI Full ms
 [100.00-1500.00] MS
 Hololenasp_HDX

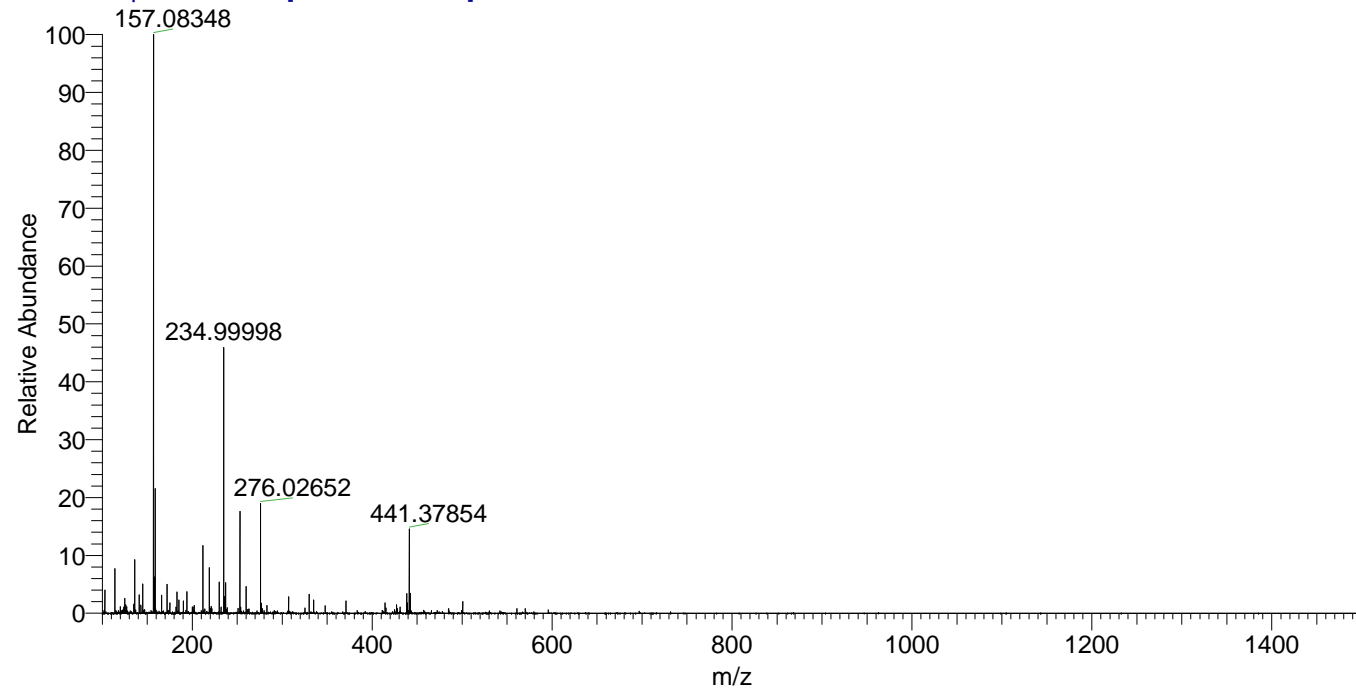
NL: 8.70E7
 Base Peak m/z=
 441.37711-441.38153 F: FTMS
 + p ESI Full ms
 [100.00-1500.00] MS
 Hololenasp_HDX

NL: 9.81E6
 Base Peak m/z=
 221.69560-221.69782 F: FTMS
 + p ESI Full ms
 [100.00-1500.00] MS
 Hololenasp_HDX

Hololenasp_HDX#1341 RT: 8.30
 T: FTMS + p ESI Full ms [100.00-1500.00]
 m/z = 441.00000-442.00000

m/z	Intensity	Relative	Delta (ppm)	Composition
441.37854	3256105.3	100.00	-0.51	C ₂₃ H ₃₃ ² H ₈ O ₂ N ₆
			3.00	C ₂₃ H ₃₁ ² H ₉ O ₂ N ₆
			-4.02	C ₂₃ H ₃₅ ² H ₇ O ₂ N ₆

Hololenasp_HDX #1341 RT: 8.30 AV: 1 NL: 2.23E7
 T: FTMS + p ESI Full ms [100.00-1500.00]



Hololenasp_HDX #1341 RT: 8.30 AV: 1 NL: 3.25E6
 T: FTMS + p ESI Full ms [100.00-1500.00]

