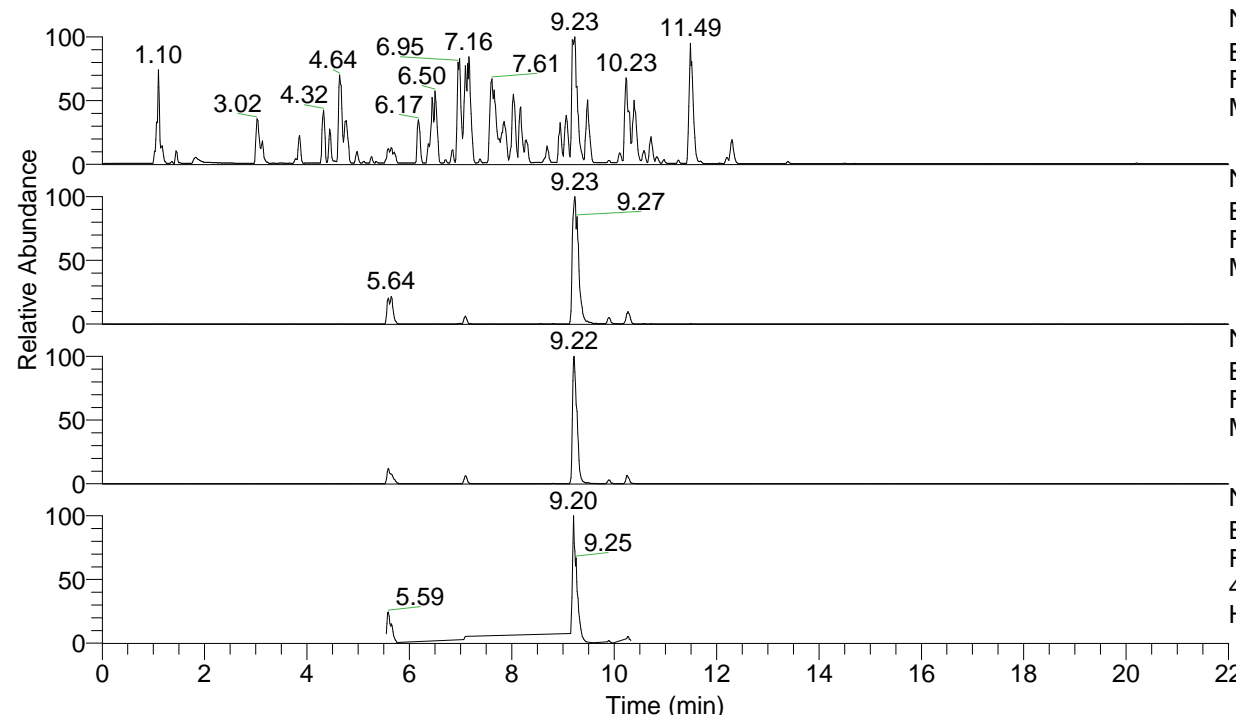


RT: 0.00 - 22.00



NL: 4.98E7
 Base Peak m/z= 100.00000-1500.00000 F:
 FTMS + p ESI Full ms [100.00-1500.00]
 MS Hololenasp

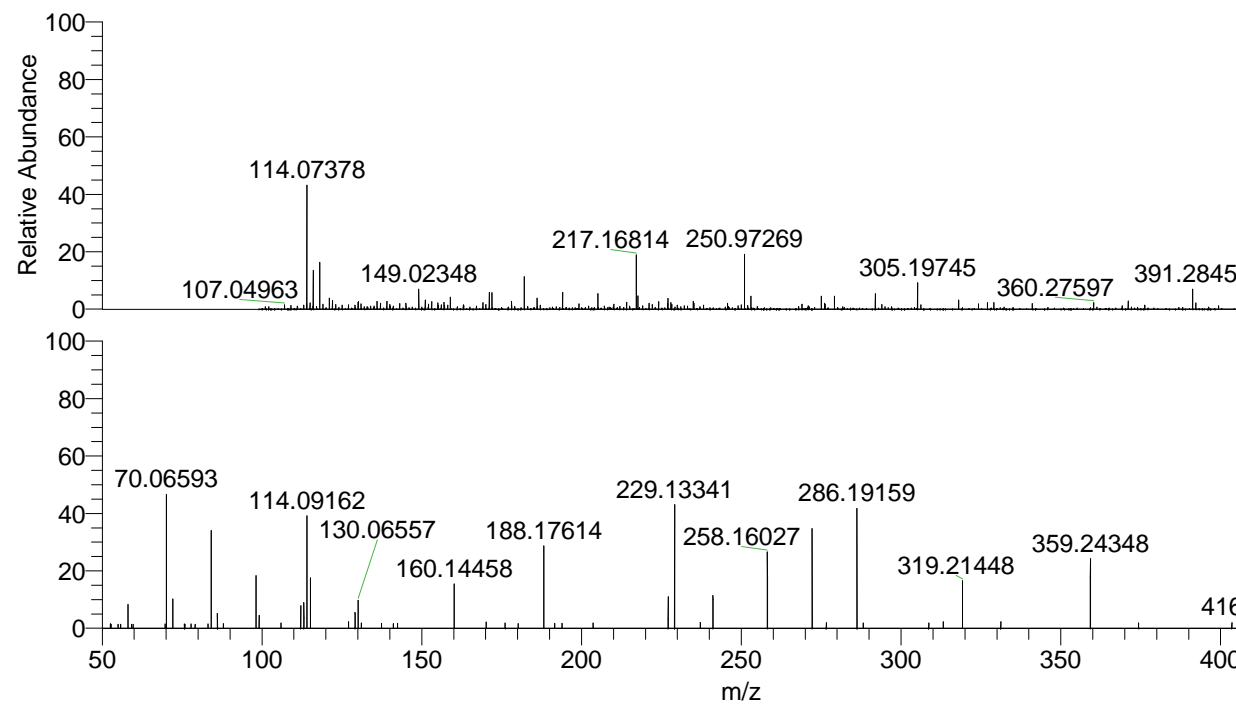
NL: 3.05E7
 Base Peak m/z= 433.32693-433.33127 F:
 FTMS + p ESI Full ms [100.00-1500.00]
 MS Hololenasp

NL: 9.92E6
 Base Peak m/z= 217.16737-217.16955 F:
 FTMS + p ESI Full ms [100.00-1500.00]
 MS Hololenasp

NL: 4.35E6
 Base Peak m/z= 50.00000-1500.00000 F:
 FTMS + p ESI d Full ms2
 433.33@hcd35.00 [50.00-460.00] MS
 Hololenasp

Hololenasp#3957-3974 RT: 9.88-9.92
 F: FTMS + p ESI d Full ms2 433.33 ...
 m/z= 50.00000-1000.00000

m/z	Intensity	Relative
52.66979	895.5	1.30
58.06595	6564.8	9.56
68.32117	918.0	1.34
69.64009	888.6	1.29
70.06590	32504.2	47.35
72.08156	8042.7	11.72
75.74294	858.7	1.25
83.10189	856.0	1.25
84.08132	25208.5	36.72
86.06076	4361.0	6.35
87.88699	953.2	1.39
98.09697	13718.3	19.98
99.09231	2620.2	3.82
105.99041	1042.7	1.52
112.11249	5972.6	8.70
112.12670	903.3	1.32
113.10787	5218.4	7.60
114.09163	26252.5	38.24
115.12357	13570.4	19.77
127.12317	2736.2	3.99
129.13880	3164.6	4.61
130.06548	7611.0	11.09
131.11822	1034.3	1.51
137.37044	1008.0	1.47
141.14013	914.2	1.33
142.44304	1043.2	1.52
160.14458	8787.0	12.80
170.16454	1273.9	1.86
176.10842	1022.1	1.49
180.21387	953.5	1.39
188.17617	18378.9	26.77
191.59354	987.1	1.44
193.91658	1030.2	1.50
203.62326	1036.5	1.51
227.11758	7874.4	11.47
229.13331	30076.9	43.81
237.15266	1145.0	1.67
241.13428	8932.1	13.01
258.16044	17664.3	25.73
272.17615	25843.0	37.65
276.61655	1110.4	1.62
286.19154	28035.5	40.84
288.16886	1025.1	1.49
308.67416	1053.1	1.53
313.20291	1282.6	1.87
319.21422	11467.6	16.71
331.21140	1323.7	1.93
359.24350	17819.4	25.96
374.33376	1054.7	1.54
403.52965	1128.7	1.64
416.29842	1202.8	1.75
421.86624	1241.3	1.81
429.62889	1232.1	1.79
433.32814	68645.9	100.00
452.94328	1189.3	1.73



NL: 1.54E6
 Hololenasp#3961 RT:
 9.89 AV: 1 T: FTMS + p
 ESI Full lock ms
 [100.00-1500.00]

NL: 7.62E4
 Hololenasp#3955-3968
 RT: 9.88-9.91 AV: 3 F:
 FTMS + p ESI d Full ms2
 433.33@hcd35.00
 [50.00-460.00]