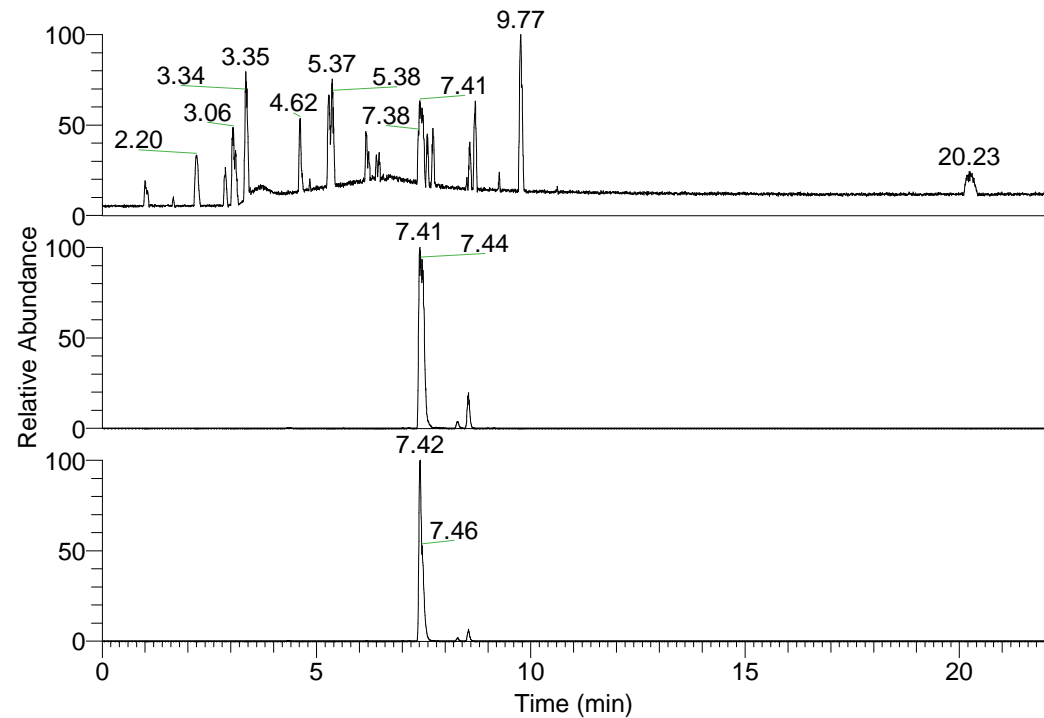


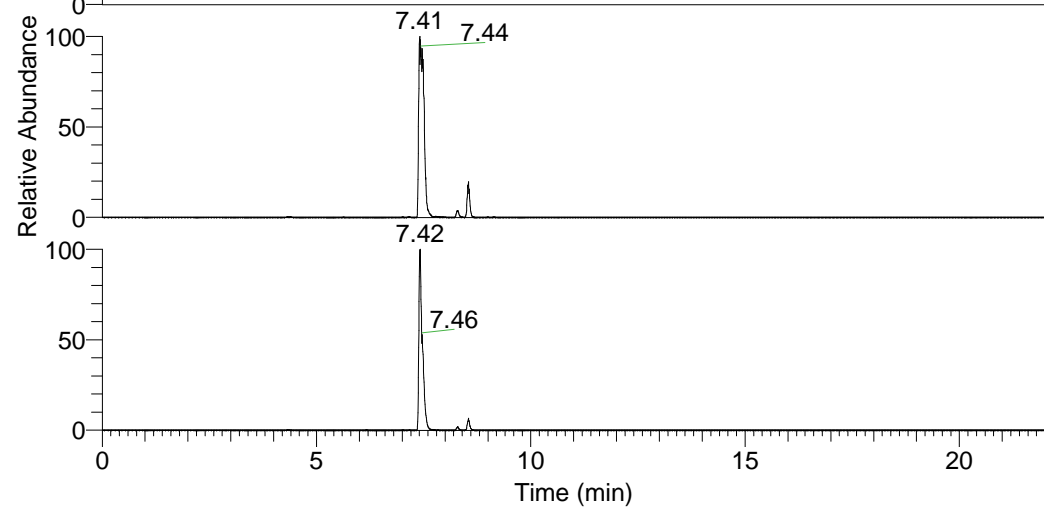
RT: 0.00 - 22.01



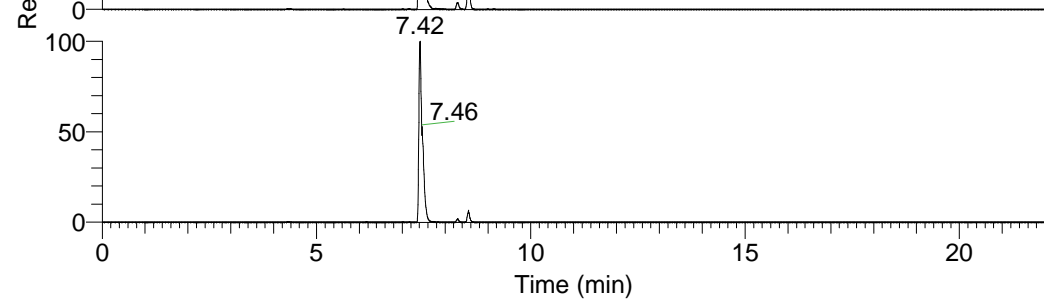
NL: 1.37E8  
Base Peak m/z=  
100.00000-1500.00000 F:  
FTMS + p ESI Full ms  
[100.00-1500.00] MS  
Hololenasp\_HDX

Hololenasp\_HDX#1191 RT: 7.41  
T: FTMS + p ESI Full ms [100.00-1500.00]  
m/z = 441.00000-442.00000

m/z	Intensity	Relative	Delta (ppm)	Composition
441.37851	86966072.0	100.00	-0.58	C <sub>23</sub> H <sub>33</sub> <sup>2</sup> H <sub>8</sub> O <sub>2</sub> N <sub>6</sub>
			2.93	C <sub>23</sub> H <sub>31</sub> <sup>2</sup> H <sub>9</sub> O <sub>2</sub> N <sub>6</sub>
			-4.09	C <sub>23</sub> H <sub>35</sub> <sup>2</sup> H <sub>7</sub> O <sub>2</sub> N <sub>6</sub>

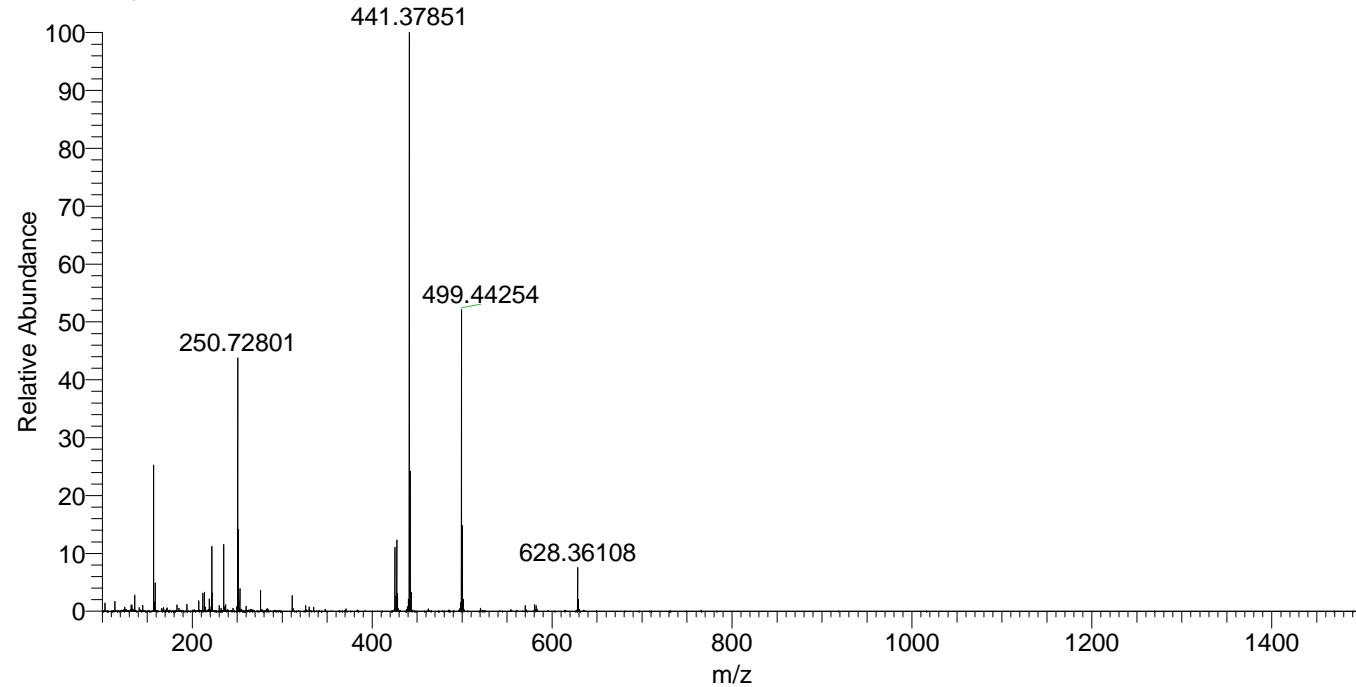


NL: 8.70E7  
Base Peak m/z=  
441.37711-441.38153 F: FTMS  
+ p ESI Full ms  
[100.00-1500.00] MS  
Hololenasp\_HDX



NL: 9.81E6  
Base Peak m/z=  
221.69560-221.69782 F: FTMS  
+ p ESI Full ms  
[100.00-1500.00] MS  
Hololenasp\_HDX

Hololenasp\_HDX #1191 RT: 7.41 AV: 1 NL: 8.67E7  
T: FTMS + p ESI Full ms [100.00-1500.00]



Hololenasp\_HDX #1191 RT: 7.41 AV: 1 NL: 8.67E7  
T: FTMS + p ESI Full ms [100.00-1500.00]

