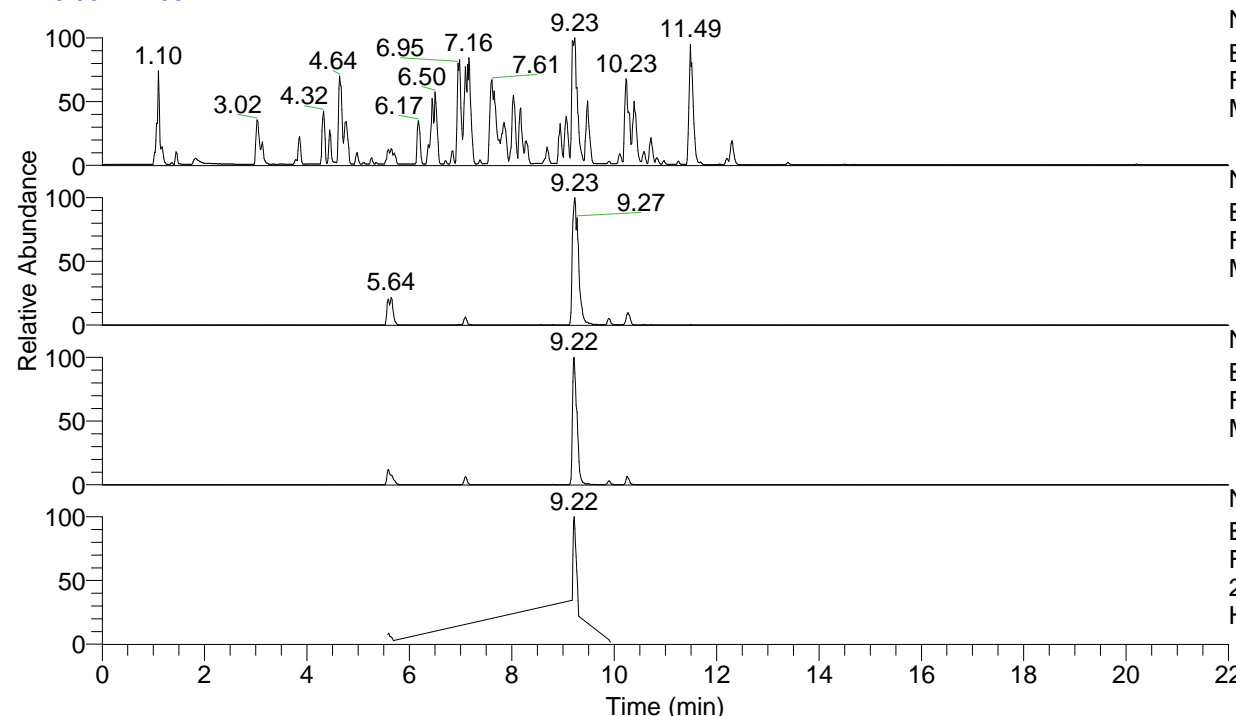


RT: 0.00 - 22.00



NL: 4.98E7
 Base Peak m/z= 100.00000-1500.00000 F:
 FTMS + p ESI Full ms [100.00-1500.00]
 MS Hololenasp

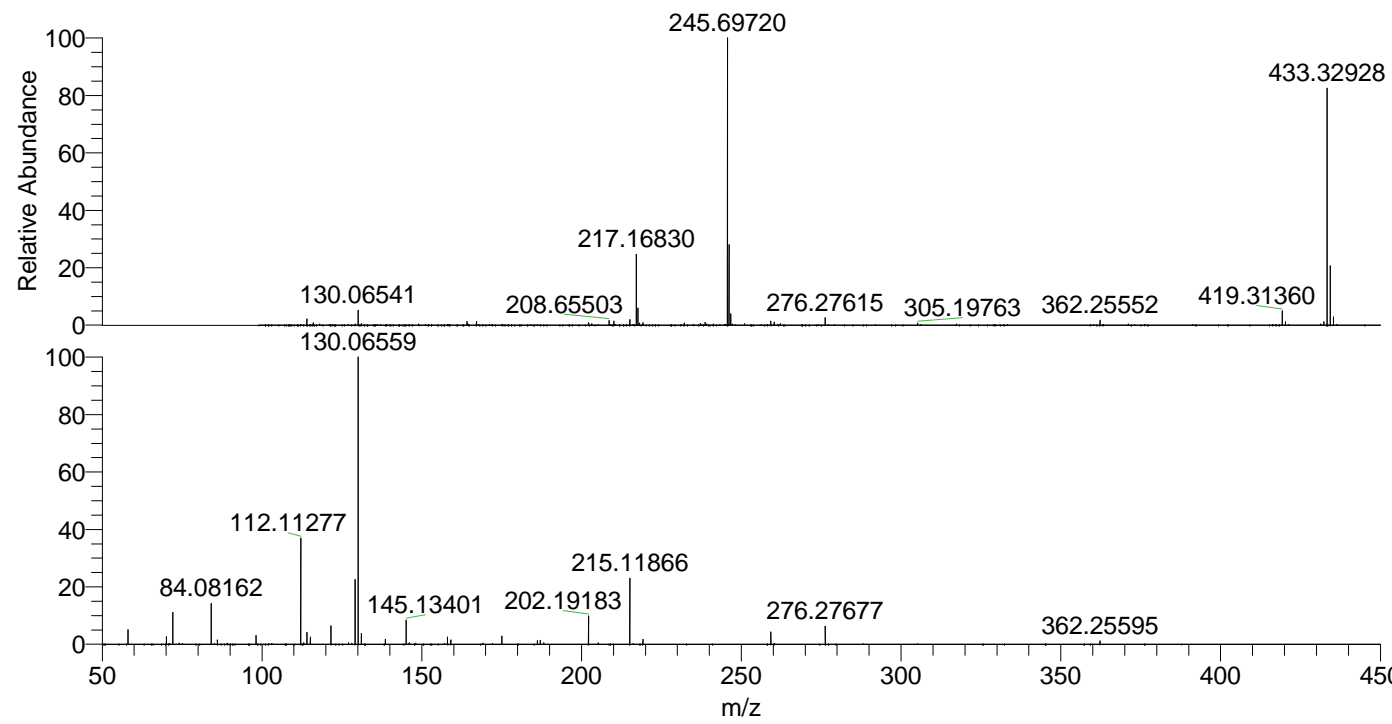
NL: 3.05E7
 Base Peak m/z= 433.32693-433.33127 F:
 FTMS + p ESI Full ms [100.00-1500.00]
 MS Hololenasp

NL: 9.92E6
 Base Peak m/z= 217.16737-217.16955 F:
 FTMS + p ESI Full ms [100.00-1500.00]
 MS Hololenasp

NL: 2.74E6
 Base Peak m/z= 50.00000-1500.00000 F:
 FTMS + p ESI d Full ms2
 217.17@hcd35.00 [50.00-460.00] MS
 Hololenasp

Hololenasp#3671-3713 RT: 9.18-9.27 AV: 8
 F: FTMS + p ESI d Full ms2 217.17@h ...
 m/z= 50.00000-1000.00000

m/z	Intensity	Relative
58.06613	90220.1	4.78
70.06606	47593.7	2.52
72.08169	242184.3	12.82
84.08162	257349.6	13.63
86.06080	25787.8	1.37
98.09712	63043.5	3.34
112.11277	672171.4	35.59
114.09196	78124.4	4.14
115.12368	48987.3	2.59
121.61553	120327.0	6.37
129.13914	410914.9	21.76
130.06559	1888432.9	100.00
130.12861	90137.1	4.77
131.06892	9574.3	0.51
131.11834	71068.8	3.76
138.64180	30211.3	1.60
145.13400	148503.7	7.86
158.06038	44883.0	2.38
159.09224	26485.7	1.40
169.17008	10225.9	0.54
175.06340	51703.3	2.74
186.19730	24557.0	1.30
187.08705	21921.4	1.16
188.17640	13044.5	0.69
202.19183	174019.6	9.22
205.20288	11786.4	0.62
215.11866	424206.3	22.46
219.21890	31970.4	1.69
259.25004	98058.8	5.19
276.27671	122384.0	6.48
362.25595	28147.9	1.49



NL: 3.53E7
 Hololenasp#3697 RT:
 9.23 AV: 1 T: FTMS + p
 ESI Full ms
 [100.00-1500.00]

NL: 2.07E6
 Hololenasp#3673-3711
 RT: 9.19-9.26 AV: 6 F:
 FTMS + p ESI d Full ms2
 217.17@hcd35.00
 [50.00-460.00]