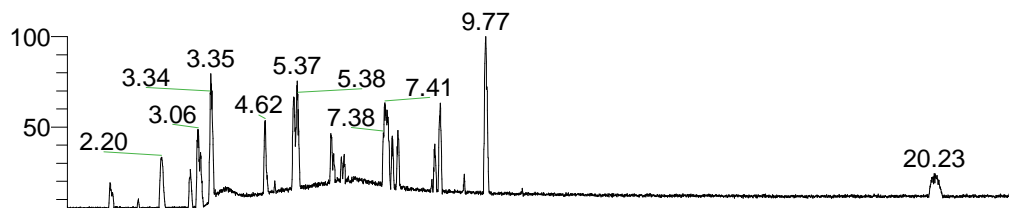


RT: 0.00 - 22.01



NL: 1.37E8  
 Base Peak m/z=  
 100.00000-1500.00000 F:  
 FTMS + p ESI Full ms  
 [100.00-1500.00] MS  
 Hololenasp\_HDX

Hololenasp\_HDX#891 RT: 5.63  
 T: FTMS + p ESI Full ms [100.00-1500.00]  
 m/z= 442.00000-443.00000

m/z	Intensity	Relative	Delta (ppm)	Composition
442.38483	3103472.5	100.00	-0.49	C <sub>23</sub> H <sub>32</sub> <sup>2</sup> H <sub>9</sub> O <sub>2</sub> N <sub>6</sub>
			3.01	C <sub>23</sub> H <sub>30</sub> <sup>2</sup> H <sub>10</sub> O <sub>2</sub> N <sub>6</sub>
			-3.99	C <sub>23</sub> H <sub>34</sub> <sup>2</sup> H <sub>8</sub> O <sub>2</sub> N <sub>6</sub>

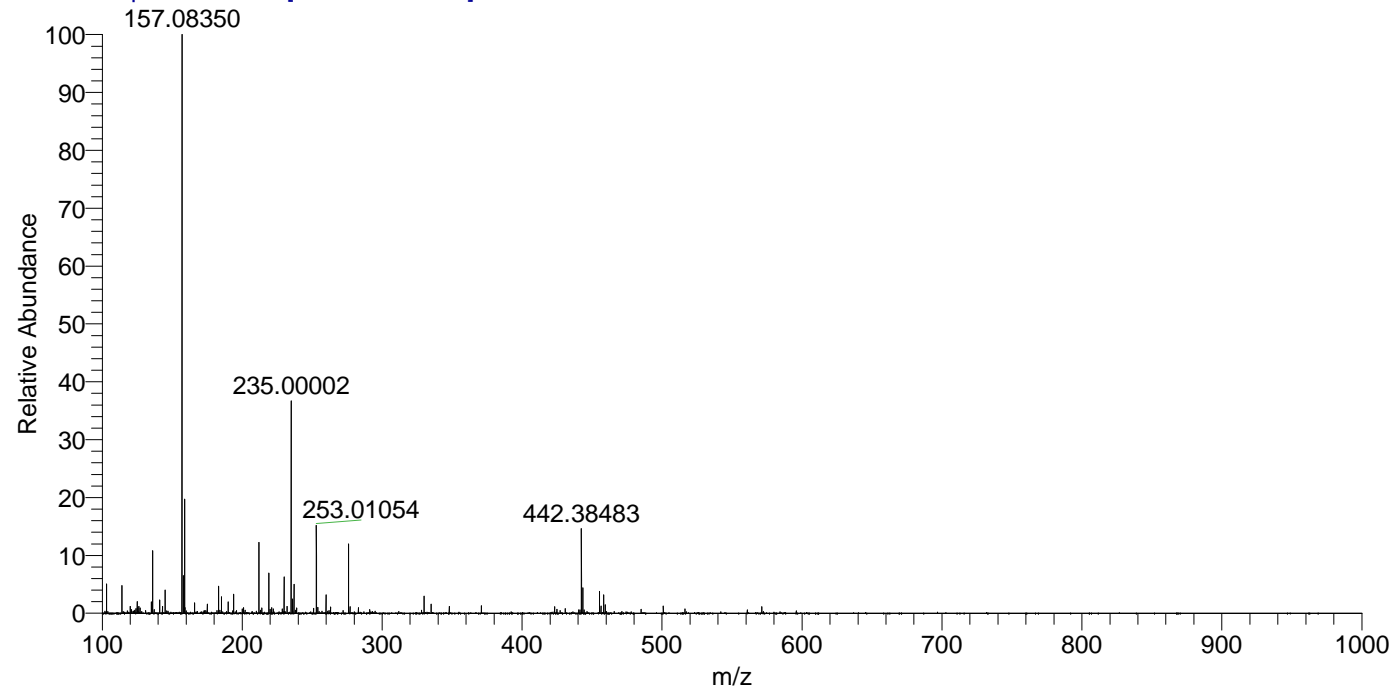


NL: 1.10E7  
 Base Peak m/z=  
 442.38338-442.38780 F: FTMS  
 + p ESI Full ms  
 [100.00-1500.00] MS  
 Hololenasp\_HDX



NL: 6.95E5  
 Base Peak m/z=  
 222.19874-222.20096 F: FTMS  
 + p ESI Full ms  
 [100.00-1500.00] MS  
 Hololenasp\_HDX

Hololenasp\_HDX #891 RT: 5.63 AV: 1 NL: 2.09E7  
 T: FTMS + p ESI Full ms [100.00-1500.00]



Hololenasp\_HDX #891 RT: 5.63 AV: 1 NL: 3.06E6  
 T: FTMS + p ESI Full ms [100.00-1500.00]

