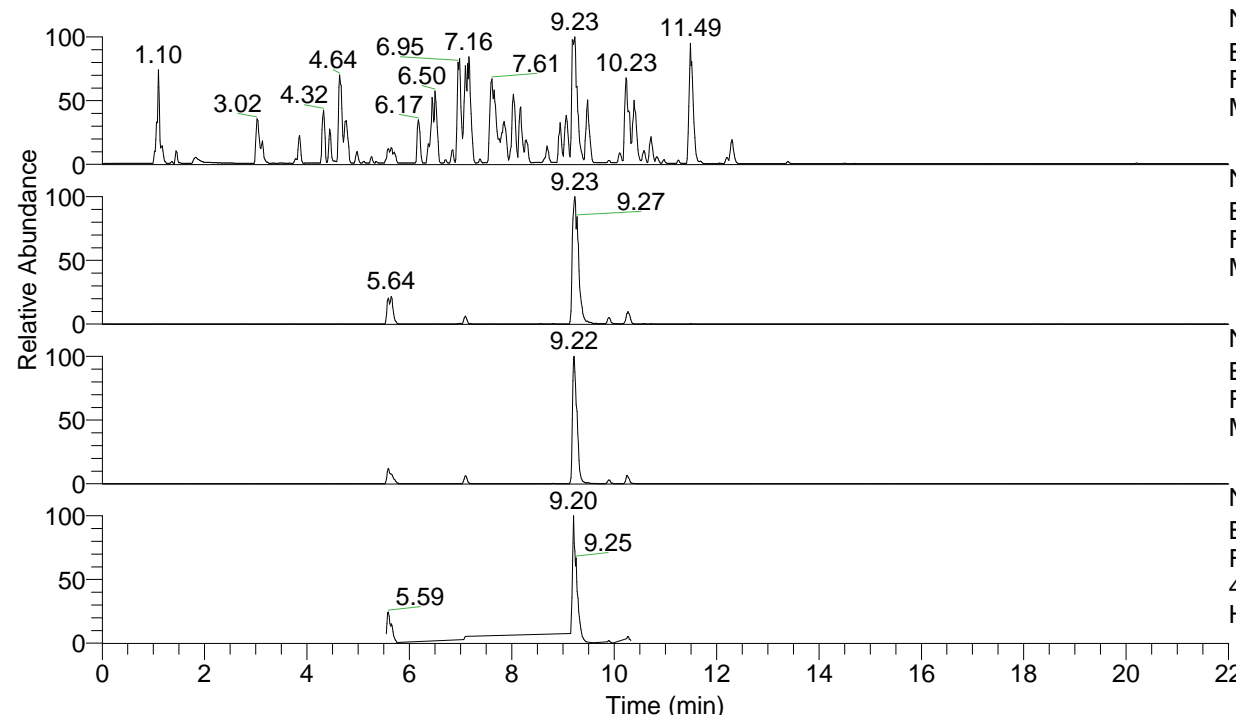


RT: 0.00 - 22.00



NL: 4.98E7
 Base Peak m/z= 100.00000-1500.00000 F:
 FTMS + p ESI Full ms [100.00-1500.00]
 MS Hololenasp

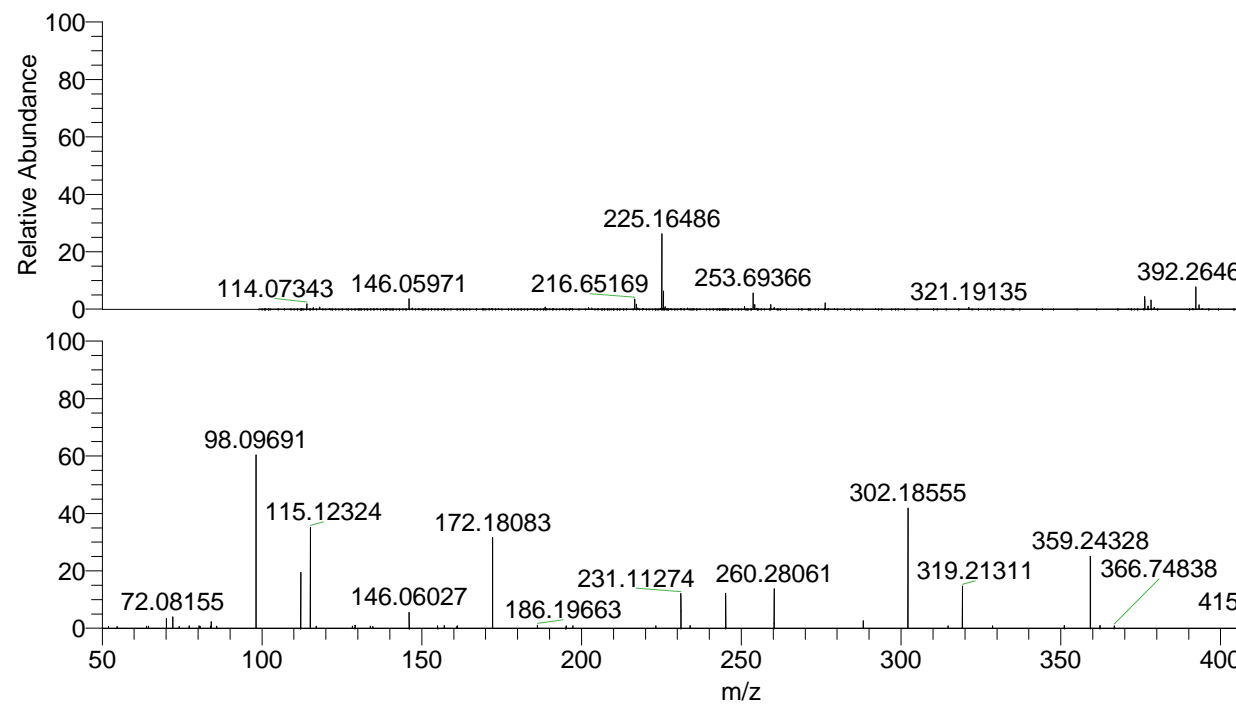
NL: 3.05E7
 Base Peak m/z= 433.32693-433.33127 F:
 FTMS + p ESI Full ms [100.00-1500.00]
 MS Hololenasp

NL: 9.92E6
 Base Peak m/z= 217.16737-217.16955 F:
 FTMS + p ESI Full ms [100.00-1500.00]
 MS Hololenasp

NL: 4.35E6
 Base Peak m/z= 50.00000-1500.00000 F:
 FTMS + p ESI d Full ms2
 433.33@hcd35.00 [50.00-460.00] MS
 Hololenasp

Hololenasp#2820-2831 RT: 7.06-7.09
 F: FTMS + p ESI d Full ms2 433.33 ...
 m/z= 50.00000-1000.00000

| m/z | Intensity | Relative |
|-----------|-----------|----------|
| 51.99291 | 1023.2 | 0.60 |
| 54.62533 | 1078.9 | 0.63 |
| 63.91588 | 1170.3 | 0.69 |
| 64.44846 | 1204.8 | 0.71 |
| 70.06575 | 5834.7 | 3.42 |
| 72.08155 | 6619.1 | 3.89 |
| 74.07874 | 1074.8 | 0.63 |
| 77.20655 | 1408.7 | 0.83 |
| 80.33403 | 1343.0 | 0.79 |
| 80.60099 | 1295.6 | 0.76 |
| 83.87495 | 1330.7 | 0.78 |
| 84.08138 | 3858.9 | 2.27 |
| 85.83730 | 1194.1 | 0.70 |
| 98.09691 | 103293.4 | 60.63 |
| 112.11241 | 32828.7 | 19.27 |
| 115.12324 | 59643.8 | 35.01 |
| 116.96219 | 1176.5 | 0.69 |
| 128.28266 | 1236.4 | 0.73 |
| 129.13916 | 1727.3 | 1.01 |
| 133.92448 | 1203.9 | 0.71 |
| 134.69381 | 1119.3 | 0.66 |
| 146.06027 | 9241.1 | 5.42 |
| 154.97445 | 1513.6 | 0.89 |
| 157.05567 | 1612.5 | 0.95 |
| 161.03915 | 1298.9 | 0.76 |
| 161.18257 | 1425.4 | 0.84 |
| 172.18083 | 53724.3 | 31.54 |
| 186.19663 | 1823.8 | 1.07 |
| 195.16447 | 1342.8 | 0.79 |
| 197.27440 | 1334.5 | 0.78 |
| 223.24506 | 1478.0 | 0.87 |
| 231.11274 | 20491.8 | 12.03 |
| 233.99954 | 1561.4 | 0.92 |
| 245.12866 | 20677.4 | 12.14 |
| 260.28061 | 23689.1 | 13.91 |
| 288.17168 | 4423.1 | 2.60 |
| 302.18555 | 70627.8 | 41.46 |
| 314.72314 | 1359.8 | 0.80 |
| 319.21311 | 24690.5 | 14.49 |
| 328.63309 | 1529.8 | 0.90 |
| 351.10017 | 1563.9 | 0.92 |
| 359.24328 | 43727.2 | 25.67 |
| 362.25187 | 1591.3 | 0.93 |
| 366.74838 | 1423.6 | 0.84 |
| 415.31806 | 7041.7 | 4.13 |
| 416.30191 | 3541.7 | 2.08 |
| 433.32775 | 170362.0 | 100.00 |



NL: 3.76E7
 Hololenasp#2833 RT:
 7.10 AV: 1 T: FTMS + p
 ESI Full ms
 [100.00-1500.00]

NL: 1.69E5
 Hololenasp#2816-2864
 RT: 7.06-7.09 AV: 3 F:
 FTMS + p ESI d Full ms2
 433.33@hcd35.00
 [50.00-460.00]