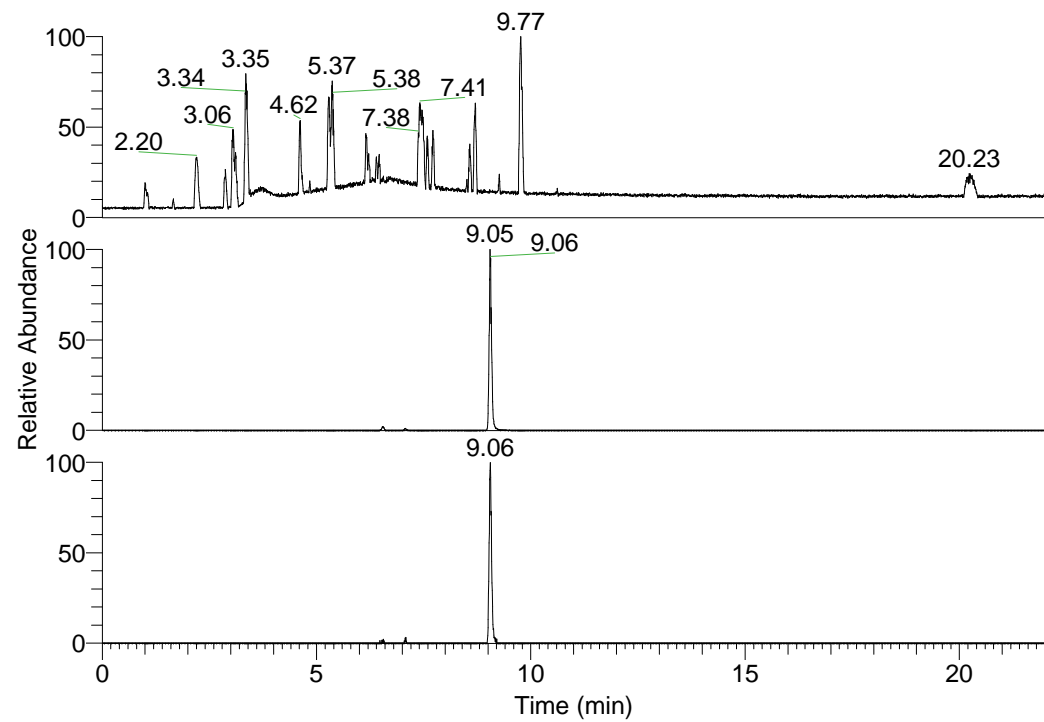


RT: 0.00 - 22.01



NL: 1.37E8
Base Peak m/z=
100.00000-1500.00000 F:
FTMS + p ESI Full ms
[100.00-1500.00] MS
Hololenasp_HDX

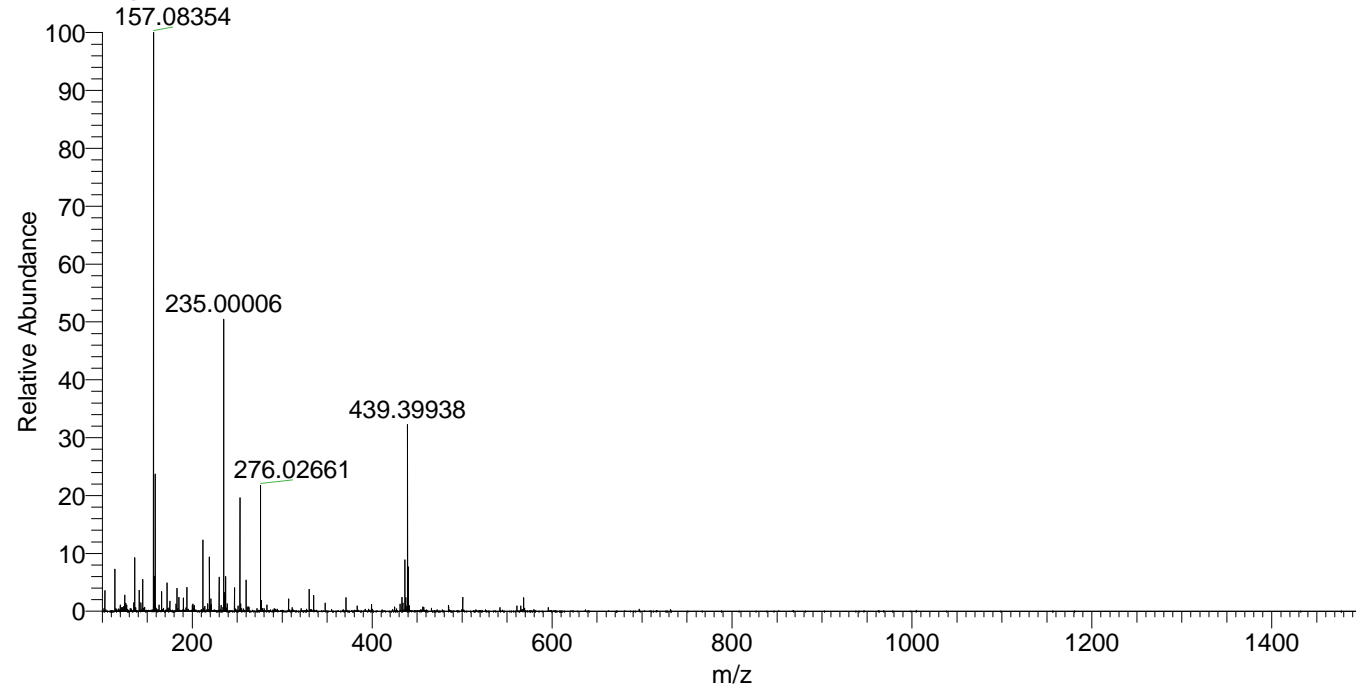
NL: 6.61E6
Base Peak m/z=
439.39785-439.40225 F: FTMS
+ p ESI Full ms
[100.00-1500.00] MS
Hololenasp_HDX

NL: 4.65E5
Base Peak m/z=
220.70598-220.70818 F: FTMS
+ p ESI Full ms
[100.00-1500.00] MS
Hololenasp_HDX

Hololenasp_HDX#1467 RT: 9.05
T: FTMS + p ESI Full ms [100.00-1500.00]
m/z= 439.00000-440.00000

m/z	Intensity	Relative	Delta (ppm)	Composition
439.39938	6609060.5	100.00	-0.27	C ₂₄ H ₃₅ ² H ₈ ON ₆
			3.26	C ₂₄ H ₃₃ ² H ₉ ON ₆
			-3.79	C ₂₄ H ₃₇ ² H ₇ ON ₆

Hololenasp_HDX #1467 RT: 9.05 AV: 1 NL: 2.03E7
T: FTMS + p ESI Full ms [100.00-1500.00]



Hololenasp_HDX #1467 RT: 9.05 AV: 1 NL: 6.57E6
T: FTMS + p ESI Full ms [100.00-1500.00]

