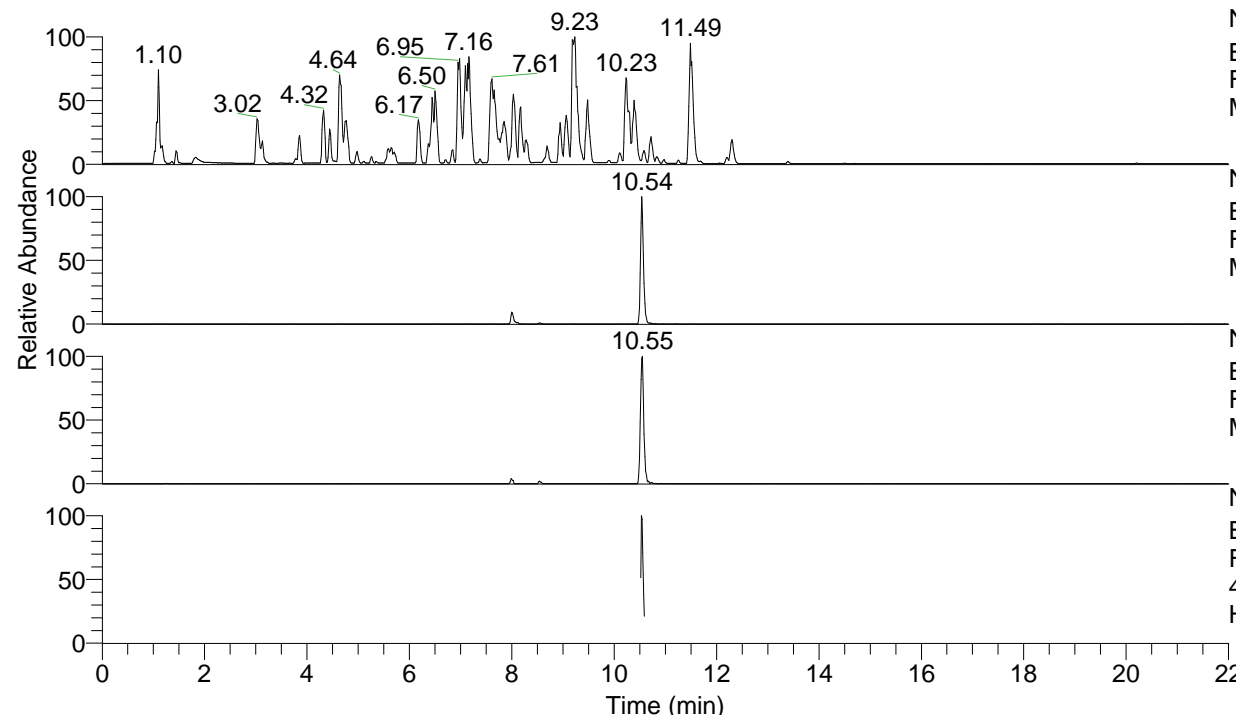


RT: 0.00 - 22.00



NL: 4.98E7
 Base Peak m/z= 100.00000-1500.00000 F:
 FTMS + p ESI Full ms [100.00-1500.00]
 MS Hololenasp

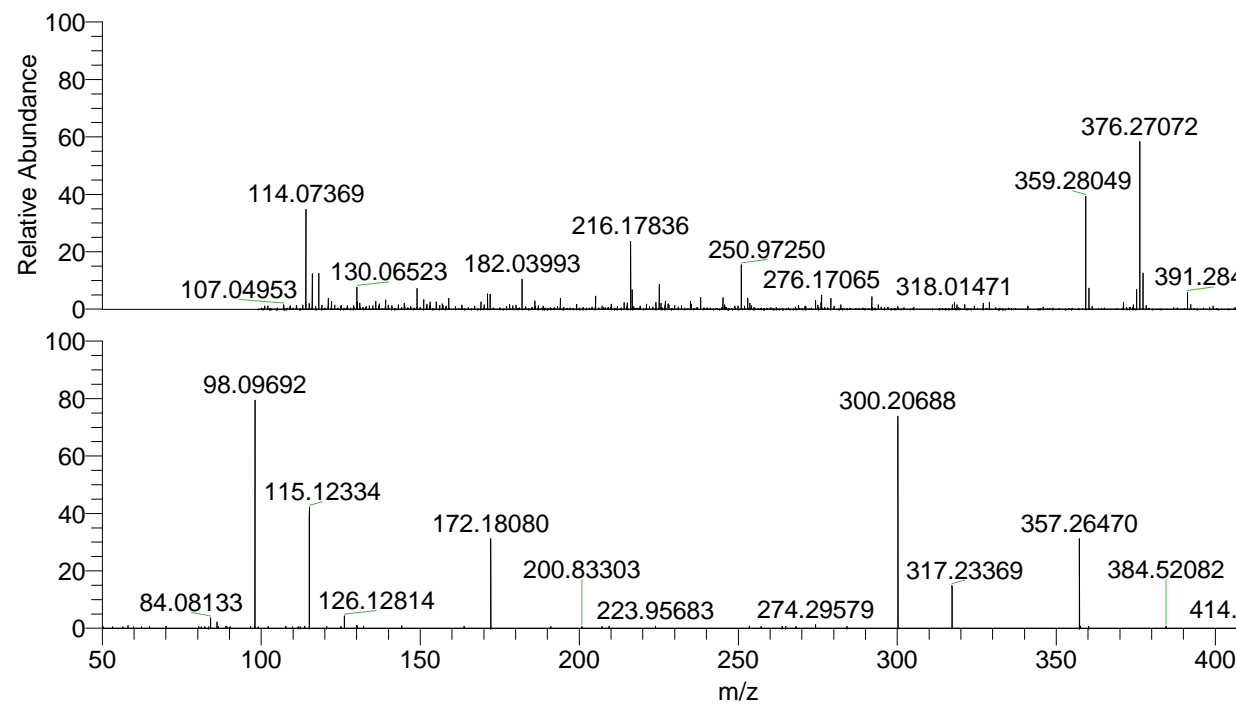
NL: 1.76E6
 Base Peak m/z= 431.34768-431.35200 F:
 FTMS + p ESI Full ms [100.00-1500.00]
 MS Hololenasp

NL: 4.38E5
 Base Peak m/z= 216.17775-216.17991 F:
 FTMS + p ESI Full ms [100.00-1500.00]
 MS Hololenasp

NL: 2.05E5
 Base Peak m/z= 50.00000-1500.00000 F:
 FTMS + p ESI d Full ms2
 431.35@hcd35.00 [50.00-460.00] MS
 Hololenasp

Hololenasp#4216-4232 RT: 10.52-10.56
 F: FTMS + p ESI d Full ms2 431.35 ...
 m/z= 50.00000-1000.00000

m/z	Intensity	Relative
58.06588	1397.3	0.89
59.77452	860.3	0.55
62.37159	887.3	0.57
64.81056	917.0	0.59
70.06598	1185.9	0.76
80.35804	826.3	0.53
81.15104	831.1	0.53
82.25369	879.3	0.56
83.41992	884.5	0.57
84.08133	5697.3	3.64
86.09704	3435.9	2.20
86.44545	1002.9	0.64
88.83555	980.8	0.63
89.24193	917.4	0.59
96.68366	910.2	0.58
97.97820	840.2	0.54
98.09692	127806.8	81.72
99.10201	838.2	0.54
102.21855	1035.3	0.66
107.71354	1082.6	0.69
109.86162	840.4	0.54
112.30281	856.9	0.55
113.63171	1084.7	0.69
115.12334	66512.0	42.53
120.56412	936.0	0.60
125.04851	951.1	0.61
126.12814	6838.3	4.37
130.06532	1781.6	1.14
130.17514	880.9	0.56
132.14970	1050.5	0.67
144.13816	1278.8	0.82
163.79116	1079.3	0.69
172.18080	49639.4	31.74
191.07565	926.4	0.59
200.83303	932.5	0.60
207.17551	924.5	0.59
209.38385	1069.8	0.68
223.95683	1180.1	0.75
253.46200	1050.6	0.67
257.17844	1015.0	0.65
263.80571	1040.9	0.67
264.91568	1035.8	0.66
268.15591	956.8	0.61
274.29579	2007.3	1.28
284.20577	1037.3	0.66
300.20688	115641.3	73.95
317.23369	23699.6	15.15
357.26470	49171.4	31.44
357.55538	1069.6	0.68
360.19270	1042.2	0.67
384.52082	1130.4	0.72
414.31958	1973.0	1.26
431.34888	156387.7	100.00
448.38671	1158.1	0.74
453.03553	1125.6	0.72



NL: 1.76E6
 Hololenasp#4225 RT:
 10.54 AV: 1 T: FTMS + p
 ESI Full lock ms
 [100.00-1500.00]

NL: 1.56E5
 Hololenasp#4215-4237
 RT: 10.52-10.56 AV: 4 F:
 FTMS + p ESI d Full ms2
 431.35@hcd35.00
 [50.00-460.00]

m/z	Intensity	Relative
431.34943	1000.0	100.00
376.27072	60.0	6.00
359.28049	45.0	4.50
216.17836	25.0	2.50
114.07369	35.0	3.50
431.34888	1000.0	100.00
300.20688	75.0	7.50
172.18080	30.0	3.00
98.09692	80.0	8.00
115.12334	45.0	4.50
172.18080	30.0	3.00
200.83303	20.0	2.00
317.23369	15.0	1.50
357.26470	35.0	3.50
384.52082	10.0	1.00
414.31958	15.0	1.50
84.08133	10.0	1.00
126.12814	10.0	1.00
223.95683	10.0	1.00
274.29579	10.0	1.00
317.23369	15.0	1.50
384.52082	10.0	1.00
414.31958	15.0	1.50