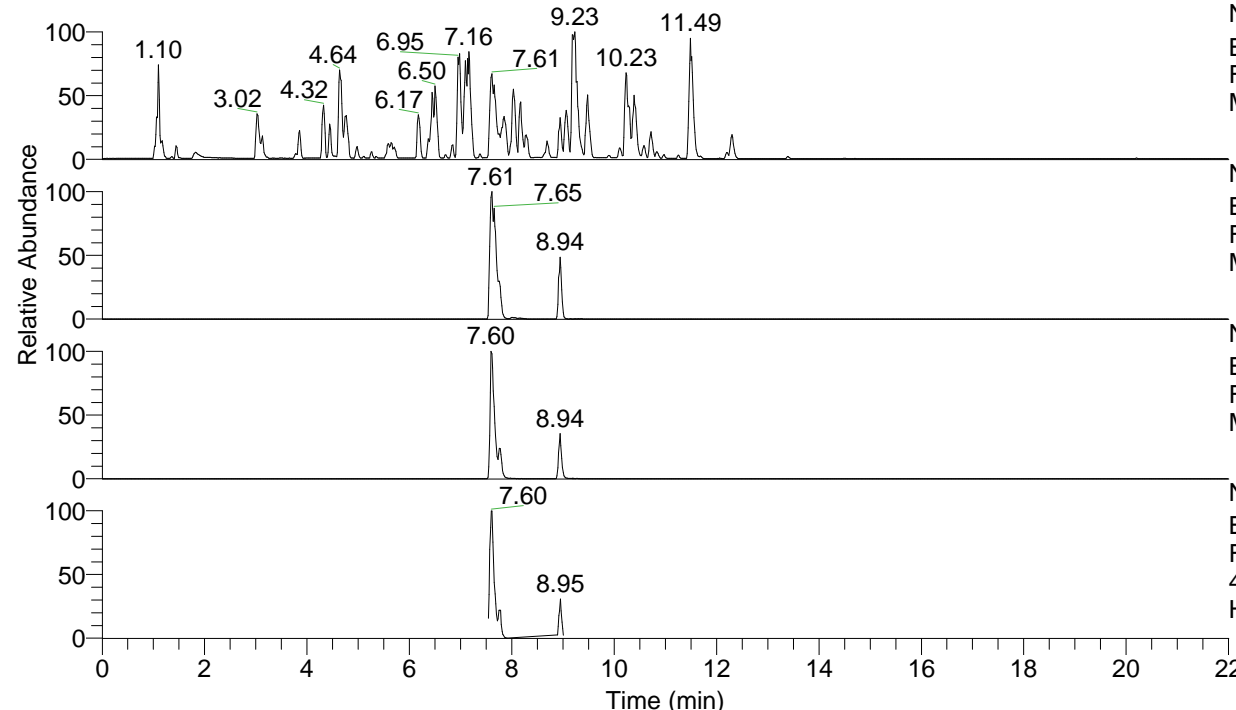


RT: 0.00 - 22.00



NL: 4.98E7  
 Base Peak m/z= 100.00000-1500.00000 F:  
 FTMS + p ESI Full ms [100.00-1500.00]  
 MS Hololenasp

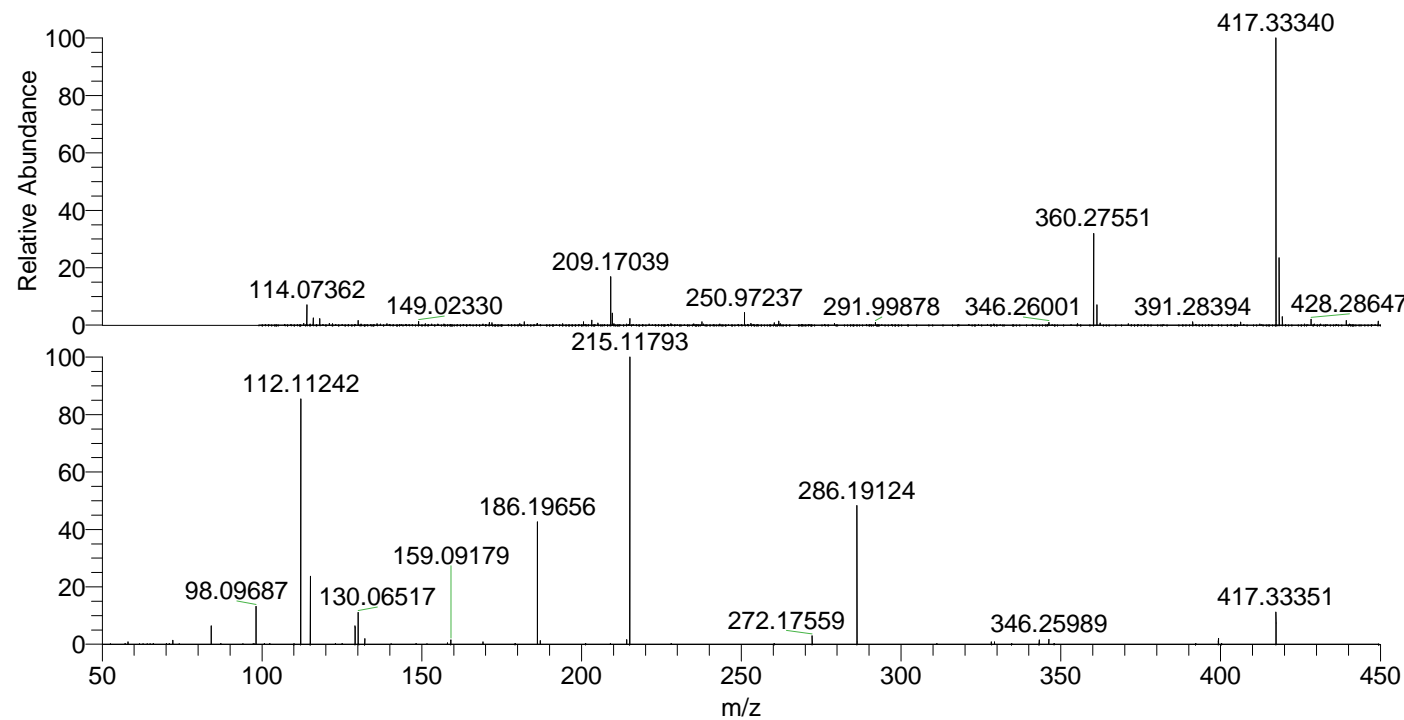
NL: 3.35E7  
 Base Peak m/z= 417.33209-417.33627 F:  
 FTMS + p ESI Full ms [100.00-1500.00]  
 MS Hololenasp

NL: 7.03E6  
 Base Peak m/z= 209.16995-209.17205 F:  
 FTMS + p ESI Full ms [100.00-1500.00]  
 MS Hololenasp

NL: 7.07E6  
 Base Peak m/z= 50.00000-1500.00000 F:  
 FTMS + p ESI d Full ms2  
 417.33@hcd35.00 [50.00-445.00] MS  
 Hololenasp

Hololenasp#3110-3116 RT: 7.78-7.79 AV: 2  
 F: FTMS + p ESI d Full ms2 417.33@h ...  
 m/z= 50.00000-1000.00000

m/z	Intensity	Relative
58.06595	9323.8	0.86
72.08152	14944.3	1.37
84.08142	67410.6	6.19
98.09687	142582.9	13.09
112.11242	930014.4	85.40
115.12327	259899.8	23.87
129.13871	68363.7	6.28
130.06517	117868.4	10.82
132.14957	20539.0	1.89
159.09179	16320.2	1.50
169.16990	8980.3	0.82
186.19656	453290.0	41.63
187.08655	13920.7	1.28
214.13373	17159.6	1.58
215.11793	1088976.9	100.00
272.17559	32889.7	3.02
286.19124	513857.6	47.19
328.24916	8341.0	0.77
329.23471	8704.4	0.80
343.24836	15862.1	1.46
346.25989	18532.8	1.70
399.32313	22411.2	2.06
417.33351	122855.9	11.28



NL: 9.95E6  
 Hololenasp#3103 RT:  
 7.76 AV: 1 T: FTMS + p  
 ESI Full lock ms  
 [100.00-1500.00]

NL: 1.06E6  
 Hololenasp#3109-3118  
 RT: 7.78-7.79 AV: 2 F:  
 FTMS + p ESI d Full ms2  
 417.33@hcd35.00  
 [50.00-445.00]