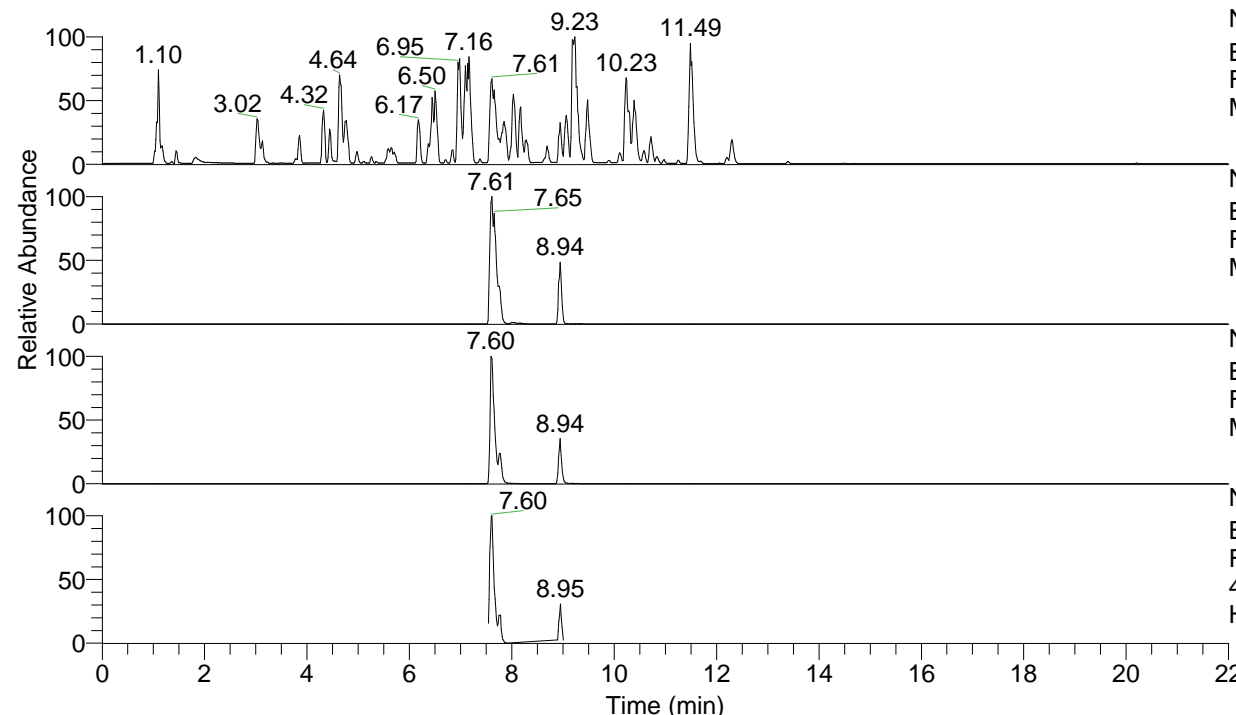


RT: 0.00 - 22.00



NL: 4.98E7  
 Base Peak m/z= 100.00000-1500.00000 F:  
 FTMS + p ESI Full ms [100.00-1500.00]  
 MS Hololenasp

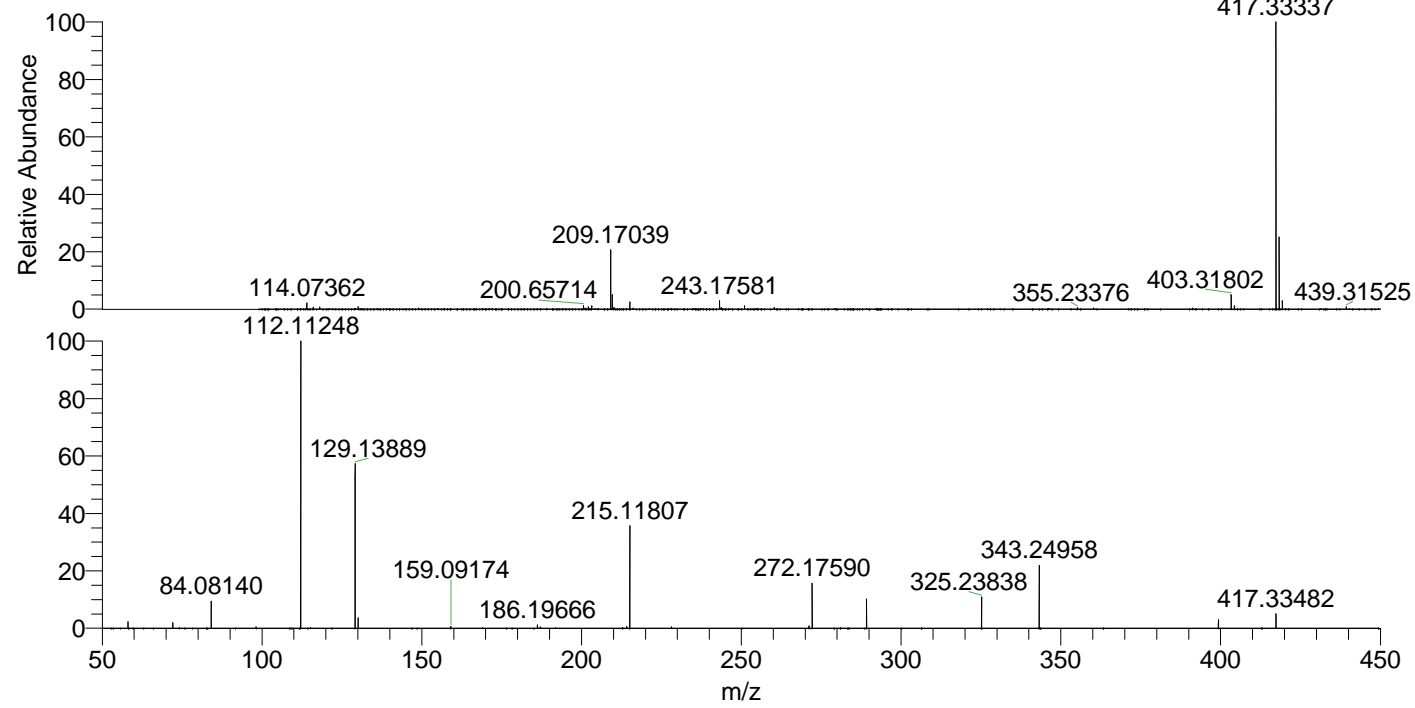
NL: 3.35E7  
 Base Peak m/z= 417.33209-417.33627 F:  
 FTMS + p ESI Full ms [100.00-1500.00]  
 MS Hololenasp

NL: 7.03E6  
 Base Peak m/z= 209.16995-209.17205 F:  
 FTMS + p ESI Full ms [100.00-1500.00]  
 MS Hololenasp

NL: 7.07E6  
 Base Peak m/z= 50.00000-1500.00000 F:  
 FTMS + p ESI d Full ms2  
 417.33@hcd35.00 [50.00-445.00] MS  
 Hololenasp

Hololenasp#3017-3038 RT: 7.55-7.60 AV: 5  
 F: FTMS + p ESI d Full ms2 417.33@h ...  
 m/z= 50.00000-1000.00000

m/z	Intensity	Relative
58.06600	94313.7	2.27
72.08154	77168.1	1.86
84.08140	415741.2	10.02
98.09705	21316.8	0.51
112.11250	4147995.0	100.00
129.13890	2406211.3	58.01
130.06511	164268.9	3.96
159.09163	22124.5	0.53
186.19657	54818.0	1.32
187.08673	28979.8	0.70
214.13365	23456.5	0.57
215.11812	1514196.6	36.50
271.19089	27625.1	0.67
272.17589	658333.1	15.87
289.20261	420057.8	10.13
325.23850	422878.0	10.19
343.24962	926770.1	22.34
399.32336	117455.2	2.83
417.33453	200439.3	4.83



NL: 3.33E7  
 Hololenasp#3043 RT:  
 7.61 AV: 1 T: FTMS + p  
 ESI Full ms  
 [100.00-1500.00]

NL: 3.49E6  
 Hololenasp#3007-3033  
 RT: 7.55-7.59 AV: 4 F:  
 FTMS + p ESI d Full ms2  
 417.33@hcd35.00  
 [50.00-445.00]