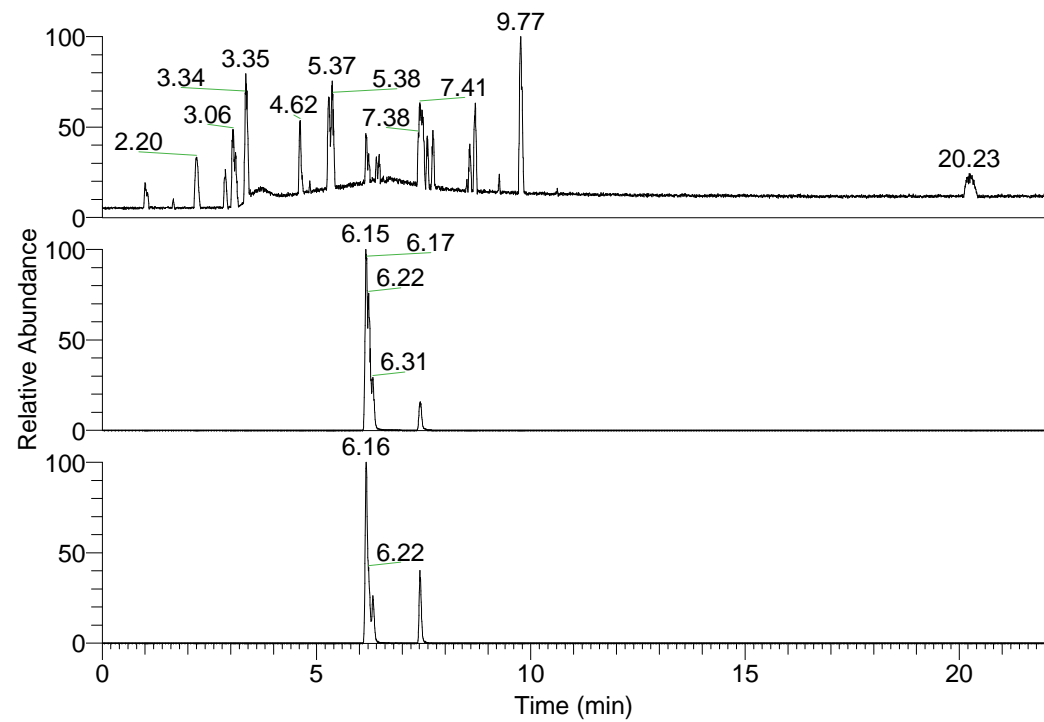


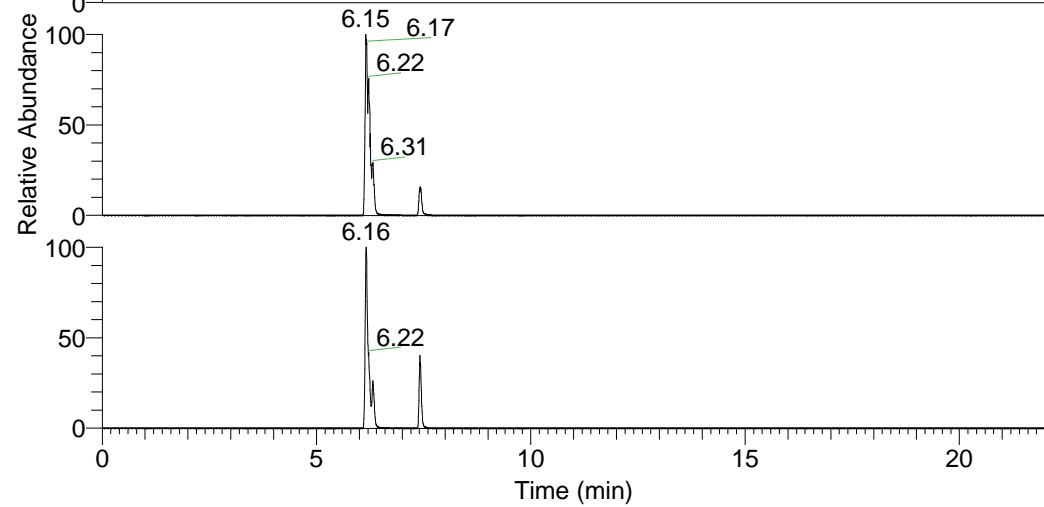
RT: 0.00 - 22.01



NL: 1.37E8
Base Peak m/z=
100.00000-1500.00000 F:
FTMS + p ESI Full ms
[100.00-1500.00] MS
Hololenasp_HDX

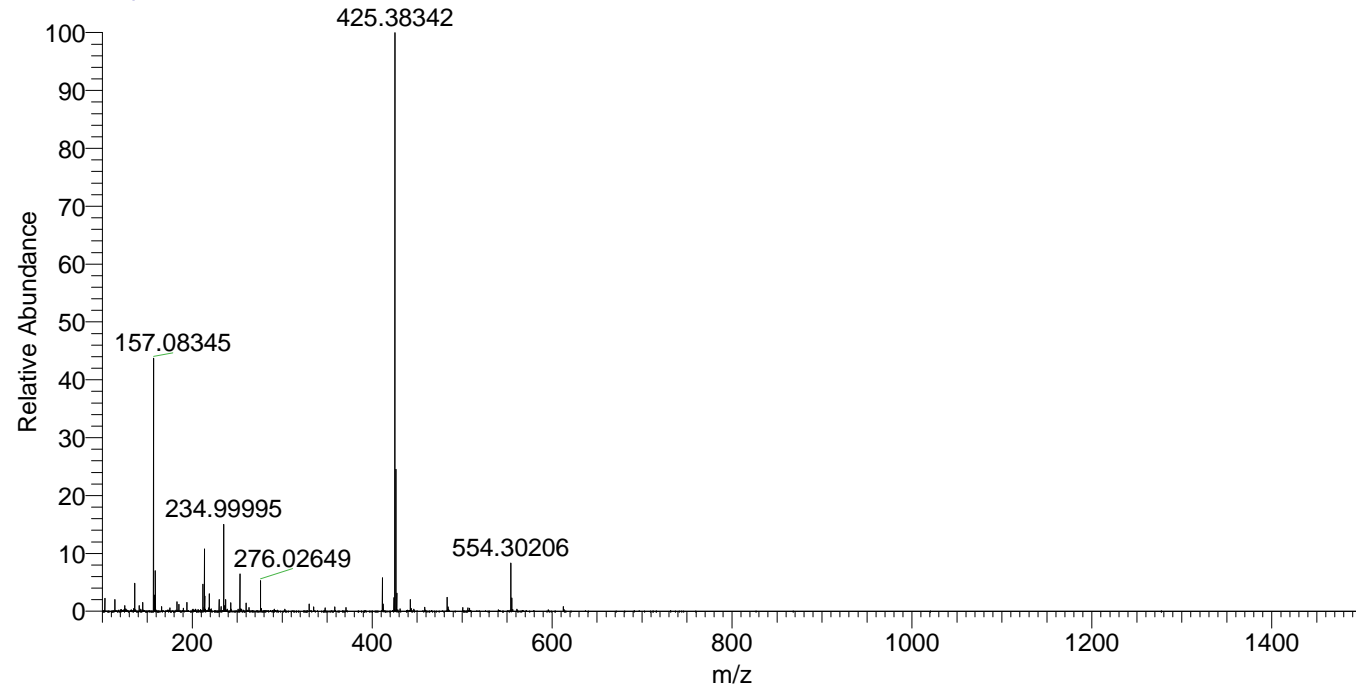
Hololenasp_HDX#977 RT: 6.15
T: FTMS + p ESI Full ms [100.00-1500.00]
m/z= 425.00000-426.00000

m/z	Intensity	Relative	Delta (ppm)	Composition
425.38342	63740524.0	100.00	-1.01	C ₂₃ H ₃₃ ² H ₈ ON ₆
			2.63	C ₂₃ H ₃₁ ² H ₉ ON ₆
			-4.64	C ₂₃ H ₃₅ ² H ₇ ON ₆



NL: 6.37E7
Base Peak m/z=
425.38227-425.38653 F: FTMS
+ p ESI Full ms
[100.00-1500.00] MS
Hololenasp_HDX

Hololenasp_HDX #977 RT: 6.15 AV: 1 NL: 6.31E7
T: FTMS + p ESI Full ms [100.00-1500.00]



Hololenasp_HDX #977 RT: 6.15 AV: 1 NL: 6.31E7
T: FTMS + p ESI Full ms [100.00-1500.00]

