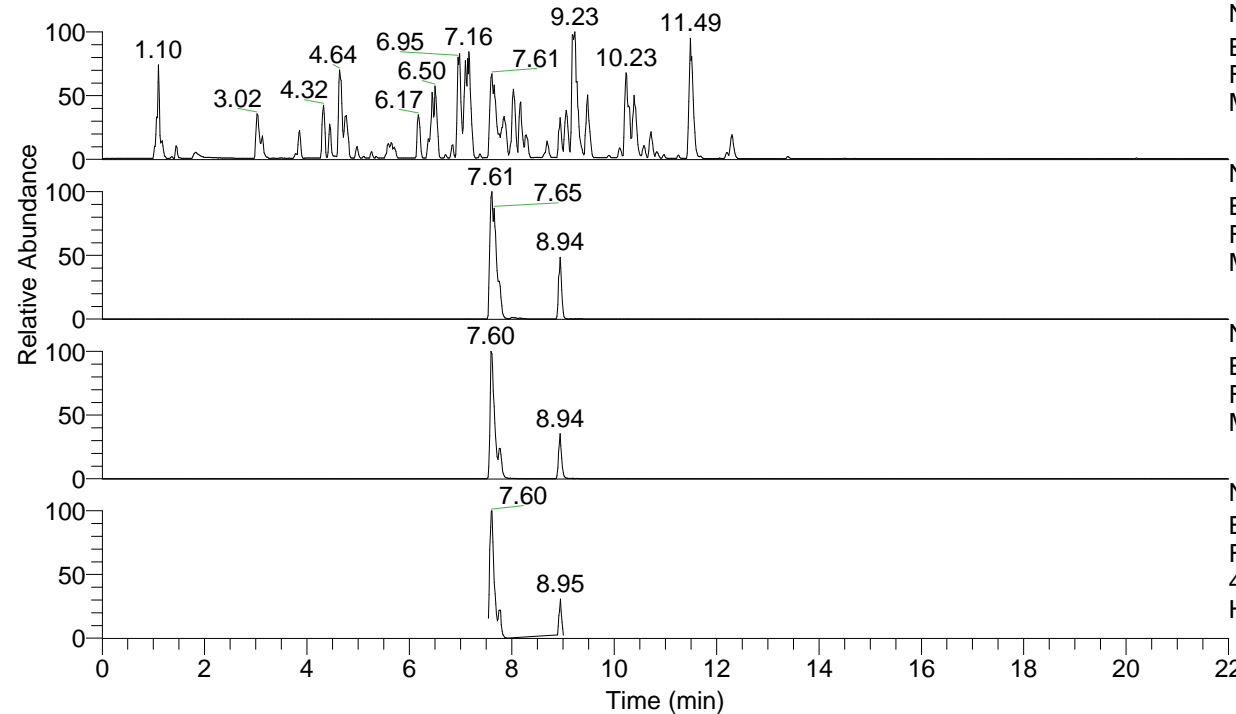


RT: 0.00 - 22.00



NL: 4.98E7  
 Base Peak m/z= 100.00000-1500.00000 F:  
 FTMS + p ESI Full ms [100.00-1500.00]  
 MS Hololenasp

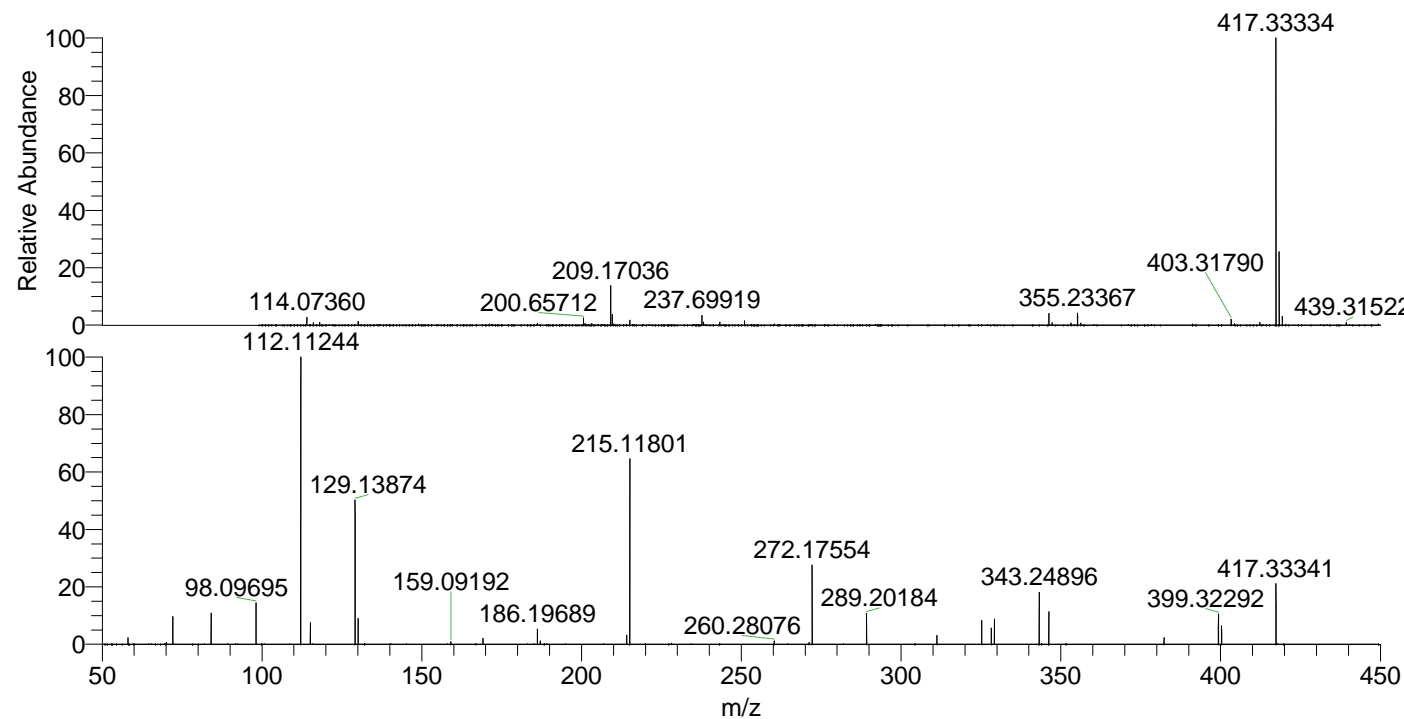
NL: 3.35E7  
 Base Peak m/z= 417.33209-417.33627 F:  
 FTMS + p ESI Full ms [100.00-1500.00]  
 MS Hololenasp

NL: 7.03E6  
 Base Peak m/z= 209.16995-209.17205 F:  
 FTMS + p ESI Full ms [100.00-1500.00]  
 MS Hololenasp

NL: 7.07E6  
 Base Peak m/z= 50.00000-1500.00000 F:  
 FTMS + p ESI d Full ms2  
 417.33@hcd35.00 [50.00-445.00] MS  
 Hololenasp

Hololenasp#3050-3068 RT: 7.63-7.67 AV: 4  
 F: FTMS + p ESI d Full ms2 417.33@h ...  
 m/z= 50.00000-1000.00000

m/z	Intensity	Relative
58.06596	76190.9	2.18
70.06585	21707.2	0.62
72.08154	333719.3	9.54
84.08145	366693.9	10.48
98.09695	498376.6	14.25
112.11244	3497942.0	100.00
115.12324	261653.6	7.48
129.13874	1710391.9	48.90
130.06515	304862.6	8.72
159.09192	27738.8	0.79
169.16994	68836.4	1.97
186.19689	177433.8	5.07
187.08707	38846.8	1.11
214.13401	109012.3	3.12
215.11801	2254359.8	64.45
260.28076	40303.0	1.15
271.19207	20367.8	0.58
272.17554	957878.6	27.38
289.20184	366651.8	10.48
311.22231	106978.7	3.06
325.23888	279859.6	8.00
328.24918	191044.1	5.46
329.23341	300927.8	8.60
343.24896	611988.4	17.50
346.26014	382486.2	10.93
382.29650	78448.9	2.24
399.32292	358804.5	10.26
400.30718	223477.7	6.39
417.33341	736749.4	21.06



NL: 2.89E7  
 Hololenasp#3061 RT:  
 7.65 AV: 1 T: FTMS + p  
 ESI Full ms  
 [100.00-1500.00]

NL: 3.38E6  
 Hololenasp#3048-3073  
 RT: 7.63-7.67 AV: 4 F:  
 FTMS + p ESI d Full ms2  
 417.33@hcd35.00  
 [50.00-445.00]