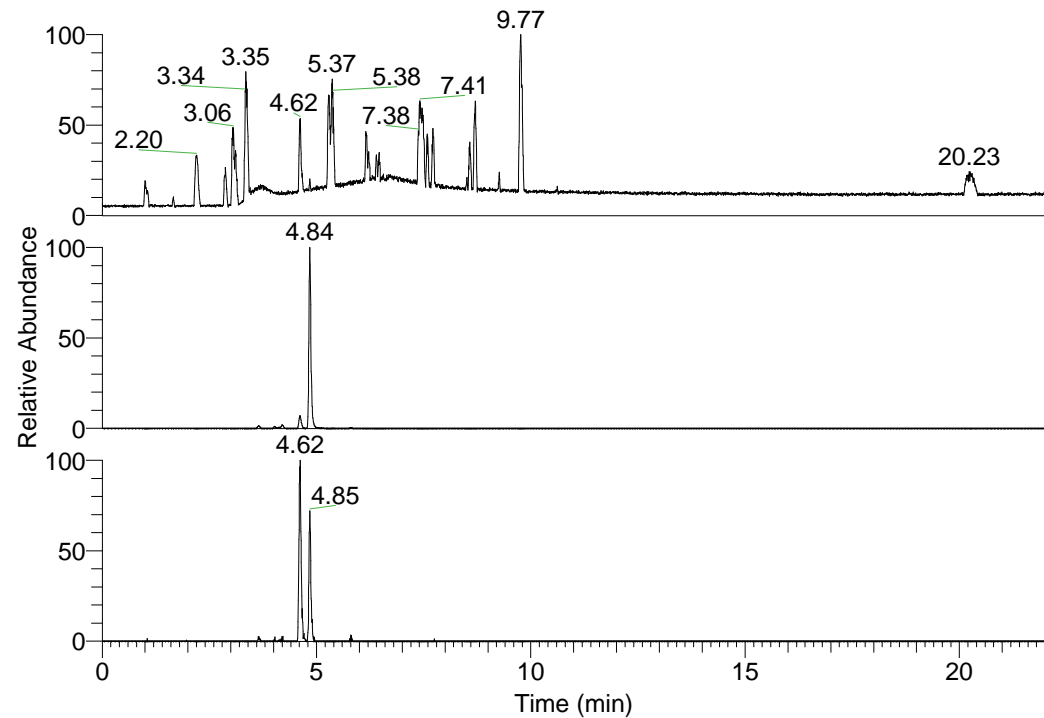


RT: 0.00 - 22.01



NL: 1.37E8
Base Peak m/z=
100.00000-1500.00000 F:
FTMS + p ESI Full ms
[100.00-1500.00] MS
Hololenasp_HDX

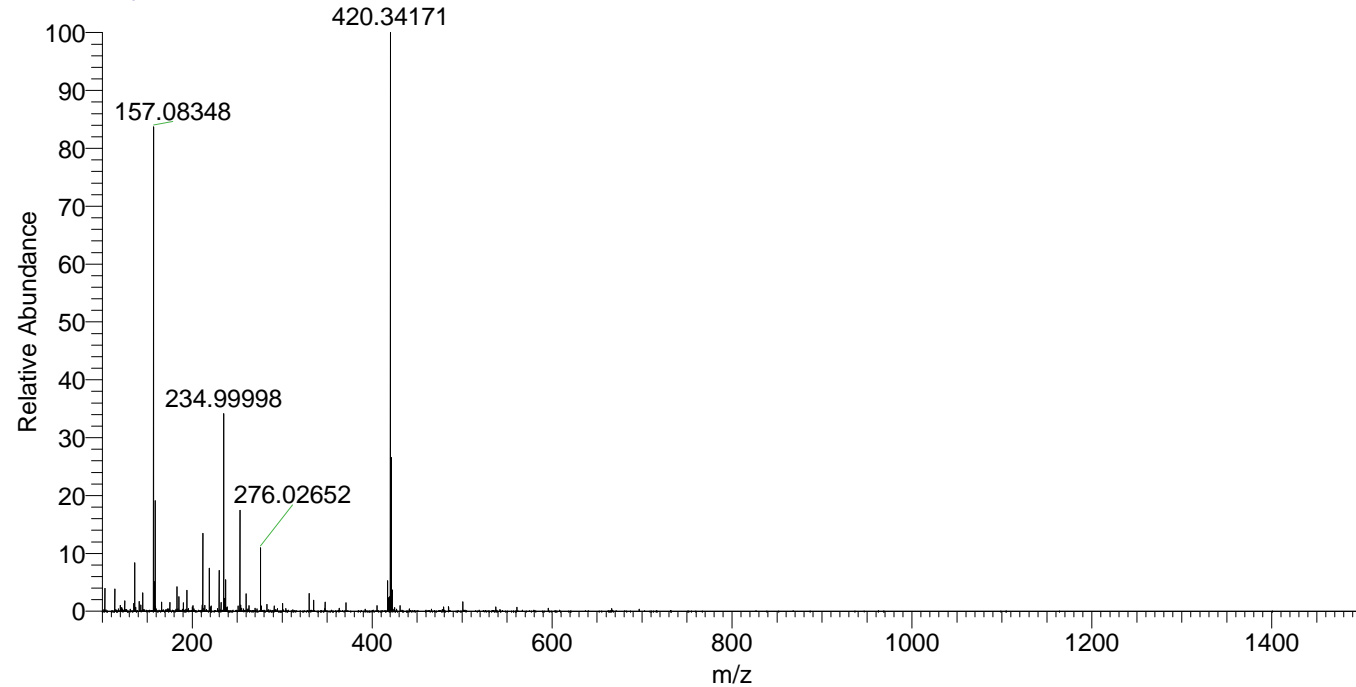
Hololenasp_HDX#759 RT: 4.84
T: FTMS + p ESI Full ms [100.00-1500.00]
m/z= 420.00000-421.00000

m/z	Intensity	Relative	Delta (ppm)	Composition
420.34171	27755444.0	100.00	-0.81	C ₂₀ H ₃₀ ² H ₈ O ₄ N ₅
			2.87	C ₂₀ H ₂₈ ² H ₉ O ₄ N ₅
			-4.49	C ₂₀ H ₃₂ ² H ₇ O ₄ N ₅

NL: 2.78E7
Base Peak m/z=
420.34050-420.34470 F: FTMS
+ p ESI Full ms
[100.00-1500.00] MS
Hololenasp_HDX

NL: 4.31E5
Base Peak m/z=
211.17729-211.17941 F: FTMS
+ p ESI Full ms
[100.00-1500.00] MS
Hololenasp_HDX

Hololenasp_HDX #759 RT: 4.84 AV: 1 NL: 2.68E7
T: FTMS + p ESI Full ms [100.00-1500.00]



Hololenasp_HDX #759 RT: 4.84 AV: 1 NL: 2.68E7
T: FTMS + p ESI Full ms [100.00-1500.00]

