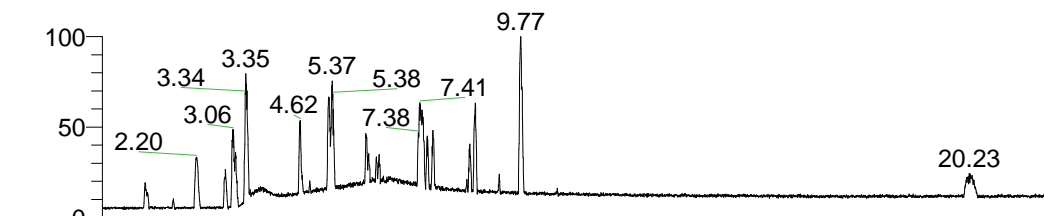


RT: 0.00 - 22.01



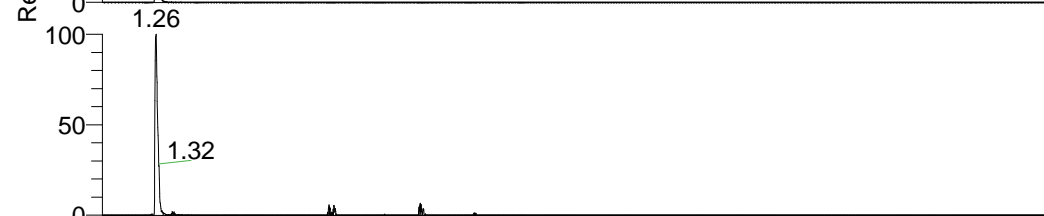
NL: 1.37E8  
 Base Peak m/z=  
 100.00000-1500.00000 F:  
 FTMS + p ESI Full ms  
 [100.00-1500.00] MS  
 Hololenasp\_HDX

Hololenasp\_HDX#189 RT: 1.26  
 T: FTMS + p ESI Full ms [100.00-1500.00]  
 m/z= 408.00000-409.00000

m/z	Intensity	Relative	Delta (ppm)	Composition
408.40359	2194200.5	100.00	-0.47	C <sub>20</sub> H <sub>38</sub> <sup>2</sup> H <sub>7</sub> O <sub>2</sub> N <sub>6</sub>
			3.32	C <sub>20</sub> H <sub>36</sub> <sup>2</sup> H <sub>8</sub> O <sub>2</sub> N <sub>6</sub>
			-4.26	C <sub>20</sub> H <sub>40</sub> <sup>2</sup> H <sub>6</sub> O <sub>2</sub> N <sub>6</sub>

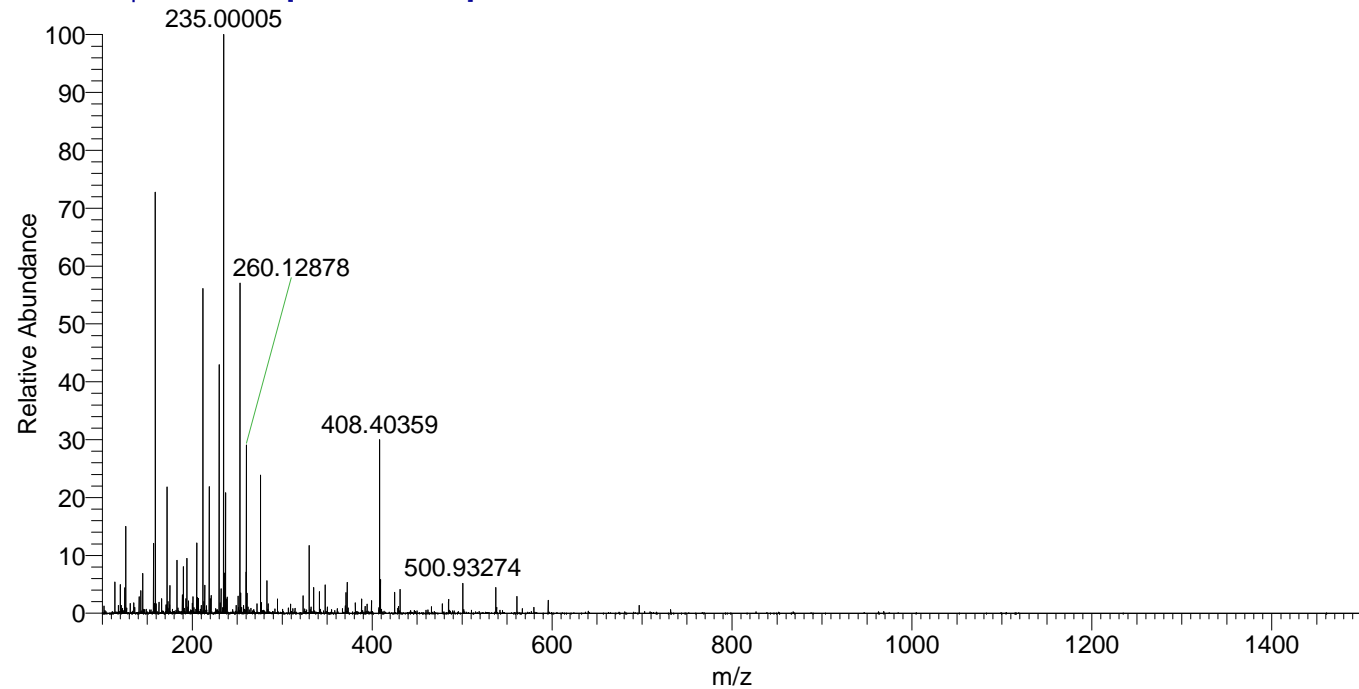


NL: 2.19E6  
 Base Peak m/z=  
 408.40230-408.40638 F: FTMS  
 + p ESI Full ms  
 [100.00-1500.00] MS  
 Hololenasp\_HDX



NL: 8.84E5  
 Base Peak m/z=  
 205.20819-205.21025 F: FTMS  
 + p ESI Full ms  
 [100.00-1500.00] MS  
 Hololenasp\_HDX

Hololenasp\_HDX #189 RT: 1.26 AV: 1 NL: 7.29E6  
 T: FTMS + p ESI Full ms [100.00-1500.00]



Hololenasp\_HDX #189 RT: 1.26 AV: 1 NL: 2.18E6  
 T: FTMS + p ESI Full ms [100.00-1500.00]

