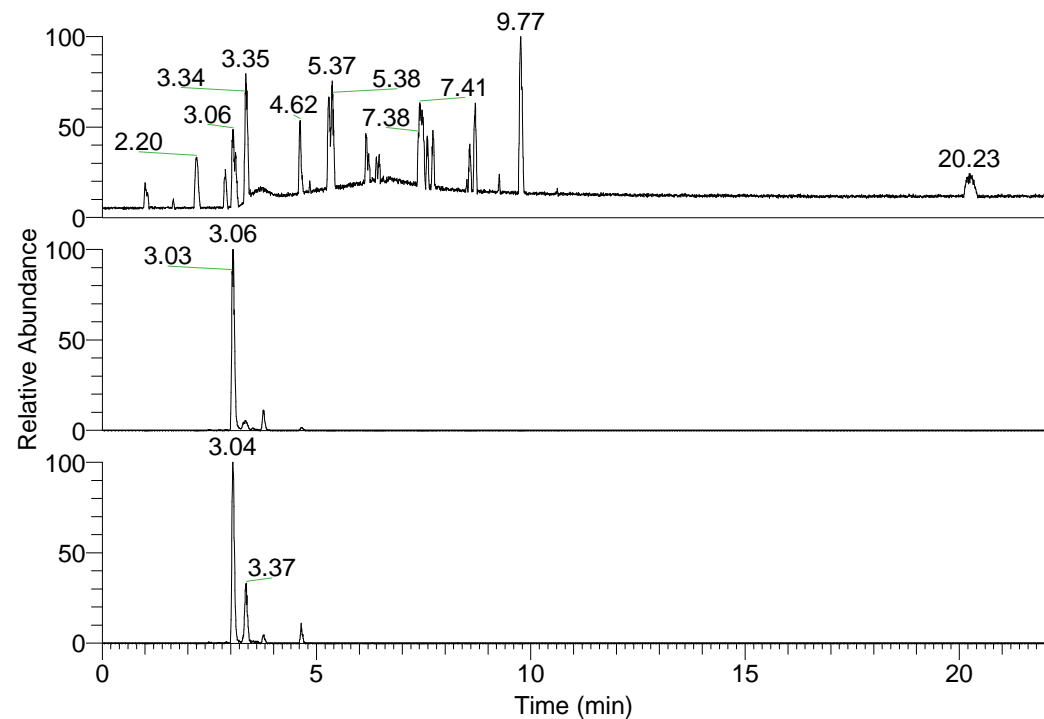


RT: 0.00 - 22.01



NL: 1.37E8
 Base Peak m/z=
 100.00000-1500.00000 F:
 FTMS + p ESI Full ms
 [100.00-1500.00] MS
 Hololensp_HDX

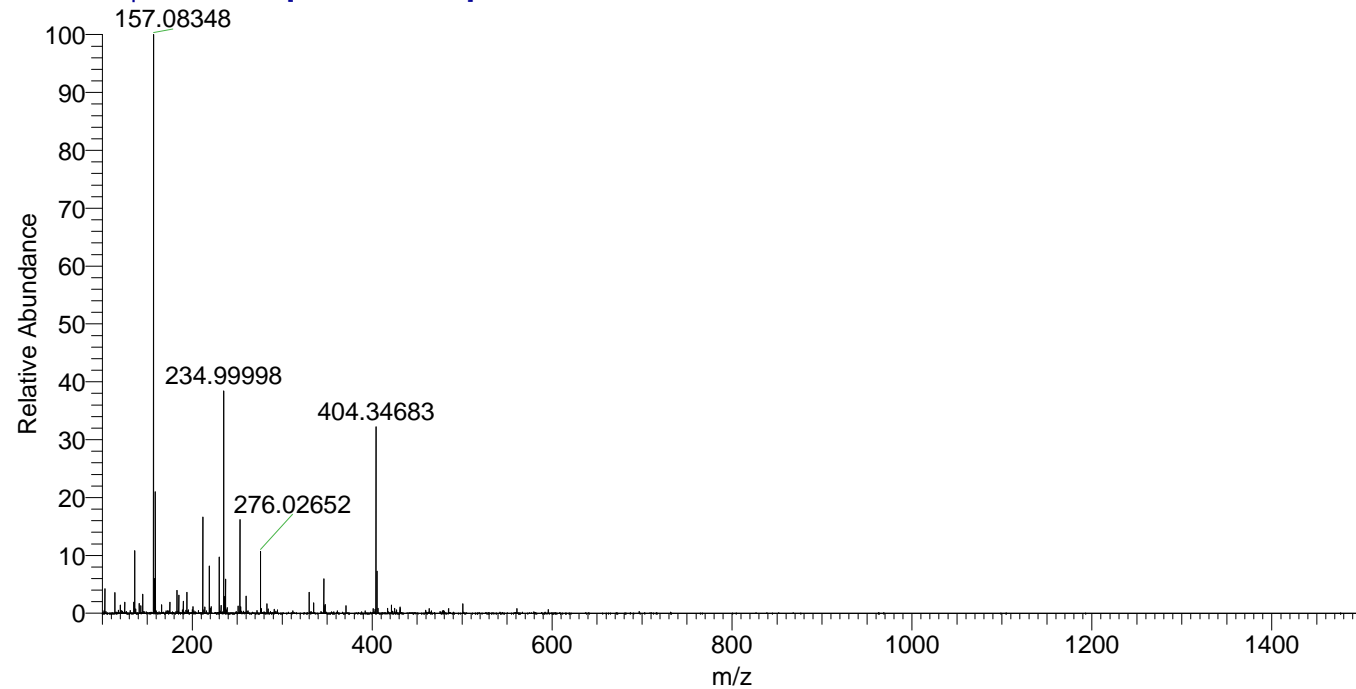
NL: 6.66E7
 Base Peak m/z=
 404.34566-404.34970 F: FTMS
 + p ESI Full ms
 [100.00-1500.00] MS
 Hololensp_HDX

NL: 1.49E6
 Base Peak m/z=
 203.17987-203.18191 F: FTMS
 + p ESI Full ms
 [100.00-1500.00] MS
 Hololensp_HDX

Hololensp_HDX#583 RT: 3.77
 T: FTMS + p ESI Full ms [100.00-1500.00]
 m/z= 404.00000-405.00000

m/z	Intensity	Relative	Delta (ppm)	Composition
404.34683	7431820.5	100.00	-0.74	C ₂₀ H ₃₀ ² H ₈ O ₃ N ₅
			3.09	C ₂₀ H ₂₈ ² H ₉ O ₃ N ₅
			-4.57	C ₂₀ H ₃₂ ² H ₇ O ₃ N ₅

Hololensp_HDX #583 RT: 3.77 AV: 1 NL: 2.26E7
 T: FTMS + p ESI Full ms [100.00-1500.00]



Hololensp_HDX #583 RT: 3.77 AV: 1 NL: 7.29E6
 T: FTMS + p ESI Full ms [100.00-1500.00]

