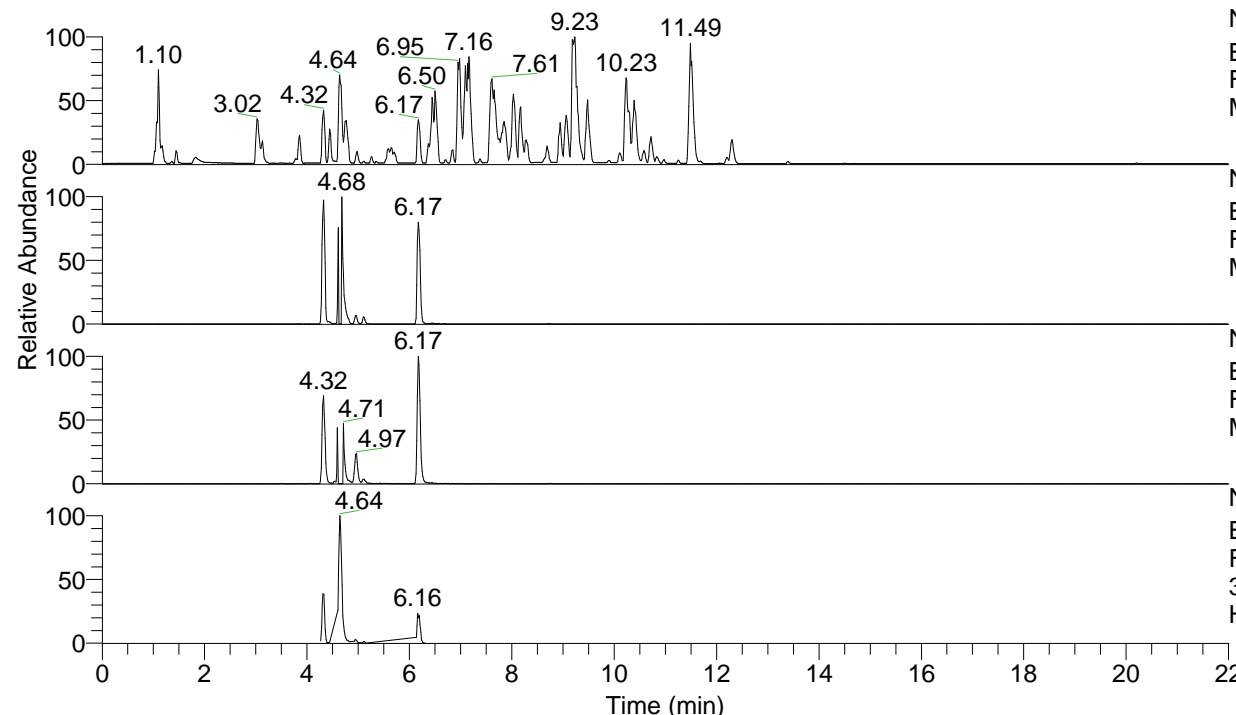


RT: 0.00 - 22.00



NL: 4.98E7  
 Base Peak m/z= 100.00000-1500.00000 F:  
 FTMS + p ESI Full ms [100.00-1500.00]  
 MS Hololenasp

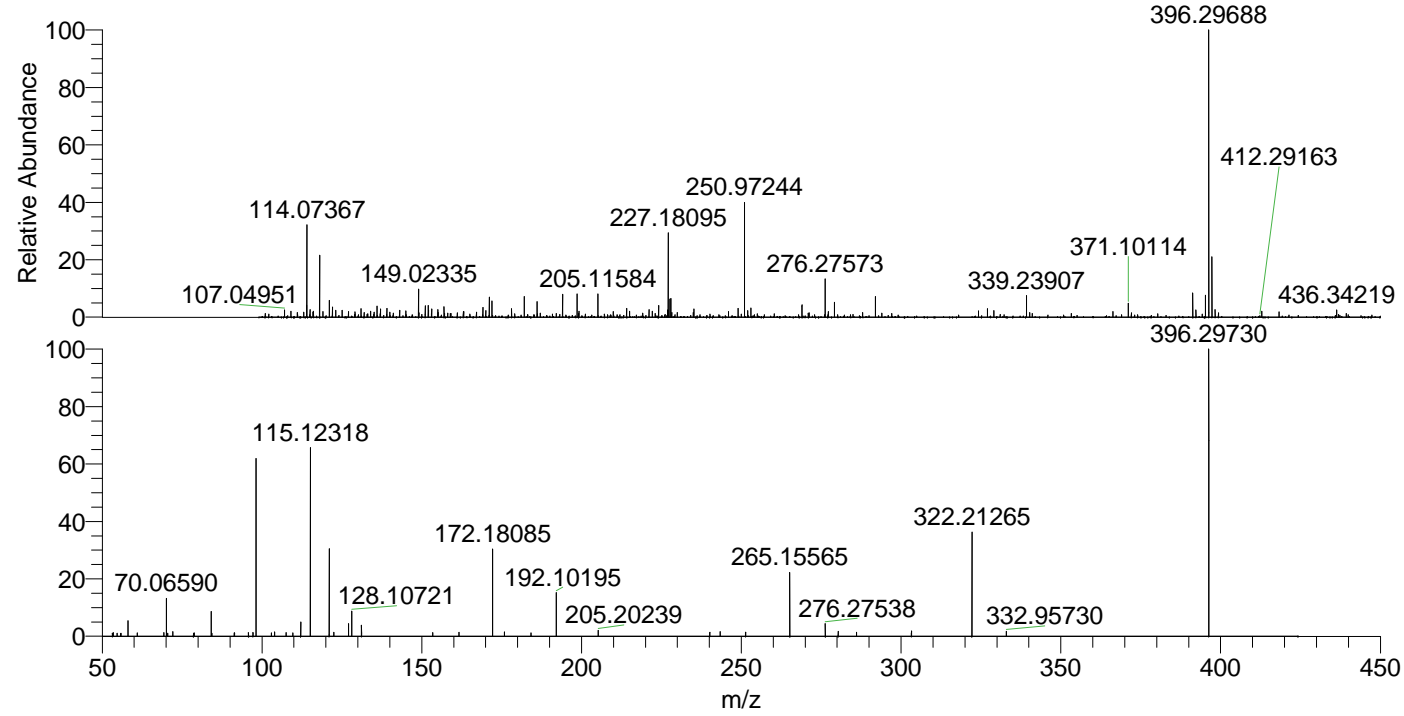
NL: 2.18E7  
 Base Peak m/z= 396.29549-396.29945 F:  
 FTMS + p ESI Full ms [100.00-1500.00]  
 MS Hololenasp

NL: 2.75E6  
 Base Peak m/z= 198.65166-198.65364 F:  
 FTMS + p ESI Full ms [100.00-1500.00]  
 MS Hololenasp

NL: 8.25E6  
 Base Peak m/z= 50.00000-1500.00000 F:  
 FTMS + p ESI d Full ms2  
 396.30@hcd35.00 [50.00-420.00] MS  
 Hololenasp

Hololenasp#2027-2042 RT: 5.08-5.12  
 F: FTMS + p ESI d Full ms2 396.30 ...  
 m/z= 50.00000-1000.00000

m/z	Intensity	Relative
53.46441	912.3	1.14
57.00715	858.1	1.07
58.06598	3762.7	4.70
60.92330	825.6	1.03
65.28793	814.2	1.02
69.31257	934.4	1.17
70.06589	9538.2	11.91
70.51913	790.9	0.99
72.08146	1160.5	1.45
72.41186	819.4	1.02
78.80247	828.6	1.03
84.08145	6100.1	7.62
91.29929	825.4	1.03
91.46360	832.4	1.04
91.75232	1403.3	1.75
95.77752	905.5	1.13
97.18253	883.9	1.10
98.09684	49217.4	61.44
99.74261	804.9	1.00
102.91959	798.0	1.00
103.96307	1092.7	1.36
107.54206	897.4	1.12
109.67108	877.5	1.10
112.11241	5569.6	6.95
115.12322	54010.9	67.42
121.02868	24493.5	30.58
122.49672	941.9	1.18
127.12286	3082.0	3.85
128.10720	6176.8	7.71
131.11798	2714.6	3.39
131.14175	857.6	1.07
132.84309	813.7	1.02
153.39513	922.0	1.15
161.60904	992.3	1.24
165.23145	1045.6	1.31
172.18089	23416.2	29.23
175.88674	1010.0	1.26
183.71310	1112.6	1.39
184.22012	841.0	1.05
192.10201	11635.1	14.52
205.20242	1499.0	1.87
240.13578	984.4	1.23
243.40278	1125.8	1.41
249.05303	1055.3	1.32
251.32521	963.6	1.20
251.35717	1030.9	1.29
265.15557	17108.8	21.36
271.48088	1078.5	1.35
276.27532	3027.9	3.78
280.32247	1155.9	1.44
286.07828	985.8	1.23
303.25243	1301.2	1.62
322.21264	28548.0	35.64
332.95720	1185.2	1.48
396.29693	80106.4	100.00



NL: 1.24E6  
 Hololenasp#2035 RT:  
 5.10 AV: 1 T: FTMS + p  
 ESI Full lock ms  
 [100.00-1500.00]

NL: 9.36E4  
 Hololenasp#2032-2046  
 RT: 5.09-5.12 AV: 3 F:  
 FTMS + p ESI d Full ms2  
 396.30@hcd35.00  
 [50.00-420.00]