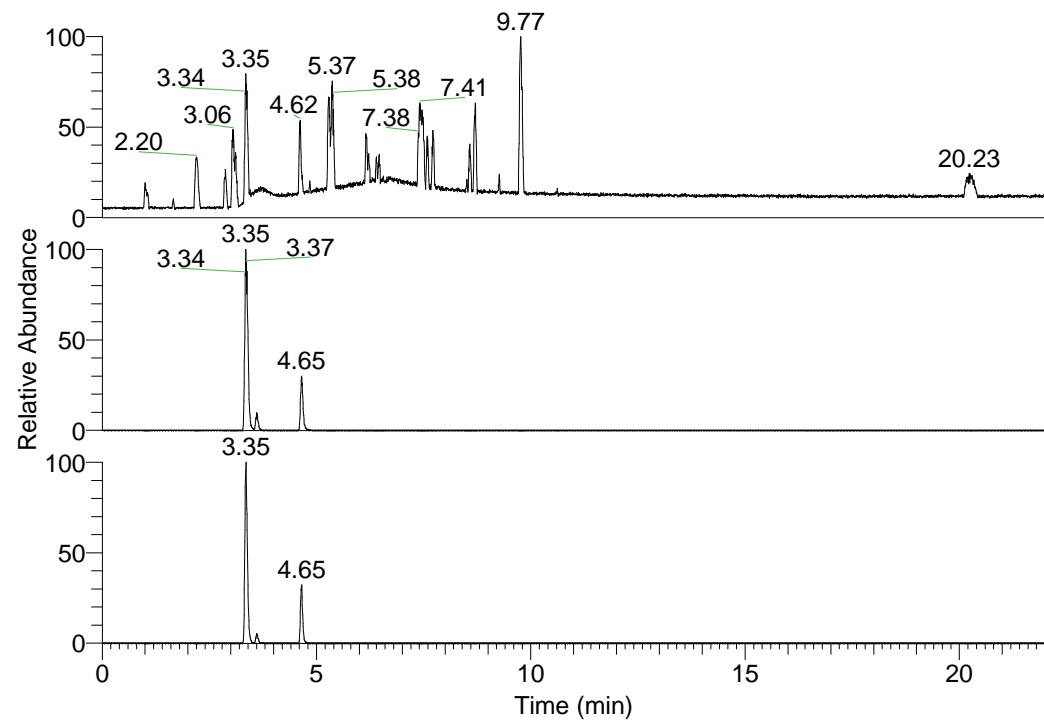


RT: 0.00 - 22.01



NL: 1.37E8
Base Peak m/z=
100.00000-1500.00000 F:
FTMS + p ESI Full ms
[100.00-1500.00] MS
Hololenasp_HDX

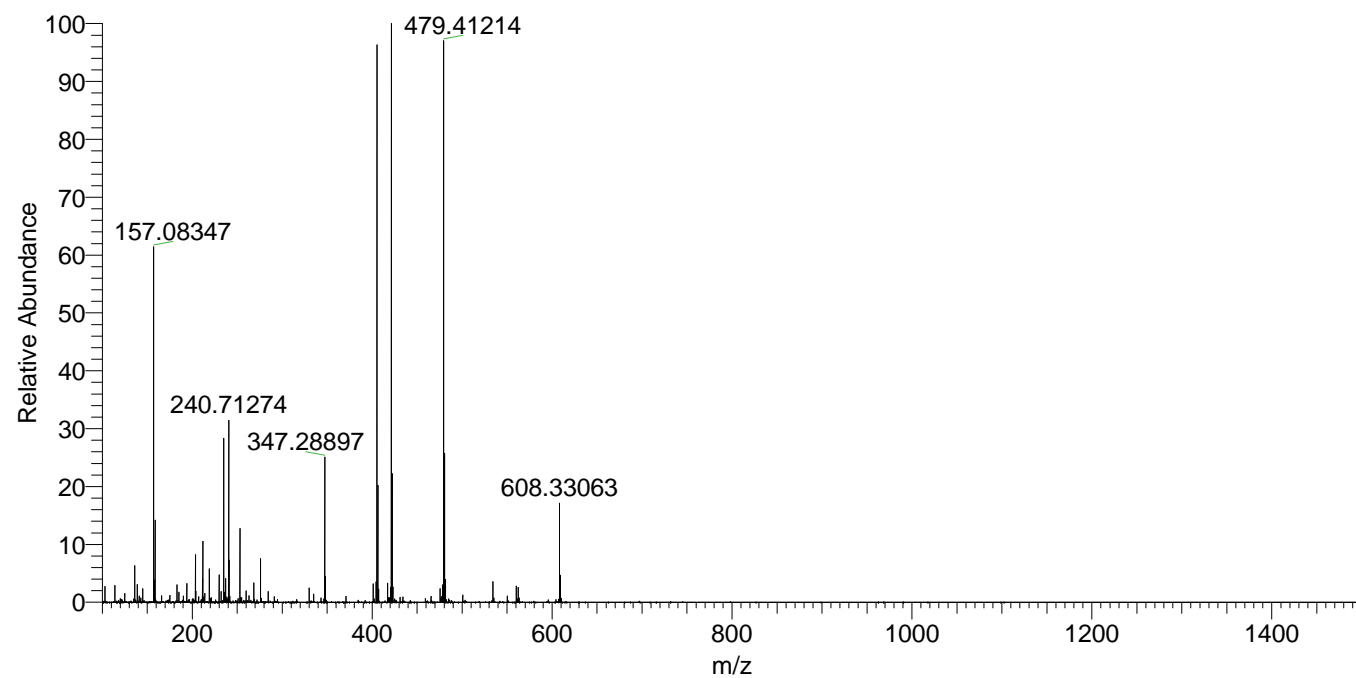
Hololenasp_HDX#727 RT: 4.65
T: FTMS + p ESI Full ms [100.00-1500.00]
m/z= 405.00000-406.00000

m/z	Intensity	Relative	Delta (ppm)	Composition
405.35315	32708848.0	100.00	-0.64	C ₂₀ H ₂₉ ² H ₉ O ₃ N ₅
			3.18	C ₂₀ H ₂₇ ² H ₁₀ O ₃ N ₅
			-4.46	C ₂₀ H ₃₁ ² H ₈ O ₃ N ₅

NL: 1.09E8
Base Peak m/z=
405.35193-405.35599 F: FTMS
+ p ESI Full ms
[100.00-1500.00] MS
Hololenasp_HDX

NL: 8.59E6
Base Peak m/z=
203.68301-203.68505 F: FTMS
+ p ESI Full ms
[100.00-1500.00] MS
Hololenasp_HDX

Hololenasp_HDX #727 RT: 4.65 AV: 1 NL: 3.32E7
T: FTMS + p ESI Full ms [100.00-1500.00]



Hololenasp_HDX #727 RT: 4.65 AV: 1 NL: 3.19E7
T: FTMS + p ESI Full ms [100.00-1500.00]

