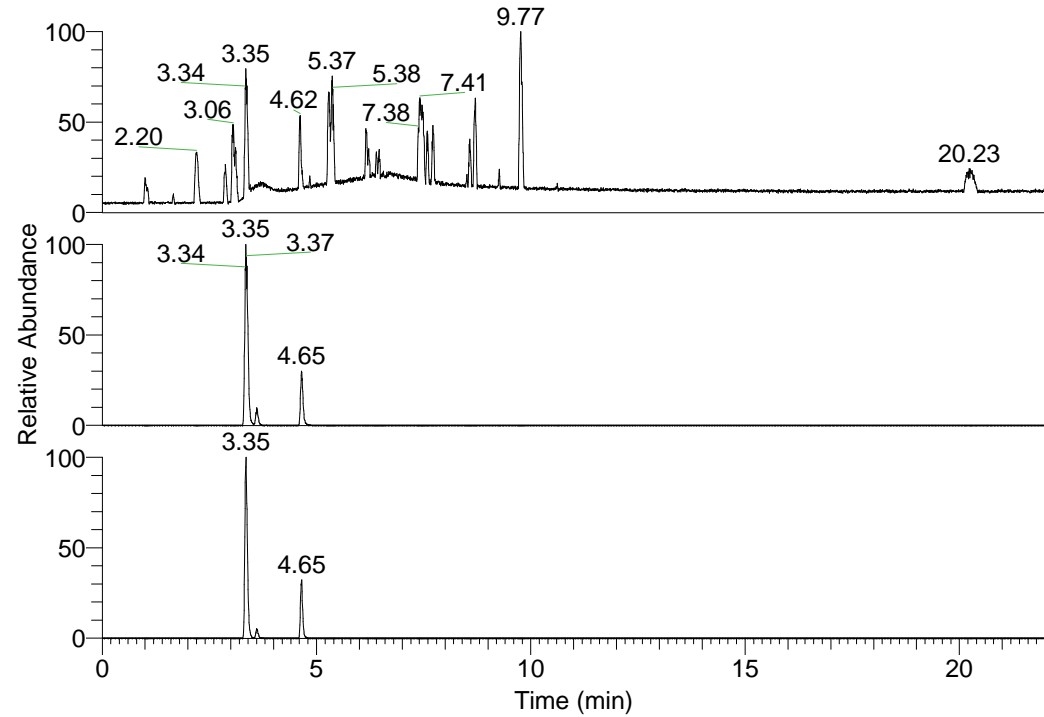


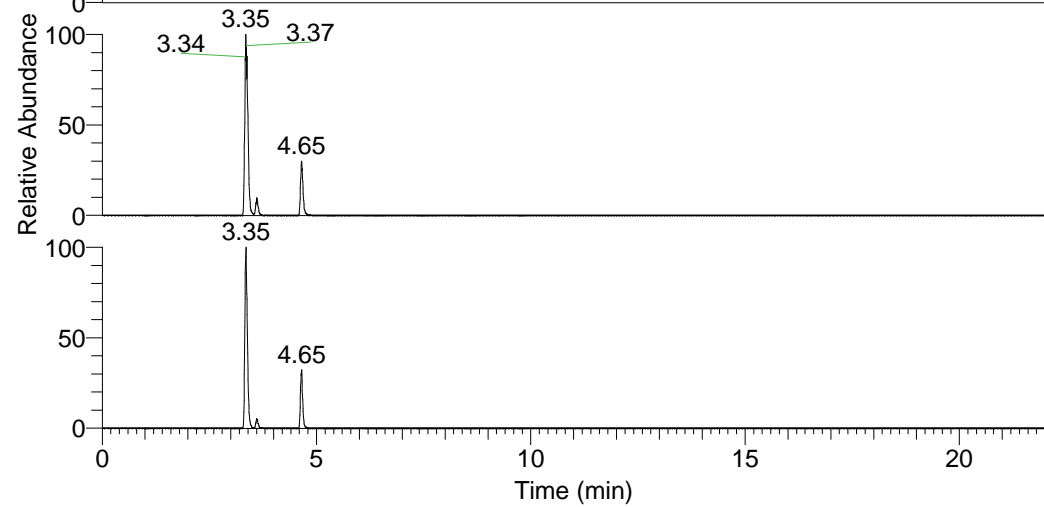
RT: 0.00 - 22.01



NL: 1.37E8
 Base Peak m/z=
 100.00000-1500.00000 F:
 FTMS + p ESI Full ms
 [100.00-1500.00] MS
 Hololenasp_HDX

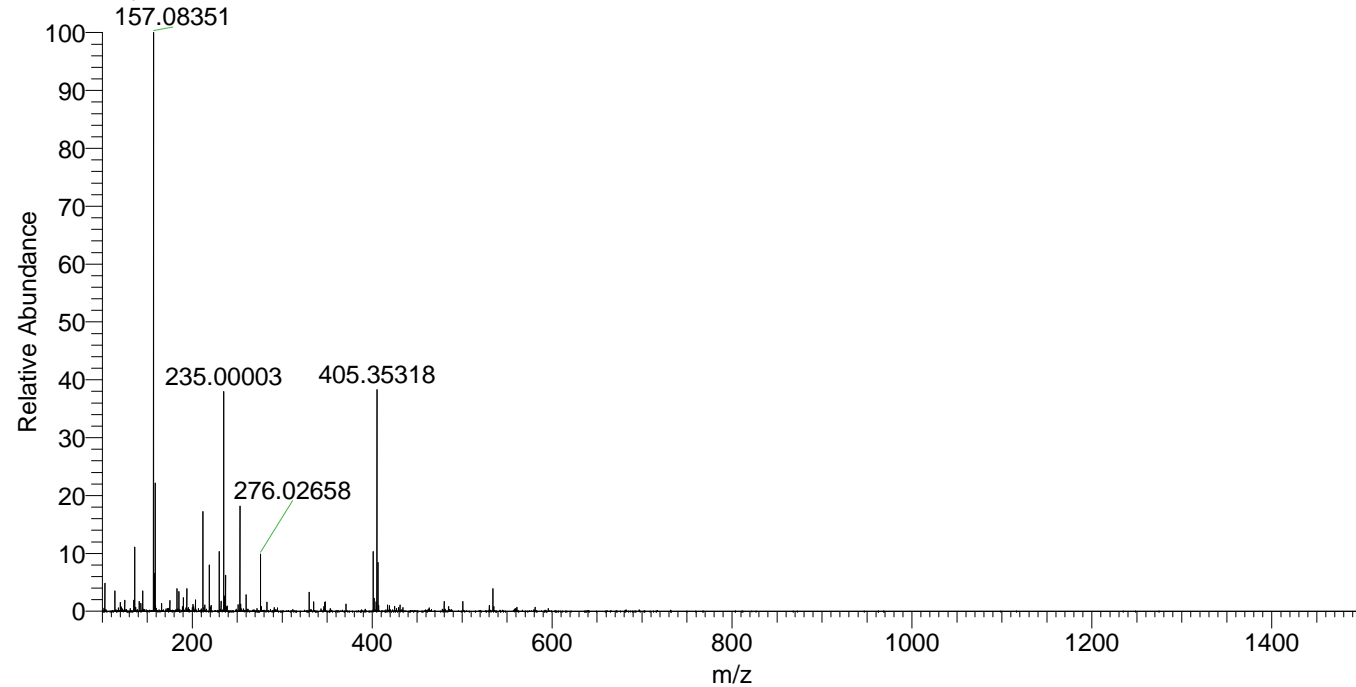
Hololenasp_HDX#555 RT: 3.60
 T: FTMS + p ESI Full ms [100.00-1500.00]
 m/z= 405.00000-406.00000

m/z	Intensity	Relative	Delta (ppm)	Composition
405.35318	7650008.0	100.00	-0.56	C ₂₀ H ₂₉ ² H ₉ O ₃ N ₅
			3.26	C ₂₀ H ₂₇ ² H ₁₀ O ₃ N ₅
			-4.38	C ₂₀ H ₃₁ ² H ₈ O ₃ N ₅



NL: 1.09E8
 Base Peak m/z=
 405.35193-405.35599 F: FTMS
 + p ESI Full ms
 [100.00-1500.00] MS
 Hololenasp_HDX

Hololenasp_HDX #555 RT: 3.60 AV: 1 NL: 1.91E7
 T: FTMS + p ESI Full ms [100.00-1500.00]



Hololenasp_HDX #555 RT: 3.60 AV: 1 NL: 7.30E6
 T: FTMS + p ESI Full ms [100.00-1500.00]

