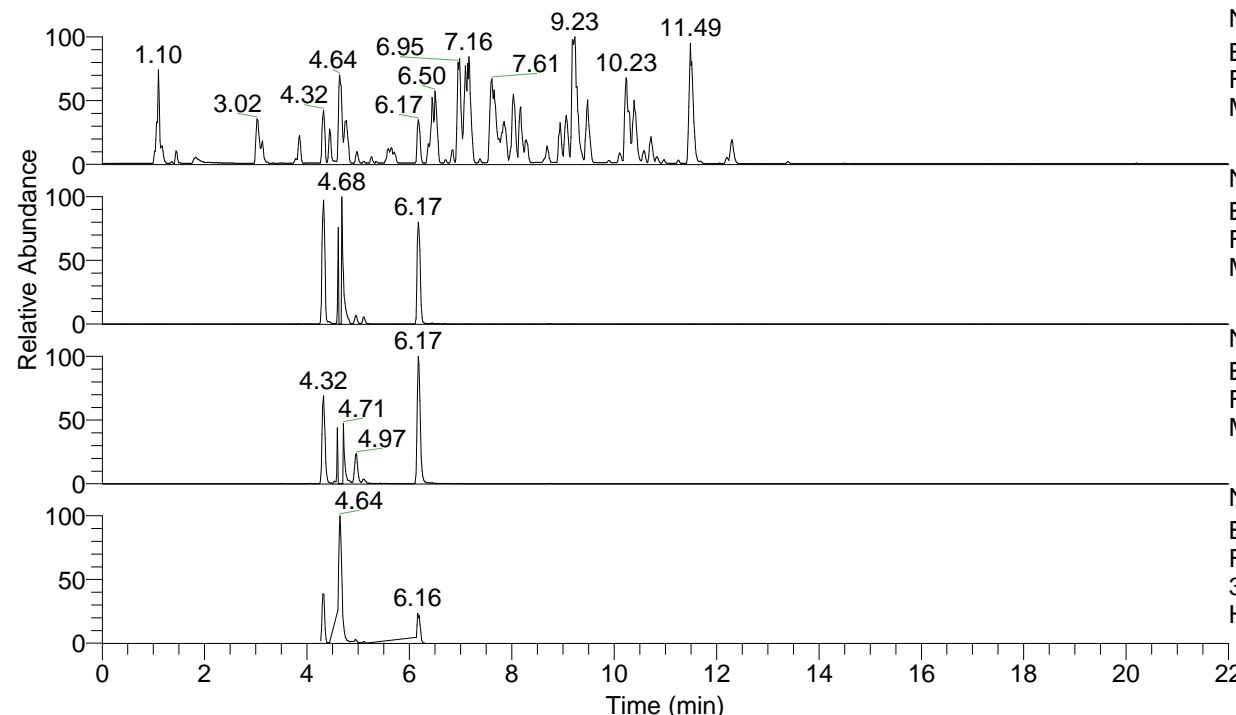


RT: 0.00 - 22.00



NL: 4.98E7  
 Base Peak m/z= 100.00000-1500.00000 F:  
 FTMS + p ESI Full ms [100.00-1500.00]  
 MS Hololenasp

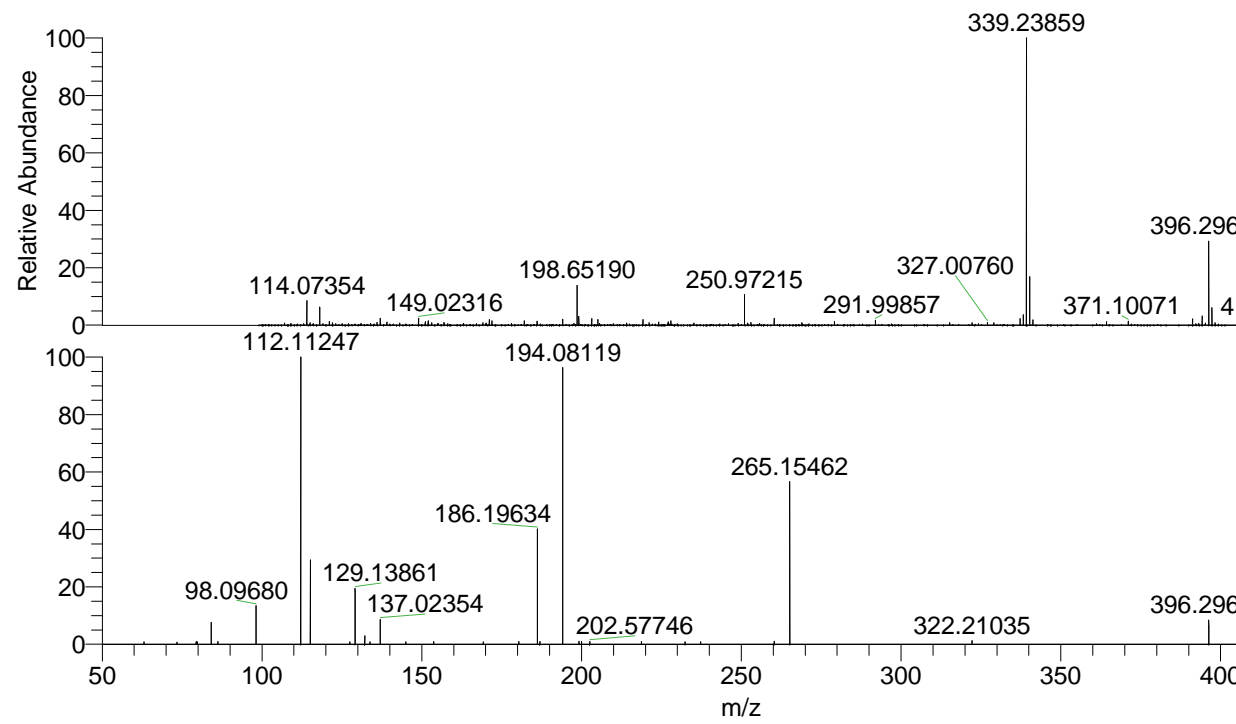
NL: 2.18E7  
 Base Peak m/z= 396.29549-396.29945 F:  
 FTMS + p ESI Full ms [100.00-1500.00]  
 MS Hololenasp

NL: 2.75E6  
 Base Peak m/z= 198.65166-198.65364 F:  
 FTMS + p ESI Full ms [100.00-1500.00]  
 MS Hololenasp

NL: 8.25E6  
 Base Peak m/z= 50.00000-1500.00000 F:  
 FTMS + p ESI d Full ms2  
 396.30@hcd35.00 [50.00-420.00] MS  
 Hololenasp

Hololenasp#1967-1977 RT: 4.93-4.96  
 F: FTMS + p ESI d Full ms2 396.30 ...  
 m/z= 50.00000-1000.00000

m/z	Intensity	Relative
63.03072	1223.6	0.64
64.59399	1081.4	0.57
66.34827	1104.6	0.58
69.61342	1079.3	0.57
73.41177	1011.7	0.53
79.43663	1201.2	0.63
79.48854	1165.7	0.61
79.67221	1247.9	0.66
79.84726	1109.6	0.58
81.77655	1085.1	0.57
84.08143	14250.0	7.50
86.16783	1325.1	0.70
89.30419	1146.3	0.60
98.09686	28228.3	14.85
112.11244	190126.5	100.00
115.12330	55352.1	29.11
127.46647	1181.8	0.62
129.13869	38726.8	20.37
132.14951	6212.3	3.27
133.79554	1223.3	0.64
137.02367	15232.7	8.01
145.03067	1206.0	0.63
151.51467	1078.2	0.57
151.82105	1149.9	0.60
153.71033	1317.7	0.69
162.01101	1286.5	0.68
165.18430	1176.0	0.62
169.29587	1188.9	0.63
180.37476	1435.7	0.76
186.19628	74231.9	39.04
186.94657	1365.4	0.72
187.51064	1194.1	0.63
194.08116	182207.3	95.83
199.19516	1462.3	0.77
200.00591	1319.3	0.69
202.57756	1419.6	0.75
207.83336	1241.5	0.65
218.75924	1357.0	0.71
232.41633	1214.1	0.64
237.25704	1285.4	0.68
240.57465	1248.4	0.66
251.13979	1647.0	0.87
260.28158	1524.2	0.80
265.15472	105238.8	55.35
322.21280	3156.5	1.66
396.29610	17087.6	8.99



NL: 4.70E6  
 Hololenasp#1981 RT:  
 4.97 AV: 1 T: FTMS + p  
 ESI Full lock ms  
 [100.00-1500.00]

NL: 2.16E5  
 Hololenasp#1968-1982  
 RT: 4.94-4.96 AV: 2 F:  
 FTMS + p ESI d Full ms2  
 396.30@hcd35.00  
 [50.00-420.00]