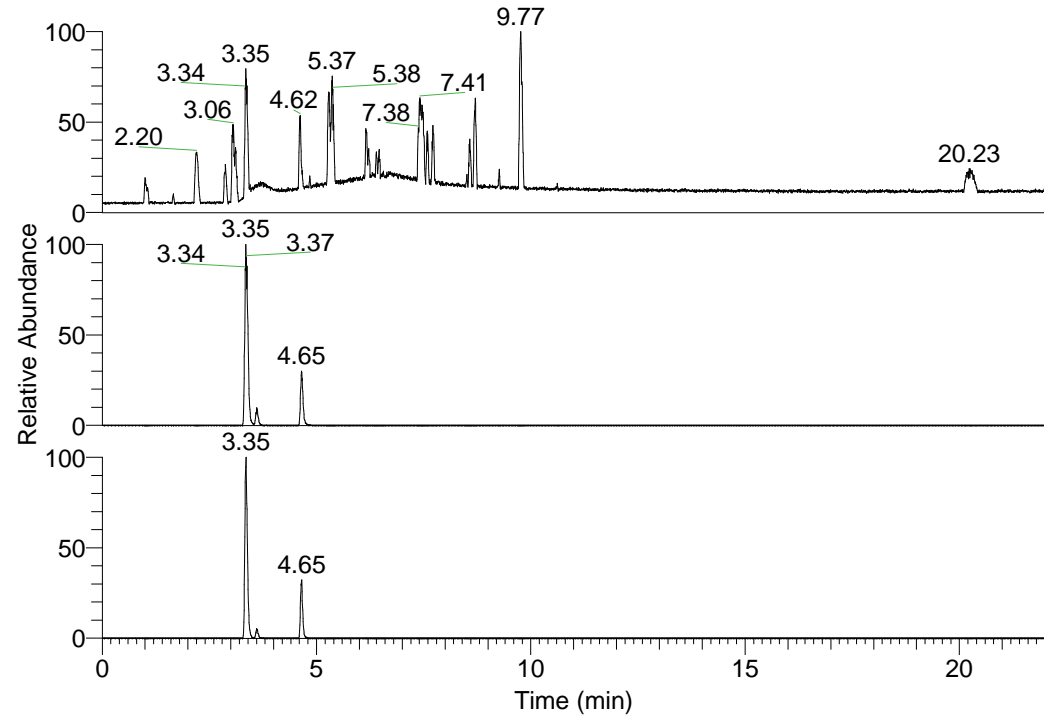


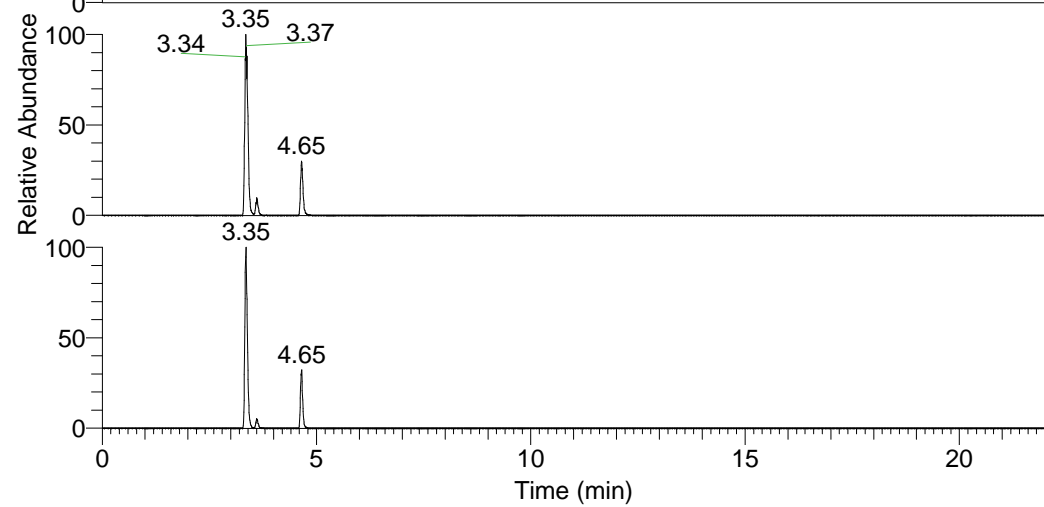
RT: 0.00 - 22.01



NL: 1.37E8  
Base Peak m/z=  
100.00000-1500.00000 F:  
FTMS + p ESI Full ms  
[100.00-1500.00] MS  
Hololensp\_HDX

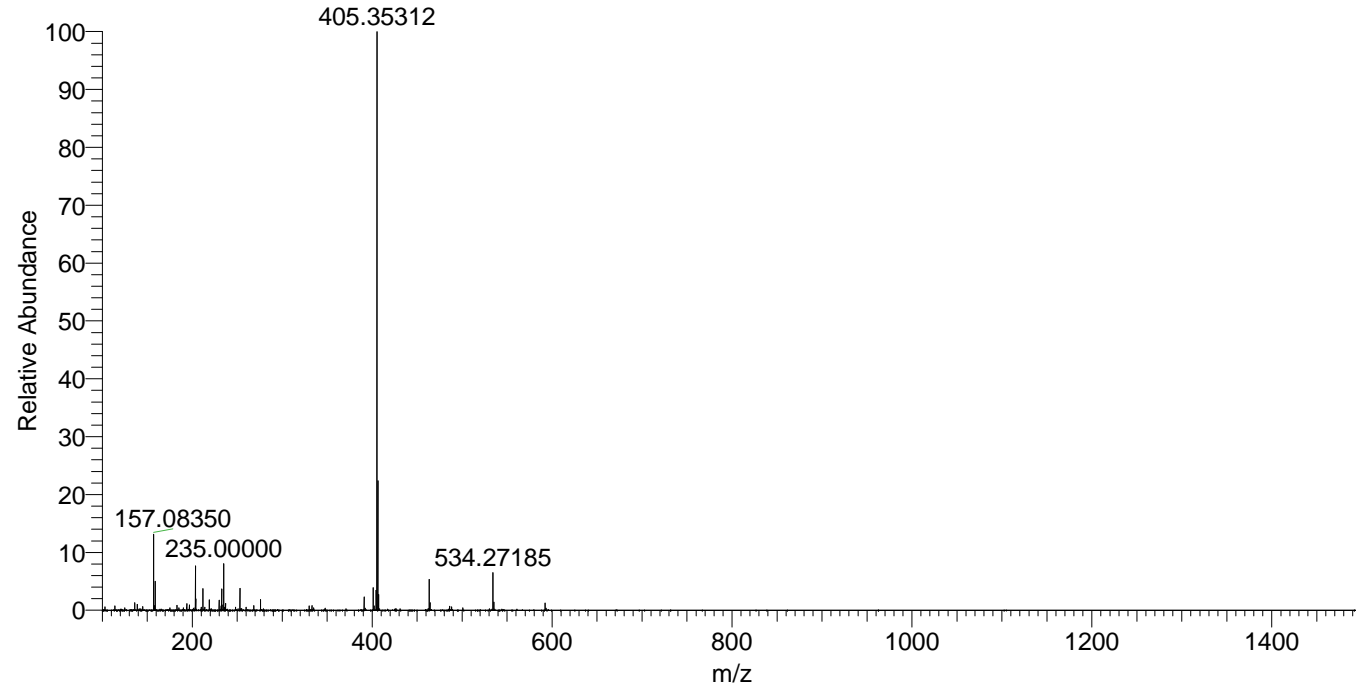
Hololensp\_HDX#513 RT: 3.35  
T: FTMS + p ESI Full ms [100.00-1500.00]  
m/z= 405.00000-406.00000

m/z	Intensity	Relative	Delta (ppm)	Composition
405.35312	108938504.0	100.00	-0.71	C <sub>20</sub> H <sub>29</sub> <sup>2</sup> H <sub>9</sub> O <sub>3</sub> N <sub>5</sub>
			3.11	C <sub>20</sub> H <sub>27</sub> <sup>2</sup> H <sub>10</sub> O <sub>3</sub> N <sub>5</sub>
			-4.53	C <sub>20</sub> H <sub>31</sub> <sup>2</sup> H <sub>8</sub> O <sub>3</sub> N <sub>5</sub>



NL: 1.09E8  
Base Peak m/z=  
405.35193-405.35599 F: FTMS  
+ p ESI Full ms  
[100.00-1500.00] MS  
Hololensp\_HDX

Hololensp\_HDX #513 RT: 3.35 AV: 1 NL: 1.05E8  
T: FTMS + p ESI Full ms [100.00-1500.00]



Hololensp\_HDX #513 RT: 3.35 AV: 1 NL: 1.05E8  
T: FTMS + p ESI Full ms [100.00-1500.00]

