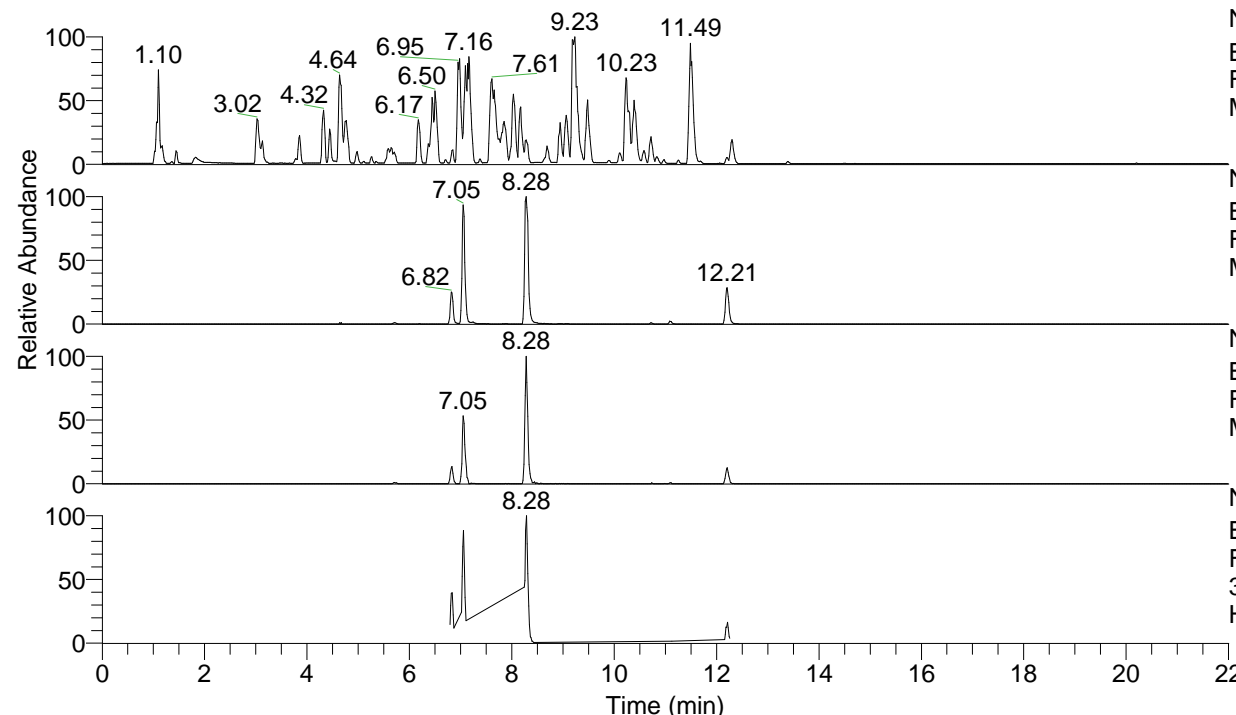


RT: 0.00 - 22.00



NL: 4.98E7  
 Base Peak m/z= 100.00000-1500.00000 F:  
 FTMS + p ESI Full ms [100.00-1500.00]  
 MS Hololenasp

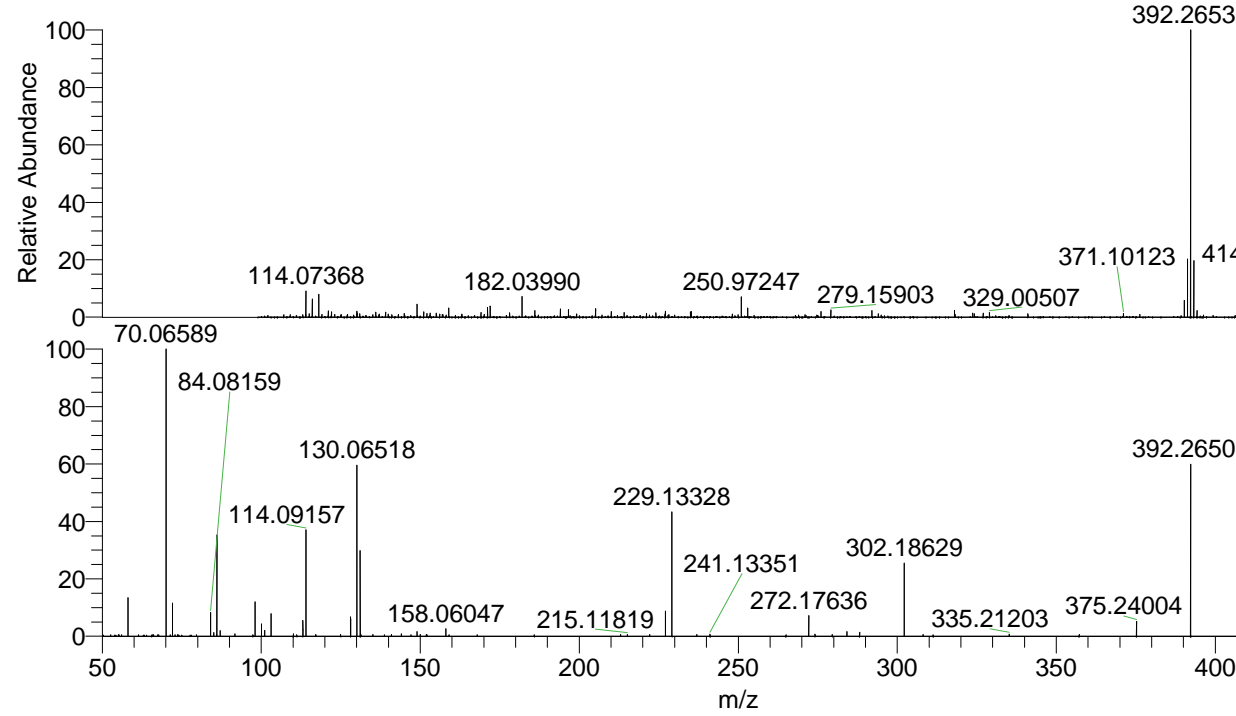
NL: 9.51E6  
 Base Peak m/z= 392.26420-392.26812 F:  
 FTMS + p ESI Full ms [100.00-1500.00]  
 MS Hololenasp

NL: 5.88E5  
 Base Peak m/z= 196.63602-196.63798 F:  
 FTMS + p ESI Full ms [100.00-1500.00]  
 MS Hololenasp

NL: 1.21E6  
 Base Peak m/z= 50.00000-1500.00000 F:  
 FTMS + p ESI d Full ms2  
 392.26@hcd35.00 [50.00-420.00] MS  
 Hololenasp

Hololenasp#4875-4898 RT: 12.17-12.23  
 F: FTMS + p ESI d Full ms2 392.26 ...  
 m/z= 50.00000-1000.00000

m/z	Intensity	Relative
55.25194	755.5	0.54
56.12581	747.8	0.53
58.06595	18827.7	13.44
65.60197	746.5	0.53
65.98763	770.0	0.55
67.78785	758.1	0.54
70.06589	140128.4	100.00
72.08153	16775.3	11.97
84.08159	11820.8	8.44
85.07668	1811.4	1.29
86.06062	49892.4	35.60
87.09227	2737.7	1.95
91.75279	813.9	0.58
91.75802	1176.9	0.84
98.09716	17040.6	12.16
100.07623	6006.3	4.29
101.10788	2962.0	2.11
103.08731	11367.3	8.11
110.09710	1190.3	0.85
113.10789	7739.3	5.52
114.09157	52377.6	37.38
124.97994	828.0	0.59
128.10738	9460.7	6.75
130.06518	84589.0	60.37
131.11809	41749.4	29.79
135.13289	833.8	0.60
140.91896	846.6	0.60
144.08132	1103.0	0.79
149.02403	2308.2	1.65
150.02655	794.1	0.57
151.91271	882.5	0.63
158.06047	3709.9	2.65
167.93514	775.9	0.55
185.86994	773.5	0.55
213.00939	877.9	0.63
215.11819	896.8	0.64
222.13813	824.8	0.59
227.11821	12520.3	8.93
229.13328	61095.6	43.60
236.95858	897.2	0.64
241.13351	1087.9	0.78
265.01750	757.9	0.54
272.17636	10230.7	7.30
274.15135	1039.2	0.74
279.56743	805.6	0.57
284.17639	2207.0	1.57
288.17021	1963.4	1.40
302.18629	35766.8	25.52
308.13055	826.7	0.59
311.28336	774.9	0.55
335.21203	1009.7	0.72
357.22699	922.0	0.66
375.24004	7243.5	5.17
392.26501	83911.8	59.88
392.31371	866.2	0.62



NL: 2.71E6  
 Hololenasp#4891 RT:  
 12.21 AV: 1 T: FTMS + p  
 ESI Full lock ms  
 [100.00-1500.00]

NL: 1.40E5  
 Hololenasp#4872-4903  
 RT: 12.17-12.23 AV: 5 F:  
 FTMS + p ESI d Full ms2  
 392.26@hcd35.00  
 [50.00-420.00]