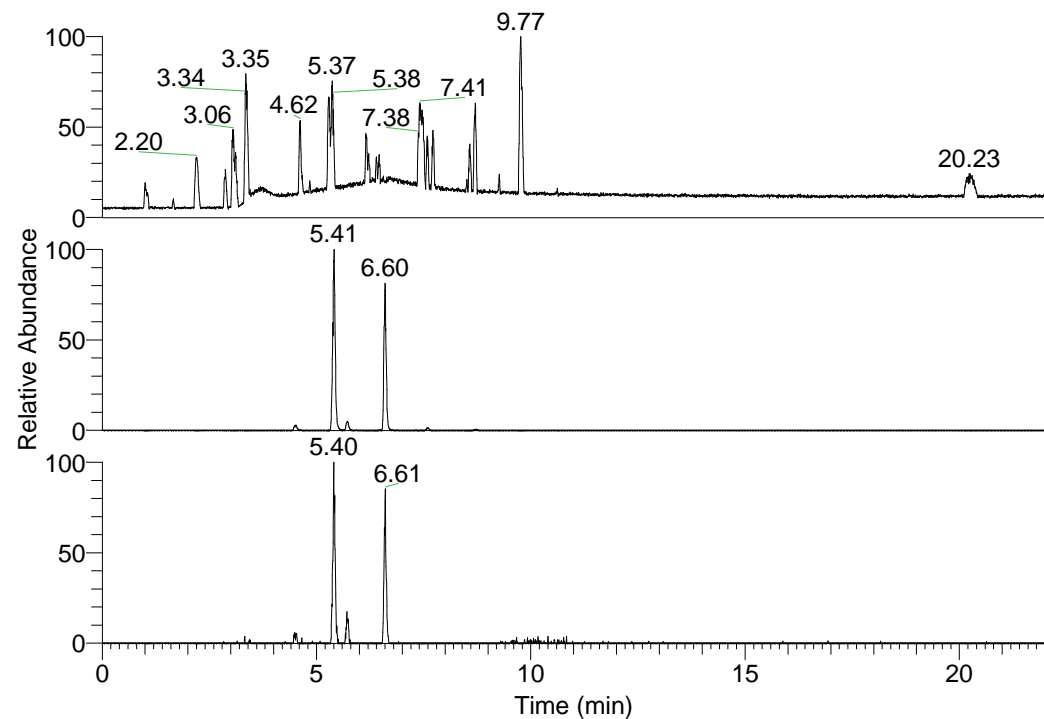


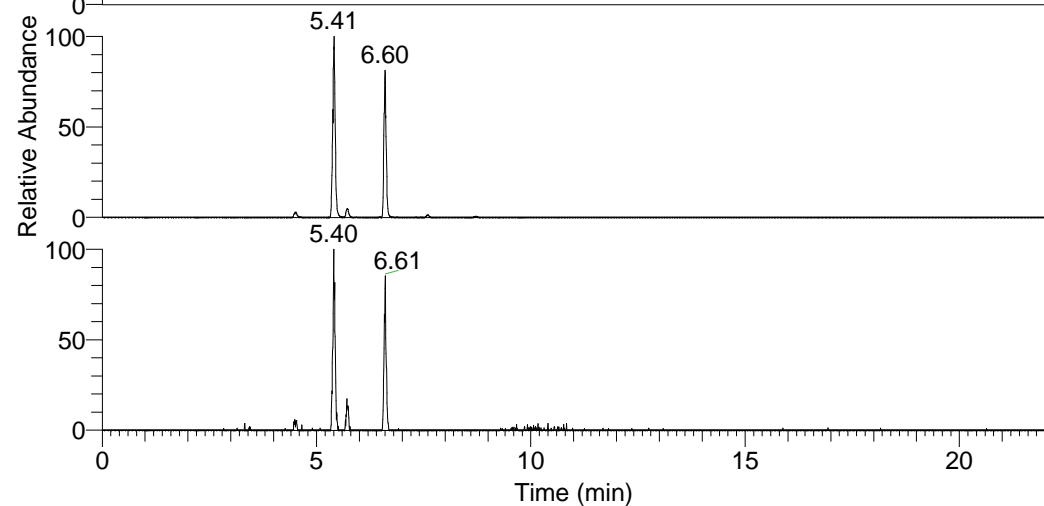
RT: 0.00 - 22.01



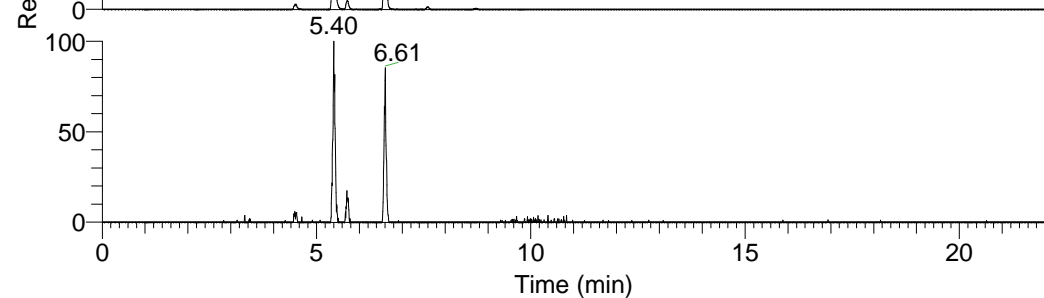
NL: 1.37E8
 Base Peak m/z=
 100.00000-1500.00000 F:
 FTMS + p ESI Full ms
 [100.00-1500.00] MS
 Hololenasp_HDX

Hololenasp_HDX#1056 RT: 6.60
 T: FTMS + p ESI Full ms [100.00-1500.00]
 m/z = 400.00000-401.00000

m/z	Intensity	Relative	Delta (ppm)	Composition
400.31567	20353518.0	100.00	-0.39	C ₂₀ H ₂₆ ² H ₈ O ₃ N ₅
			3.48	C ₂₀ H ₂₄ ² H ₉ O ₃ N ₅
			-4.26	C ₂₀ H ₂₈ ² H ₇ O ₃ N ₅

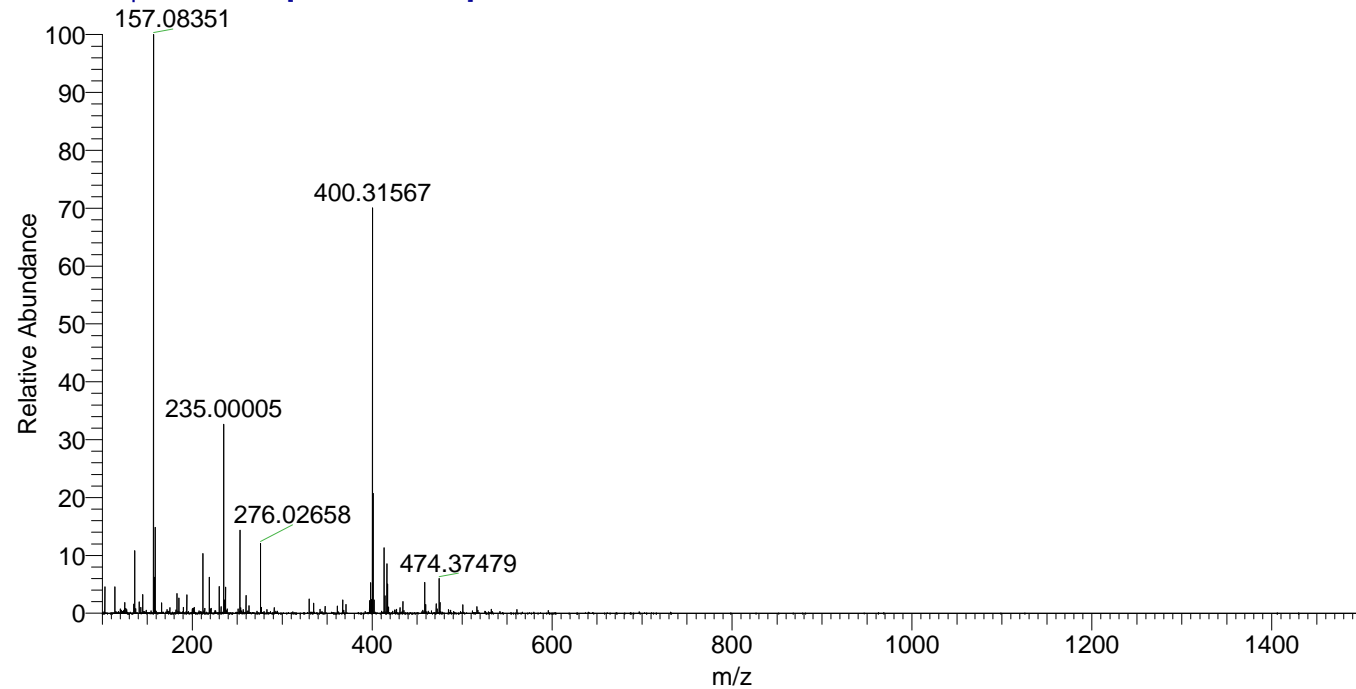


NL: 2.50E7
 Base Peak m/z=
 400.31438-400.31838 F: FTMS
 + p ESI Full ms
 [100.00-1500.00] MS
 Hololenasp_HDX



NL: 3.04E5
 Base Peak m/z=
 201.16423-201.16625 F: FTMS
 + p ESI Full ms
 [100.00-1500.00] MS
 Hololenasp_HDX

Hololenasp_HDX #1056 RT: 6.60 AV: 1 NL: 2.76E7
 T: FTMS + p ESI Full ms [100.00-1500.00]



Hololenasp_HDX #1056 RT: 6.60 AV: 1 NL: 1.93E7
 T: FTMS + p ESI Full ms [100.00-1500.00]

