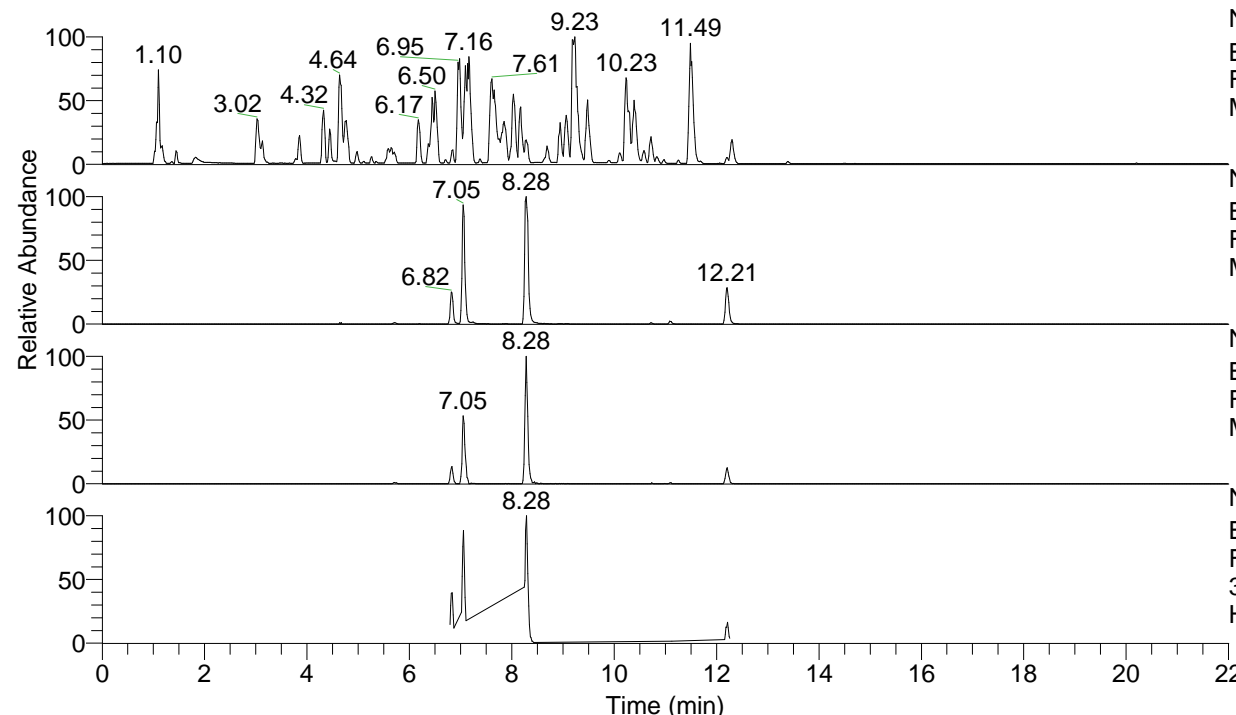


RT: 0.00 - 22.00



NL: 4.98E7
 Base Peak m/z= 100.00000-1500.00000 F:
 FTMS + p ESI Full ms [100.00-1500.00]
 MS Hololenasp

NL: 9.51E6
 Base Peak m/z= 392.26420-392.26812 F:
 FTMS + p ESI Full ms [100.00-1500.00]
 MS Hololenasp

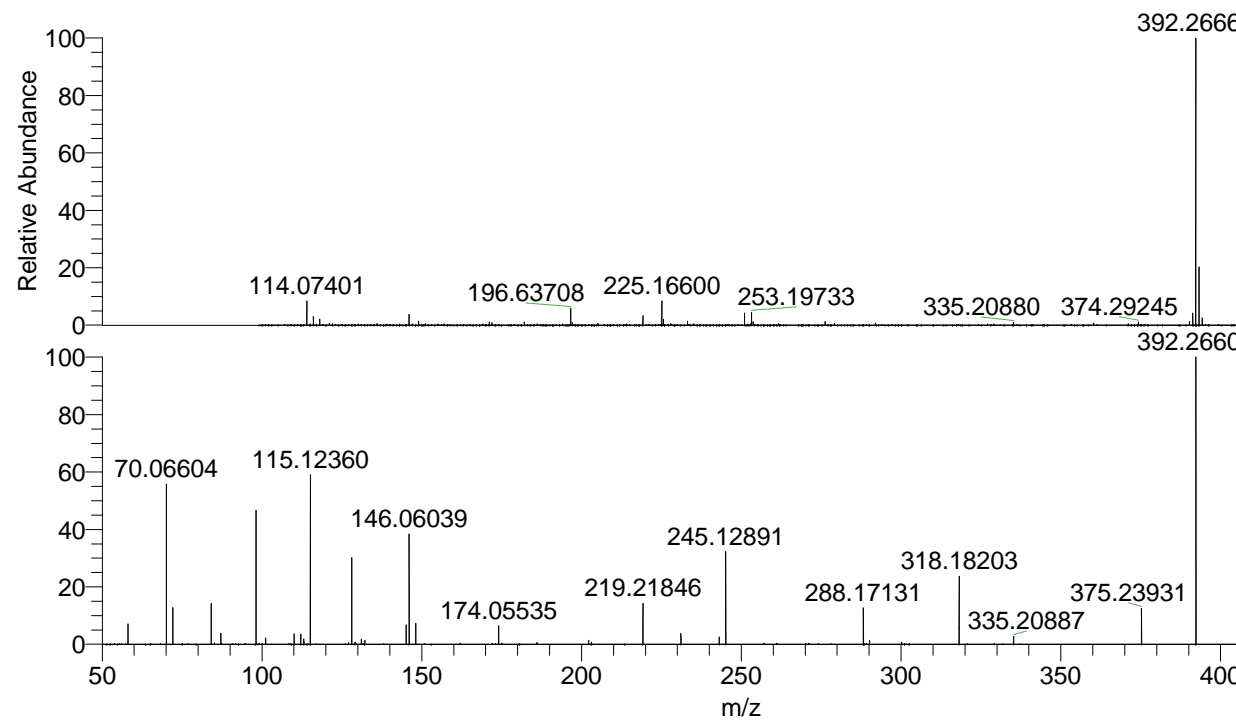
NL: 5.88E5
 Base Peak m/z= 196.63602-196.63798 F:
 FTMS + p ESI Full ms [100.00-1500.00]
 MS Hololenasp

NL: 1.21E6
 Base Peak m/z= 50.00000-1500.00000 F:
 FTMS + p ESI d Full ms2
 392.26@hcd35.00 [50.00-420.00] MS
 Hololenasp

Hololenasp#3304-3326 RT: 8.26-8.31

F: FTMS + p ESI d Full ms2 392.26 ...
 m/z= 50.00000-1000.00000

m/z	Intensity	Relative
58.06609	59355.1	7.07
70.06604	465244.0	55.40
72.08166	109956.2	13.09
84.08159	118380.9	14.10
87.09245	32502.9	3.87
98.09717	401771.1	47.84
101.10804	17921.0	2.13
110.09698	30799.2	3.67
112.11271	29172.5	3.47
113.10804	15186.9	1.81
115.12360	497553.7	59.25
127.12350	5498.6	0.65
128.10746	251781.9	29.98
129.13921	5746.3	0.68
131.11826	14351.3	1.71
132.14994	11453.2	1.36
145.13384	57277.0	6.82
146.06039	326428.7	38.87
148.14471	61179.6	7.29
174.05535	53770.8	6.40
186.05583	5357.2	0.64
202.19219	11694.7	1.39
203.08250	5733.1	0.68
219.21846	121305.6	14.44
231.11344	30981.0	3.69
243.11360	21313.3	2.54
245.12891	269155.3	32.05
288.17131	106113.9	12.64
290.15102	10407.8	1.24
300.17087	6483.4	0.77
318.18203	199279.5	23.73
335.20887	23039.6	2.74
375.23931	104875.8	12.49
392.26604	839792.4	100.00



NL: 9.49E6
 Hololenasp#3313 RT:
 8.28 AV: 1 T: FTMS + p
 ESI Full ms
 [100.00-1500.00]

NL: 8.34E5
 Hololenasp#3302-3327
 RT: 8.26-8.31 AV: 5 F:
 FTMS + p ESI d Full ms2
 392.26@hcd35.00
 [50.00-420.00]