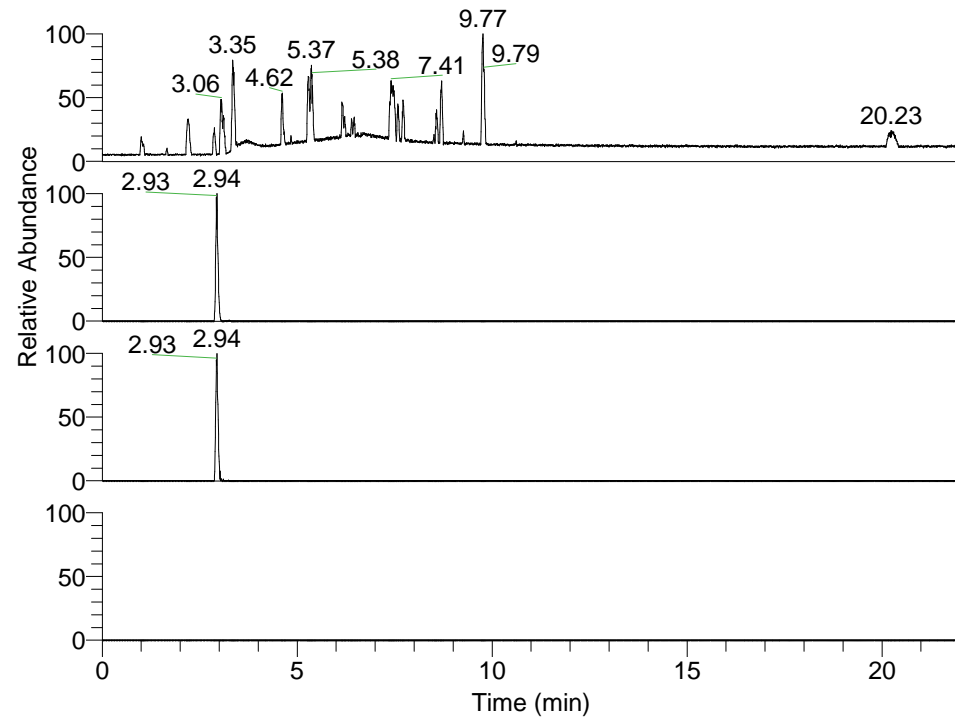


RT: 0.00 - 22.01



NL: 1.37E8  
Base Peak m/z=  
100.00000-1500.00000 F: FTMS + p  
ESI Full ms [100.00-1500.00] MS  
Hololenasp\_HDX

NL: 9.85E5  
Base Peak m/z= 383.33049-383.33433  
F: FTMS + p ESI Full ms  
[100.00-1500.00] MS Hololenasp\_HDX

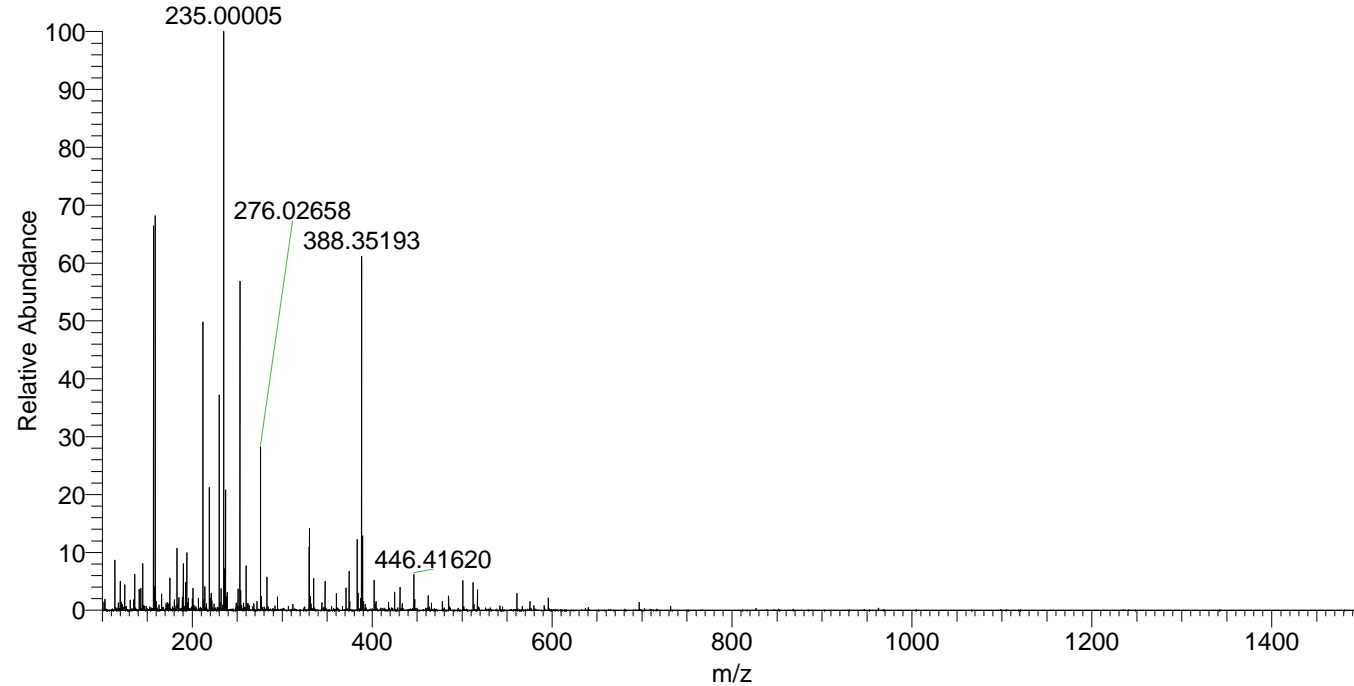
NL: 3.72E5  
Base Peak m/z= 192.67230-192.67422  
F: FTMS + p ESI Full ms  
[100.00-1500.00] MS Hololenasp\_HDX

NL: 0  
Base Peak m/z= 498.32906-498.33404  
F: FTMS + p ESI Full ms  
[100.00-1500.00] MS Hololenasp\_HDX

Hololenasp\_HDX#446 RT: 2.94  
T: FTMS + p ESI Full ms [100.00-1500.00]  
m/z= 383.00000-384.00000

| m/z       | Intensity | Relative | Delta (ppm) | Composition   |
|-----------|-----------|----------|-------------|---|
| 383.33167 | 985120.9  | 100.00   | -0.51       | C <sub>21</sub> H <sub>35</sub> <sup>2</sup> H <sub>4</sub> O <sub>2</sub> N <sub>4</sub> |
|           |           |          | 3.53        | C <sub>21</sub> H <sub>33</sub> <sup>2</sup> H <sub>5</sub> O <sub>2</sub> N <sub>4</sub> |
|           |           |          | -4.55       | C <sub>21</sub> H <sub>37</sub> <sup>2</sup> H <sub>3</sub> O <sub>2</sub> N <sub>4</sub> |

Hololenasp\_HDX #446 RT: 2.94 AV: 1 NL: 7.58E6  
T: FTMS + p ESI Full ms [100.00-1500.00]



Hololenasp\_HDX #446 RT: 2.94 AV: 1 NL: 4.64E6  
T: FTMS + p ESI Full ms [100.00-1500.00]

