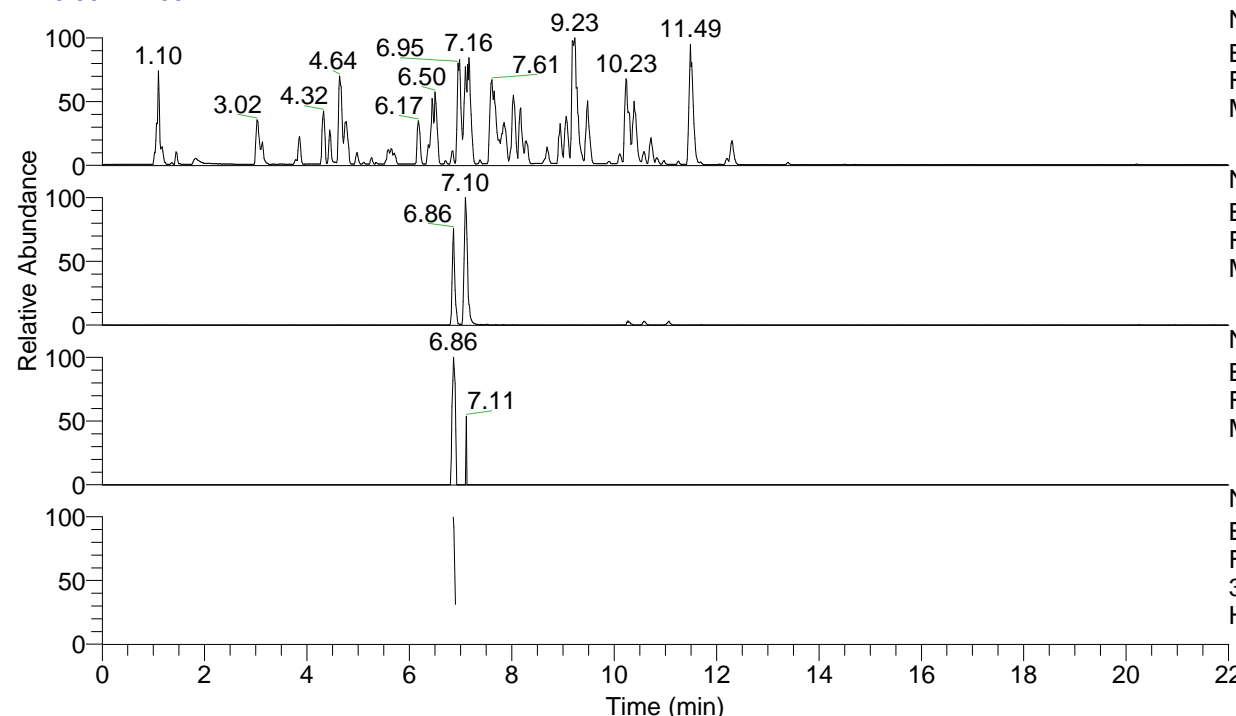


RT: 0.00 - 22.00



NL: 4.98E7
 Base Peak m/z= 100.00000-1500.00000 F:
 FTMS + p ESI Full ms [100.00-1500.00]
 MS Hololenasp

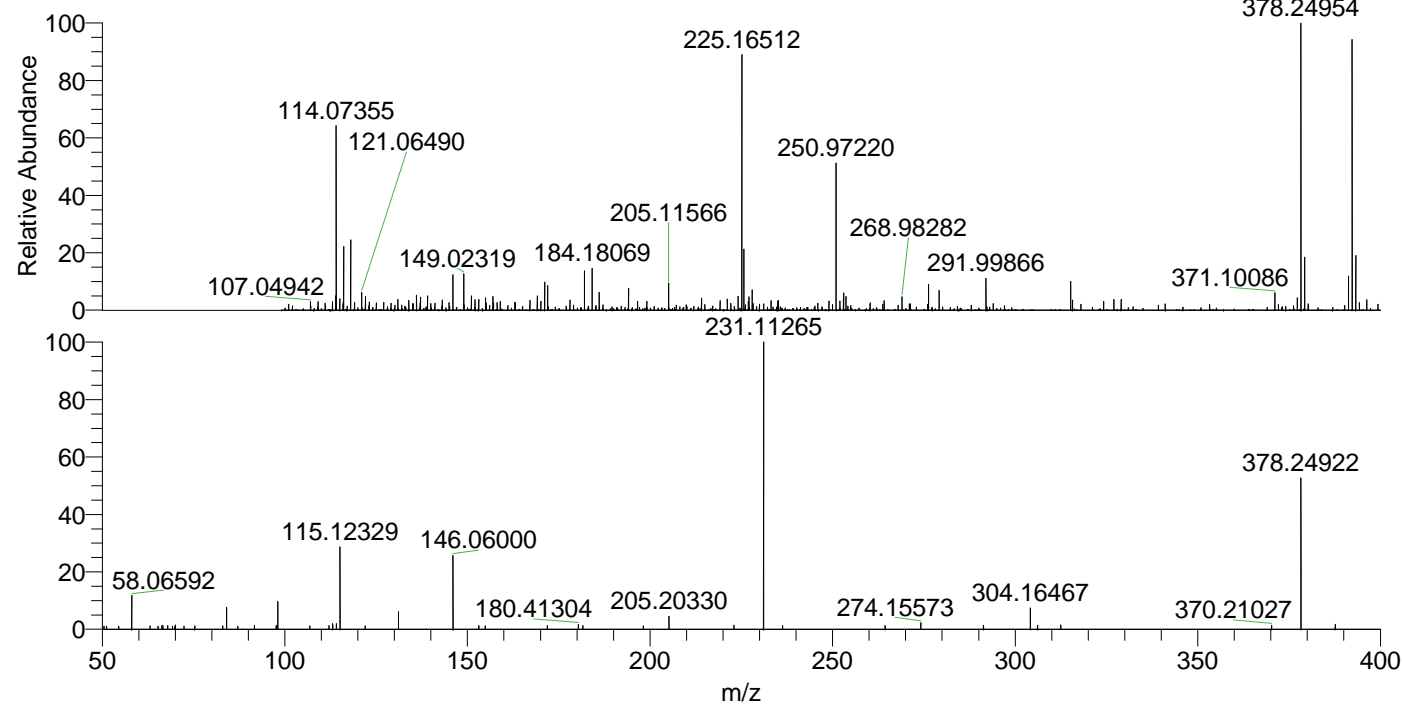
NL: 1.22E6
 Base Peak m/z= 378.24862-378.25240 F:
 FTMS + p ESI Full ms [100.00-1500.00]
 MS Hololenasp

NL: 1.08E4
 Base Peak m/z= 189.62822-189.63012 F:
 FTMS + p ESI Full ms [100.00-1500.00]
 MS Hololenasp

NL: 1.14E5
 Base Peak m/z= 50.00000-1500.00000 F:
 FTMS + p ESI d Full ms2
 378.25@hcd35.00 [50.00-405.00] MS
 Hololenasp

Hololenasp#2735-2745 RT: 6.86-6.88
 F: FTMS + p ESI d Full ms2 378.25 ...
 m/z= 50.00000-1000.00000

m/z	Intensity	Relative
50.52378	1005.1	1.06
51.21825	967.9	1.02
54.51648	1025.8	1.08
58.06592	11089.3	11.69
63.09960	1127.3	1.19
65.33419	1026.0	1.08
66.34917	1304.4	1.38
66.63682	1088.0	1.15
67.94052	1183.2	1.25
69.22046	978.9	1.03
69.85709	940.4	0.99
70.06573	1462.0	1.54
72.36047	1069.0	1.13
75.33498	1074.3	1.13
82.96621	1093.2	1.15
84.08136	7203.9	7.60
87.09202	1044.4	1.10
91.70193	1370.1	1.44
97.66352	1164.4	1.23
97.77274	1262.1	1.33
98.09676	9145.1	9.64
106.85425	1156.3	1.22
112.06475	1171.8	1.24
113.10834	1807.1	1.91
114.09137	1838.1	1.94
115.12329	27812.2	29.33
122.02638	1056.7	1.11
131.11793	5715.2	6.03
146.06000	25084.5	26.45
153.13803	1284.2	1.35
154.89788	1124.8	1.19
171.91306	1235.7	1.30
180.41304	1673.1	1.76
181.61302	1262.2	1.33
198.18610	1118.9	1.18
205.20330	4234.1	4.46
222.99493	1276.4	1.35
231.11265	94840.9	100.00
236.28545	1237.7	1.31
264.39671	1222.0	1.29
274.15573	2174.6	2.29
291.30750	1359.6	1.43
304.16467	7020.8	7.40
306.13248	1298.0	1.37
312.48931	1400.5	1.48
370.21027	1277.1	1.35
378.24922	50322.9	53.06
387.65264	1671.0	1.76
400.73625	1269.6	1.34
403.74943	1394.4	1.47



NL: 9.15E5
 Hololenasp#2737 RT:
 6.86 AV: 1 T: FTMS + p
 ESI Full lock ms
 [100.00-1500.00]

NL: 9.41E4
 Hololenasp#2732-2749
 RT: 6.86-6.88 AV: 3 F:
 FTMS + p ESI d Full ms2
 378.25@hcd35.00
 [50.00-405.00]