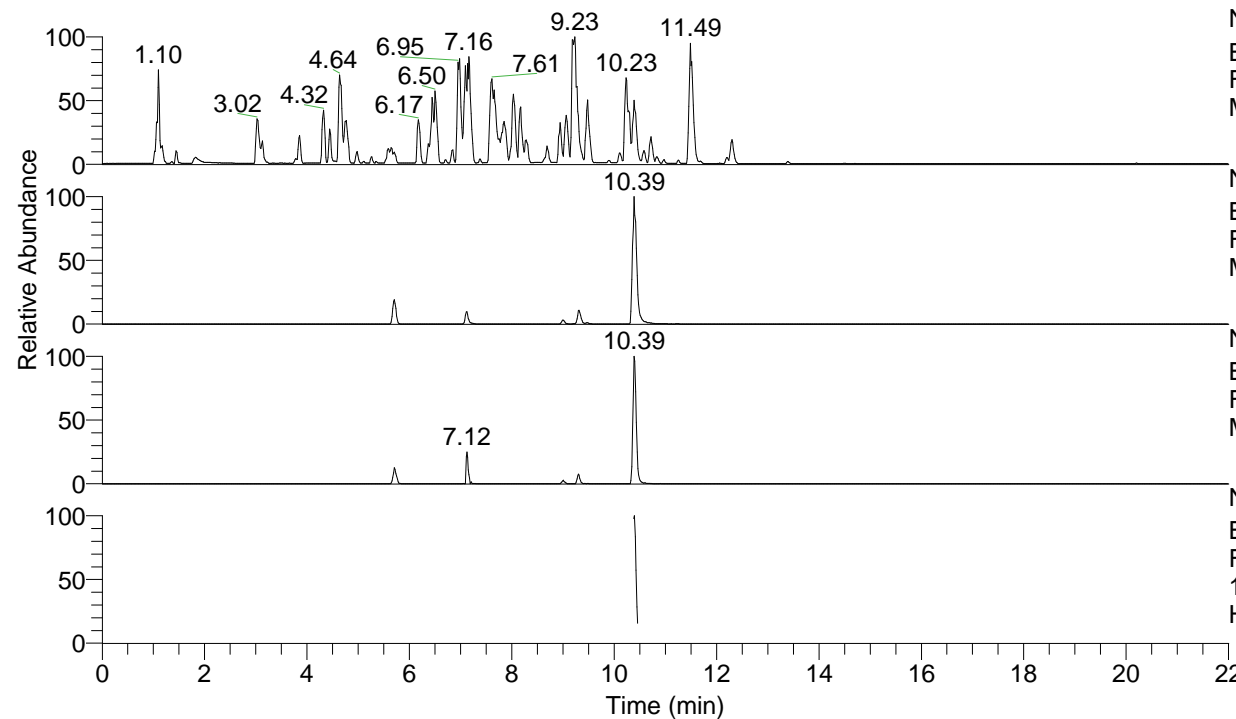


RT: 0.00 - 22.00



NL: 4.98E7  
 Base Peak m/z= 100.00000-1500.00000 F:  
 FTMS + p ESI Full ms [100.00-1500.00]  
 MS Hololenasp

NL: 2.50E7  
 Base Peak m/z= 376.26937-376.27313 F:  
 FTMS + p ESI Full ms [100.00-1500.00]  
 MS Hololenasp

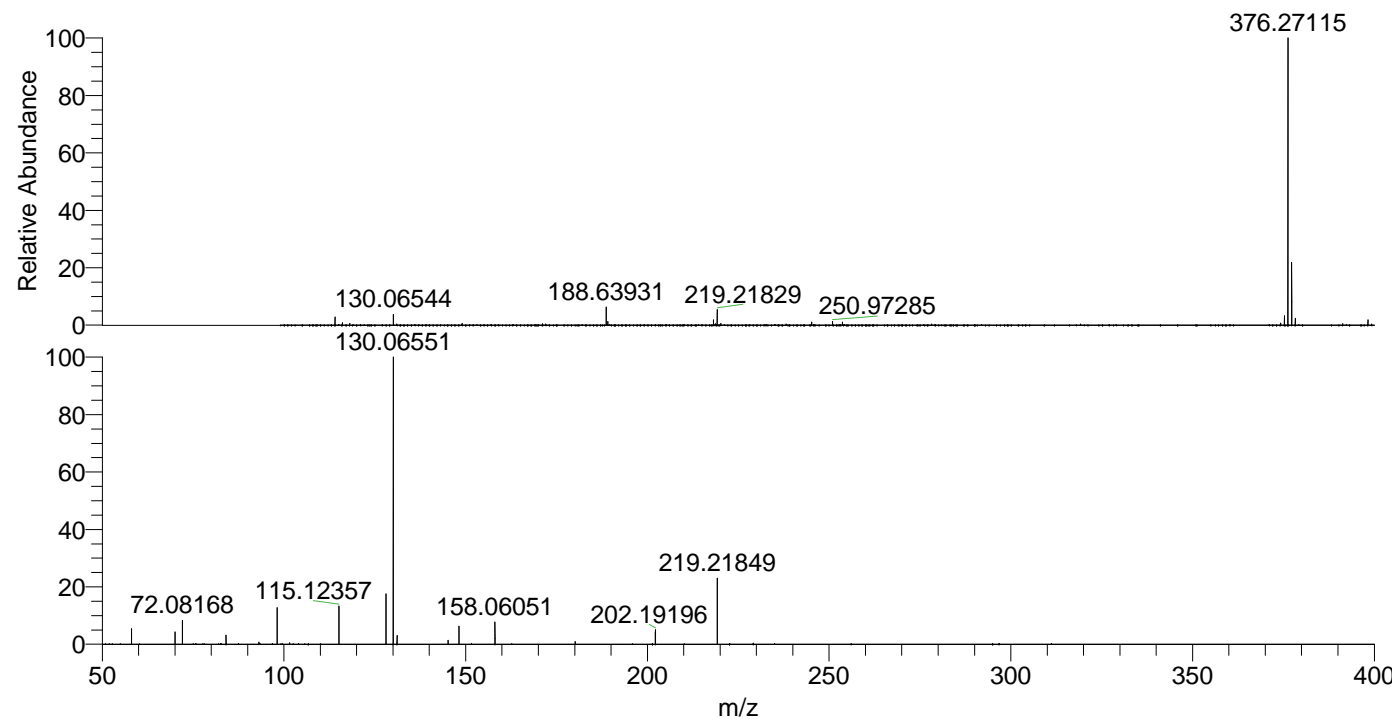
NL: 1.52E6  
 Base Peak m/z= 188.63860-188.64048 F:  
 FTMS + p ESI Full ms [100.00-1500.00]  
 MS Hololenasp

NL: 5.29E5  
 Base Peak m/z= 50.00000-1500.00000 F:  
 FTMS + p ESI d Full ms2  
 188.64@hcd35.00 [50.00-405.00] MS  
 Hololenasp

Hololenasp#4168-4180 RT: 10.40-10.43

F: FTMS + p ESI d Full ms2 188.64 ...

m/z	Intensity	Relative
58.06614	21600.6	5.33
70.06604	17241.9	4.26
72.08168	33787.7	8.34
84.08168	12860.9	3.18
93.08681	3018.3	0.75
98.09711	52439.3	12.95
115.12357	54062.9	13.35
128.10744	69958.8	17.28
130.06551	404921.1	100.00
131.06928	2722.7	0.67
131.11859	12379.4	3.06
145.13439	5562.7	1.37
148.14477	25017.8	6.18
158.06051	31183.1	7.70
180.12653	3740.4	0.92
202.19196	20418.4	5.04
219.21849	93514.6	23.09



NL: 2.41E7  
 Hololenasp#4165 RT:  
 10.39 AV: 1 T: FTMS + p  
 ESI Full ms  
 [100.00-1500.00]

NL: 3.98E5  
 Hololenasp#4163-4183  
 RT: 10.40-10.43 AV: 3 F:  
 FTMS + p ESI d Full ms2  
 188.64@hcd35.00  
 [50.00-405.00]