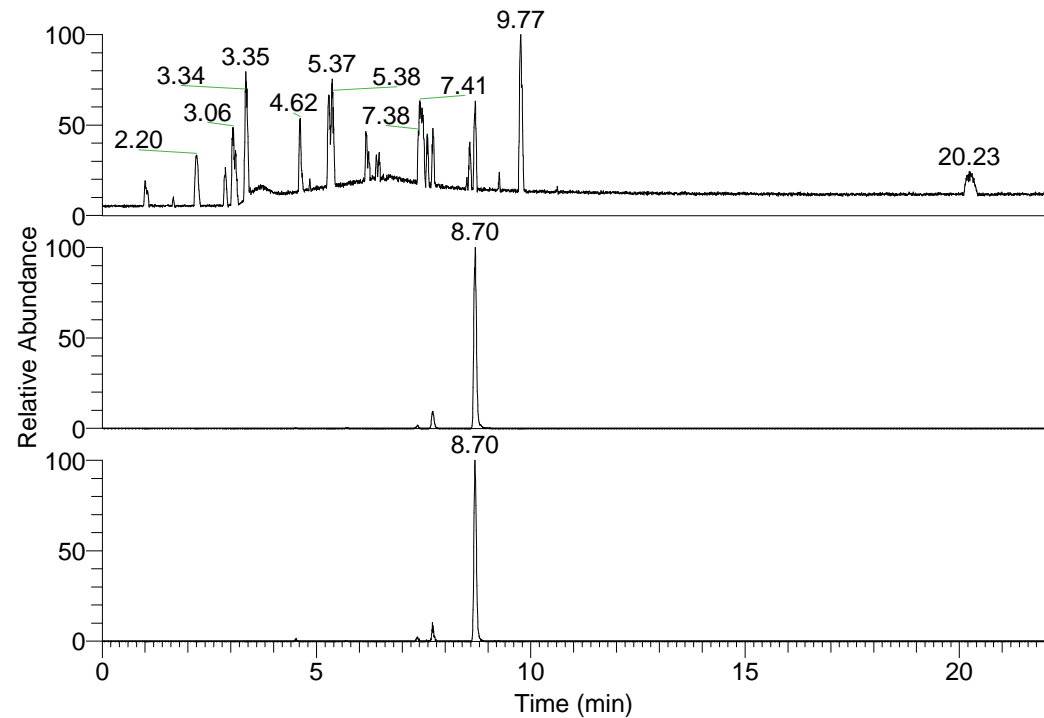


RT: 0.00 - 22.01



NL: 1.37E8
Base Peak m/z=
100.00000-1500.00000 F:
FTMS + p ESI Full ms
[100.00-1500.00] MS
Hololenasp_HDX

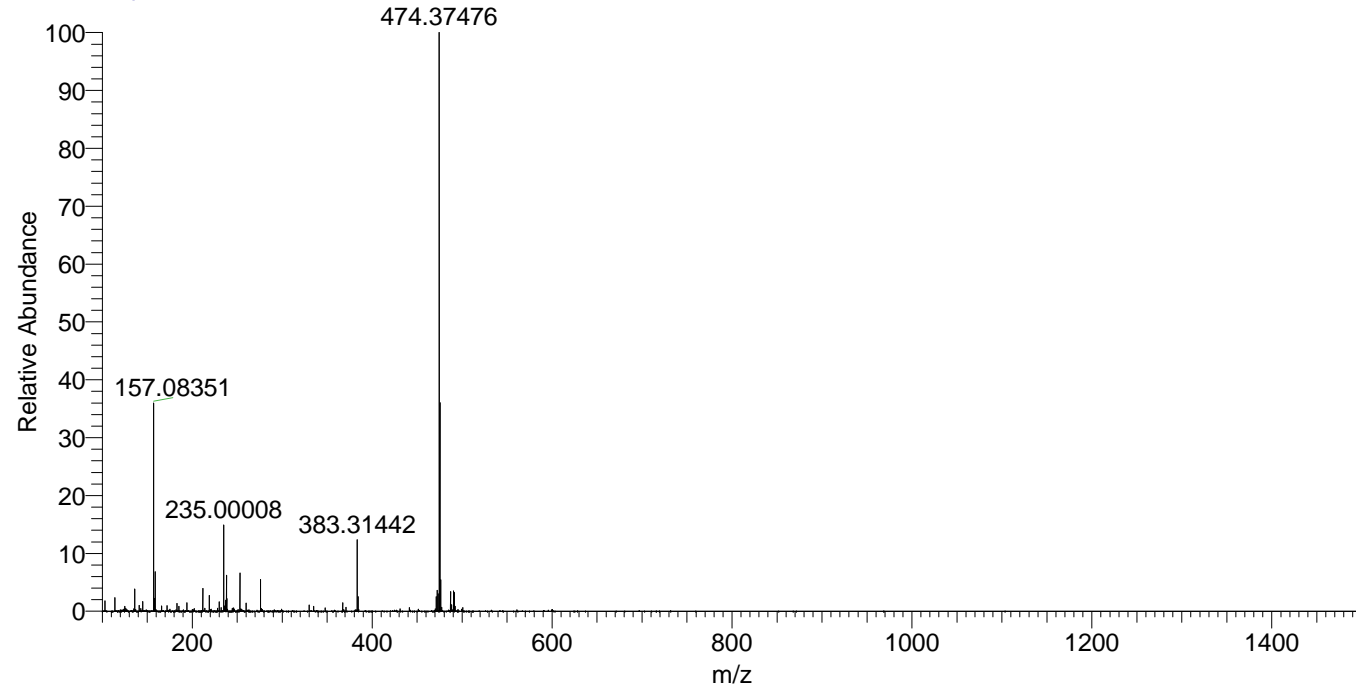
NL: 8.66E7
Base Peak m/z=
383.31327-383.31711 F: FTMS
+ p ESI Full ms
[100.00-1500.00] MS
Hololenasp_HDX

NL: 1.13E6
Base Peak m/z=
192.66369-192.66561 F: FTMS
+ p ESI Full ms
[100.00-1500.00] MS
Hololenasp_HDX

Hololenasp_HDX#1244 RT: 7.71
T: FTMS + p ESI Full ms [100.00-1500.00]
m/z= 383.00000-384.00000

m/z	Intensity	Relative	Delta (ppm)	Composition
383.31442	8222444.5	100.00	-0.56	C ₂₀ H ₂₇ ² H ₇ O ₂ N ₅
			3.47	C ₂₀ H ₂₅ ² H ₈ O ₂ N ₅
			-4.60	C ₂₀ H ₂₉ ² H ₆ O ₂ N ₅

Hololenasp_HDX #1244 RT: 7.71 AV: 1 NL: 6.56E7
T: FTMS + p ESI Full ms [100.00-1500.00]



Hololenasp_HDX #1244 RT: 7.71 AV: 1 NL: 8.11E6
T: FTMS + p ESI Full ms [100.00-1500.00]

