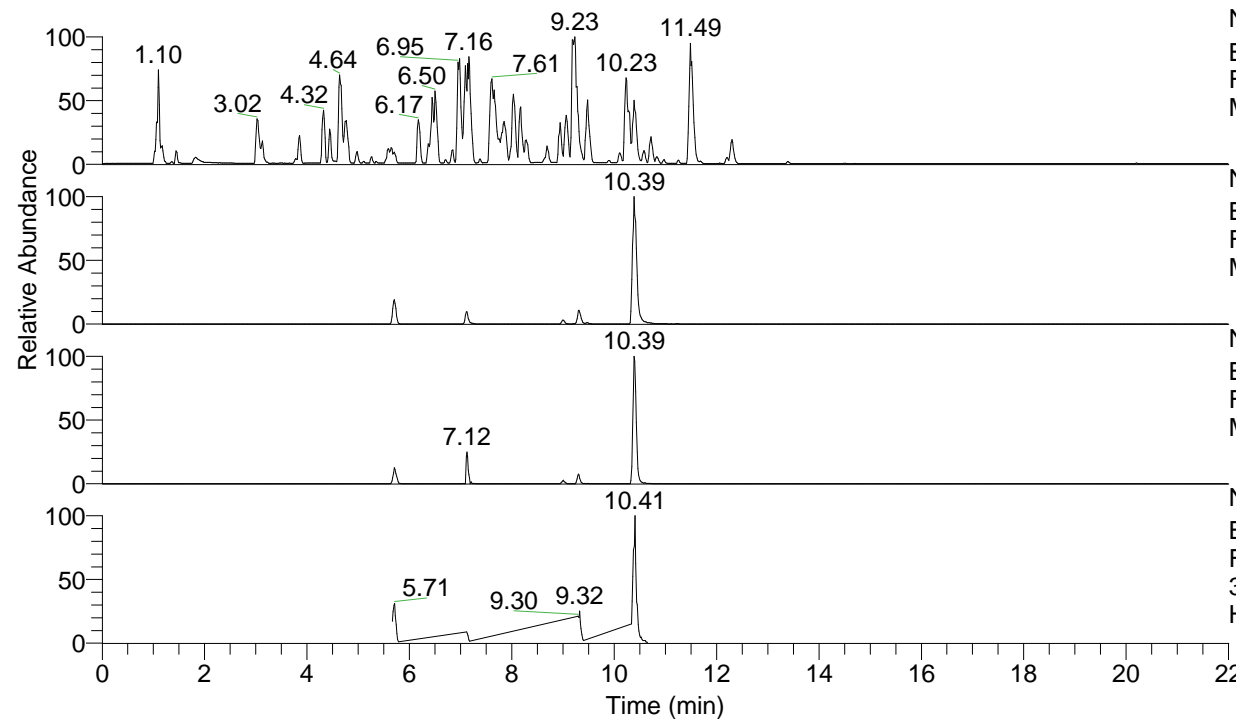


RT: 0.00 - 22.00



NL: 4.98E7  
 Base Peak m/z= 100.00000-1500.00000 F:  
 FTMS + p ESI Full ms [100.00-1500.00]  
 MS Hololenasp

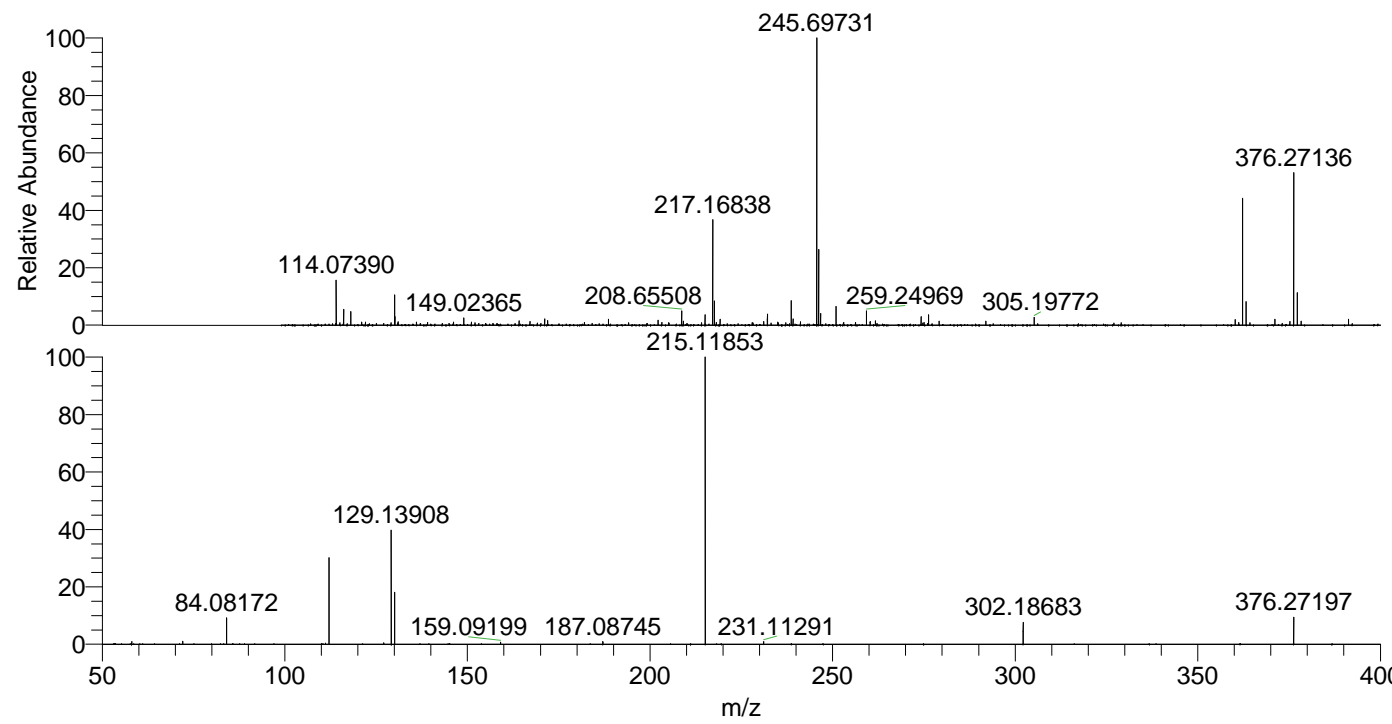
NL: 2.50E7  
 Base Peak m/z= 376.26937-376.27313 F:  
 FTMS + p ESI Full ms [100.00-1500.00]  
 MS Hololenasp

NL: 1.52E6  
 Base Peak m/z= 188.63860-188.64048 F:  
 FTMS + p ESI Full ms [100.00-1500.00]  
 MS Hololenasp

NL: 2.93E6  
 Base Peak m/z= 50.00000-1500.00000 F:  
 FTMS + p ESI d Full ms2  
 376.27@hcd35.00 [50.00-400.00] MS  
 Hololenasp

Hololenasp#3732-3749 RT: 9.31-9.35  
 F: FTMS + p ESI d Full ms2 376.27 ...  
 m/z= 50.00000-1000.00000

m/z	Intensity	Relative
58.06611	4581.8	0.89
72.08179	5594.5	1.08
84.08172	45578.5	8.84
112.11272	154788.1	30.02
127.12384	2793.3	0.54
129.13908	197612.3	38.32
130.06556	89687.9	17.39
159.09199	3602.0	0.70
187.08745	4688.0	0.91
215.11853	515664.4	100.00
231.11291	4574.1	0.89
302.18683	38452.9	7.46
376.27197	46785.8	9.07



NL: 4.92E6  
 Hololenasp#3733 RT:  
 9.31 AV: 1 T: FTMS + p  
 ESI Full ms  
 [100.00-1500.00]

NL: 4.95E5  
 Hololenasp#3729-3754  
 RT: 9.31-9.35 AV: 4 F:  
 FTMS + p ESI d Full ms2  
 376.27@hcd35.00  
 [50.00-400.00]