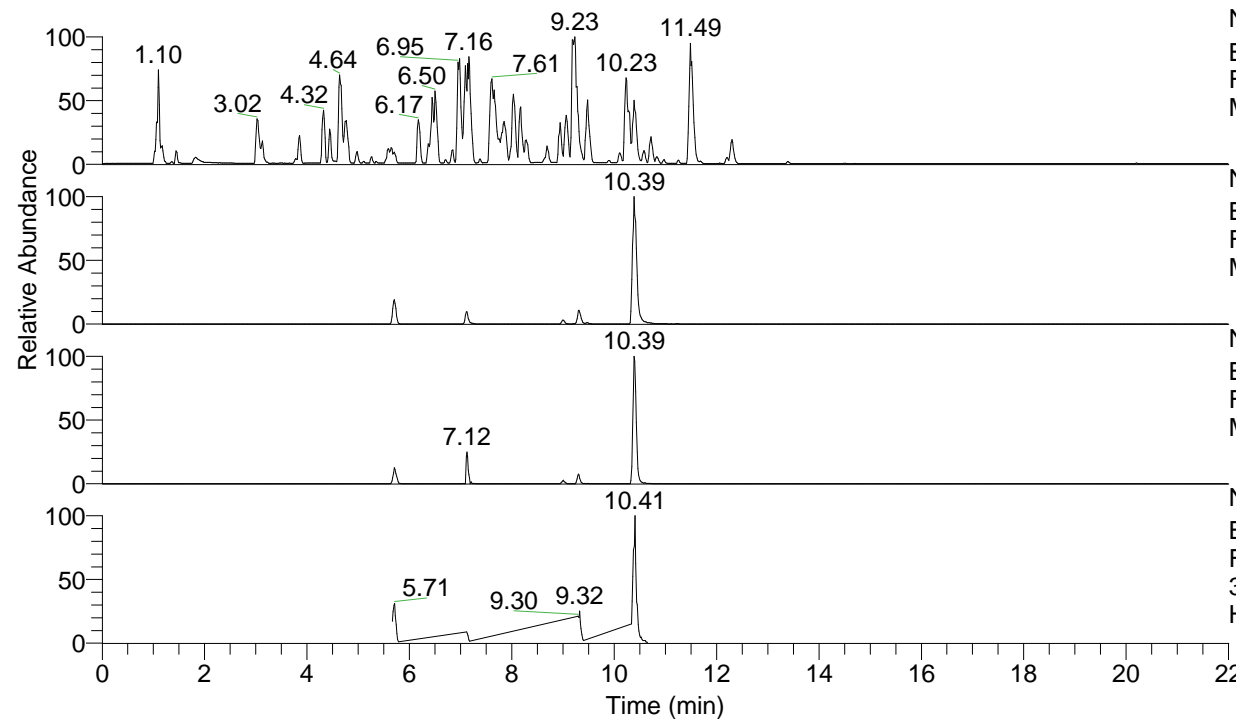


RT: 0.00 - 22.00



NL: 4.98E7
 Base Peak m/z= 100.00000-1500.00000 F:
 FTMS + p ESI Full ms [100.00-1500.00]
 MS Hololenasp

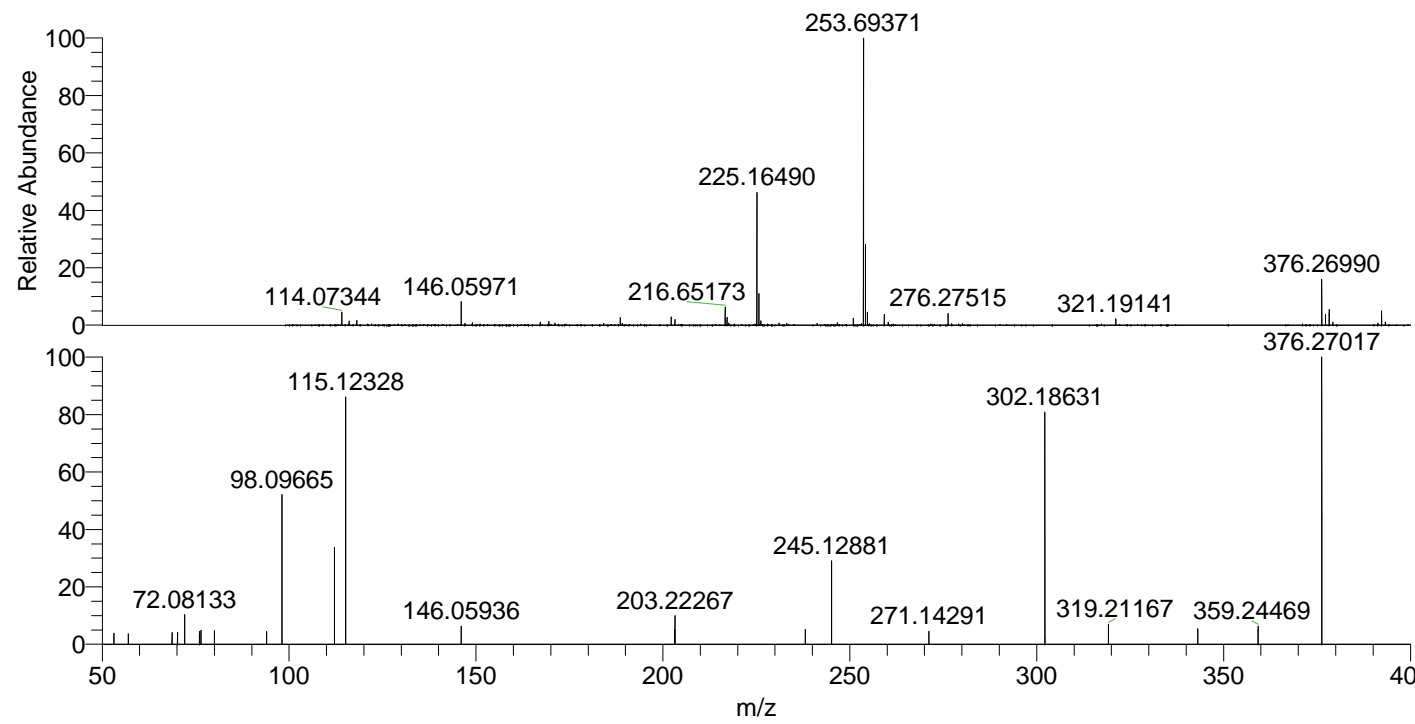
NL: 2.50E7
 Base Peak m/z= 376.26937-376.27313 F:
 FTMS + p ESI Full ms [100.00-1500.00]
 MS Hololenasp

NL: 1.52E6
 Base Peak m/z= 188.63860-188.64048 F:
 FTMS + p ESI Full ms [100.00-1500.00]
 MS Hololenasp

NL: 2.93E6
 Base Peak m/z= 50.00000-1500.00000 F:
 FTMS + p ESI d Full ms2
 376.27@hcd35.00 [50.00-400.00] MS
 Hololenasp

Hololenasp#2862 RT: 7.16
 F: FTMS + p ESI d Full ms2 376.27 ...
 m/z= 50.00000-1000.00000

m/z	Intensity	Relative
53.14556	2905.4	3.85
56.97540	2798.0	3.71
68.67181	3182.1	4.22
70.12757	3098.4	4.11
72.08133	8039.3	10.65
76.03416	3526.8	4.67
76.42818	3807.5	5.05
80.04814	3653.5	4.84
93.96046	3344.6	4.43
98.09665	39571.2	52.44
112.11227	26445.7	35.04
115.12328	65981.5	87.43
146.05936	4748.2	6.29
203.18024	3923.5	5.20
203.22267	7718.1	10.23
238.12582	3881.8	5.14
245.12881	22610.3	29.96
271.14291	3455.7	4.58
302.18631	61573.5	81.59
319.21167	5347.0	7.09
343.09055	4163.5	5.52
359.24469	4836.5	6.41
376.27017	75465.6	100.00



NL: 1.44E7
 Hololenasp#2845 RT:
 7.12 AV: 1 T: FTMS +
 p ESI Full ms
 [100.00-1500.00]

NL: 7.54E4
 Hololenasp#2862 RT:
 7.16 AV: 1 F: FTMS +
 p ESI d Full ms2
 376.27@hcd35.00
 [50.00-400.00]