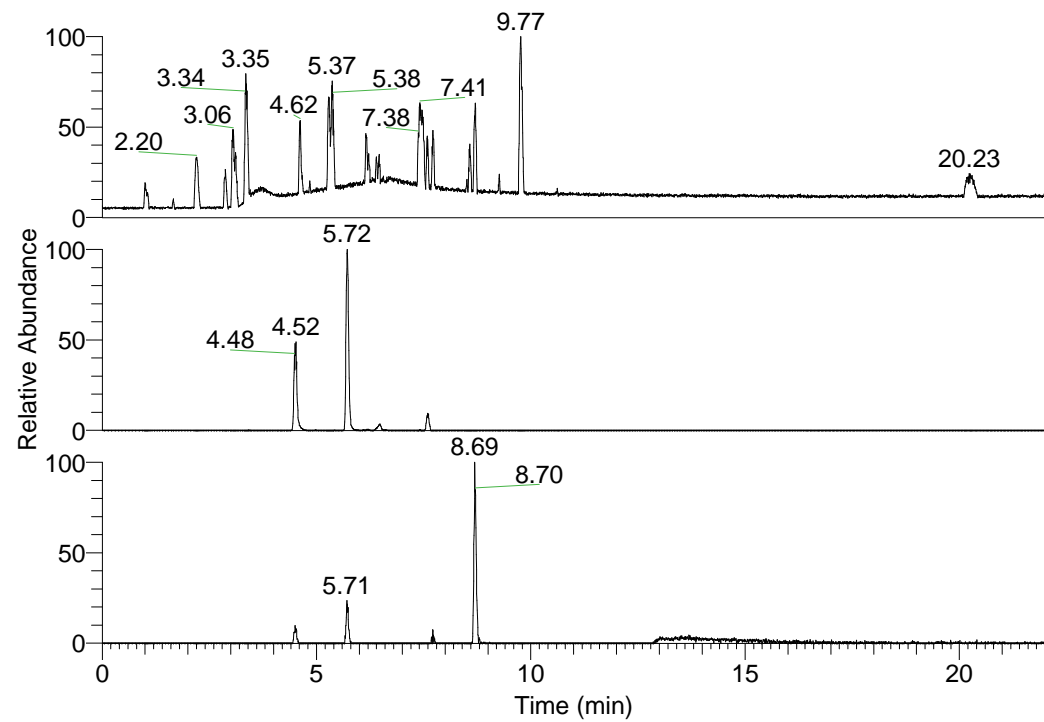


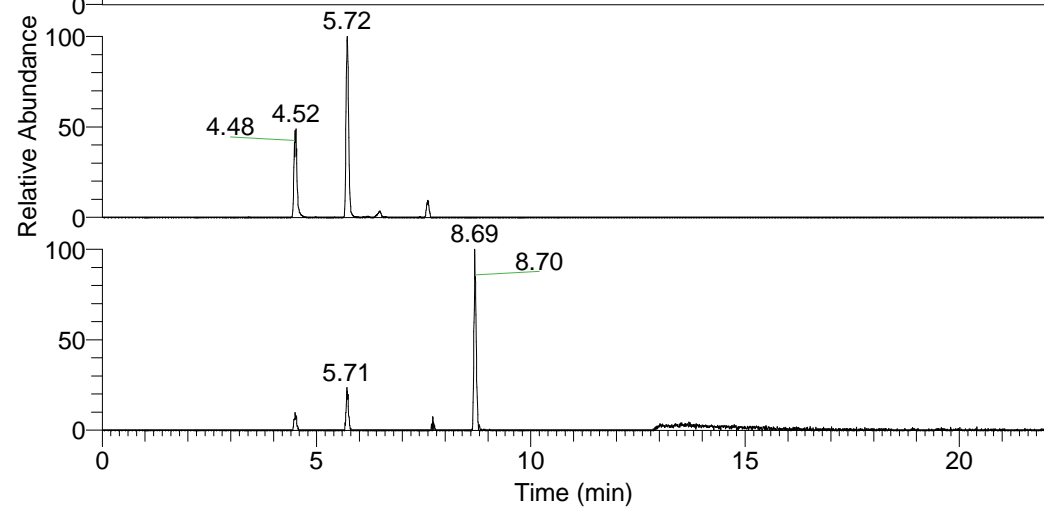
RT: 0.00 - 22.01



NL: 1.37E8  
Base Peak m/z=  
100.00000-1500.00000 F:  
FTMS + p ESI Full ms  
[100.00-1500.00] MS  
Hololenasp\_HDX

Hololenasp\_HDX#705 RT: 4.52  
T: FTMS + p ESI Full ms [100.00-1500.00]  
m/z= 384.00000-385.00000

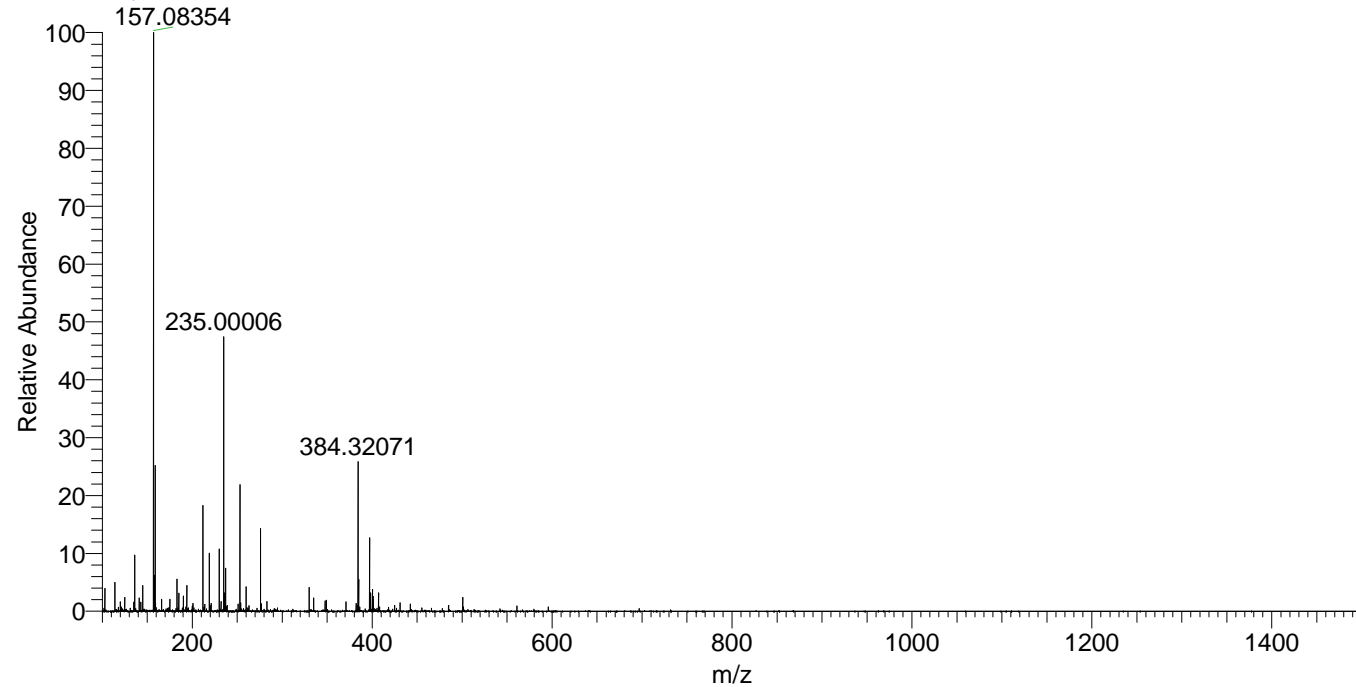
m/z	Intensity	Relative	Delta (ppm)	Composition
384.32071	4777252.0	100.00	-0.54	C <sub>20</sub> H <sub>26</sub> <sup>2</sup> H <sub>8</sub> O <sub>2</sub> N <sub>5</sub>
			3.49	C <sub>20</sub> H <sub>24</sub> <sup>2</sup> H <sub>9</sub> O <sub>2</sub> N <sub>5</sub>
			-4.57	C <sub>20</sub> H <sub>28</sub> <sup>2</sup> H <sub>7</sub> O <sub>2</sub> N <sub>5</sub>



NL: 9.78E6  
Base Peak m/z=  
384.31955-384.32339 F: FTMS  
+ p ESI Full ms  
[100.00-1500.00] MS  
Hololenasp\_HDX

NL: 6.59E5  
Base Peak m/z=  
193.16681-193.16875 F: FTMS  
+ p ESI Full ms  
[100.00-1500.00] MS  
Hololenasp\_HDX

Hololenasp\_HDX #705 RT: 4.52 AV: 1 NL: 1.85E7  
T: FTMS + p ESI Full ms [100.00-1500.00]



Hololenasp\_HDX #705 RT: 4.52 AV: 1 NL: 4.77E6  
T: FTMS + p ESI Full ms [100.00-1500.00]

