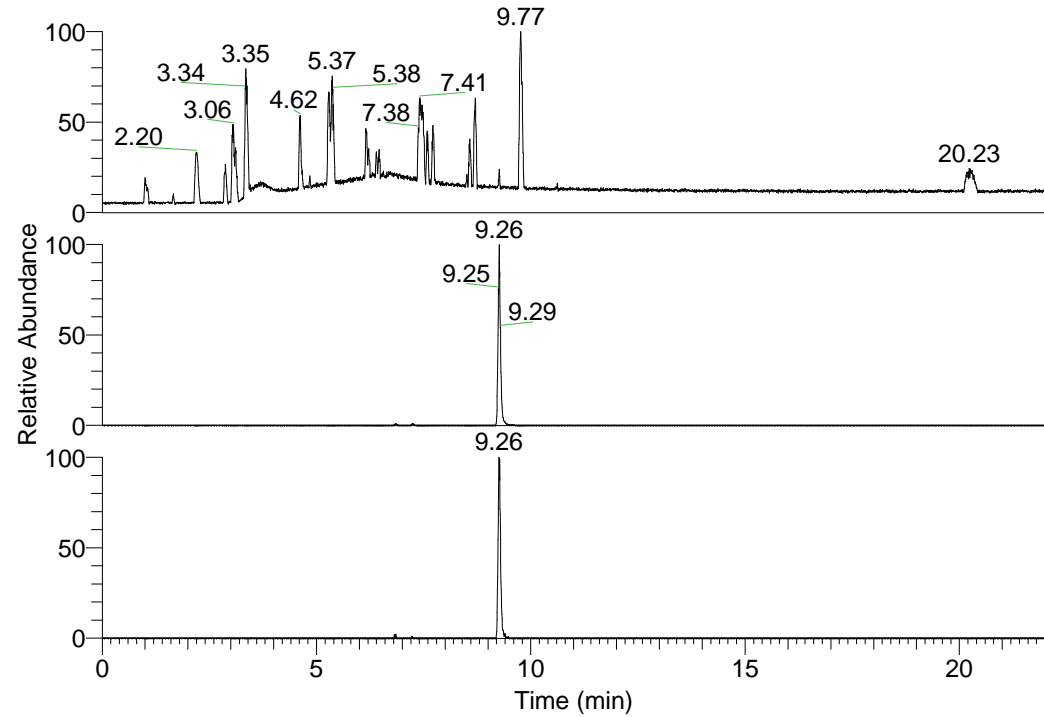


RT: 0.00 - 22.01



NL: 1.37E8
Base Peak m/z=
100.00000-1500.00000 F:
FTMS + p ESI Full ms
[100.00-1500.00] MS
Hololenasp_HDX

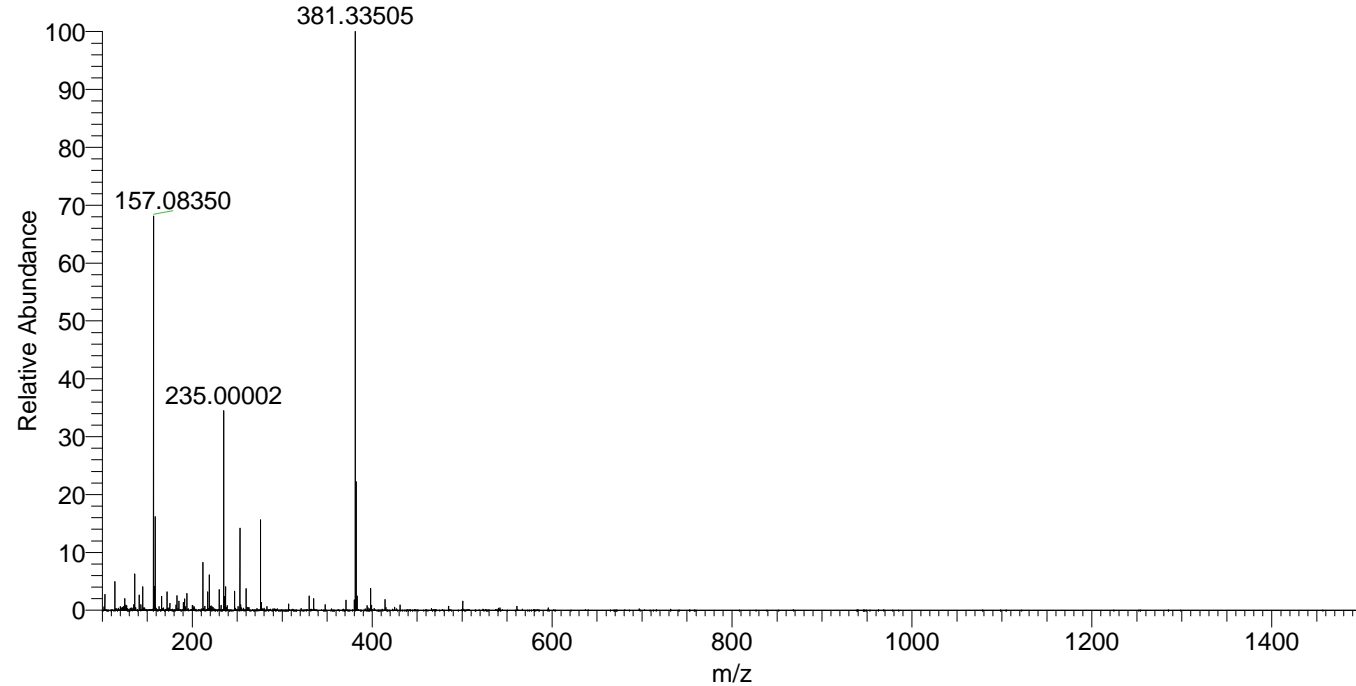
NL: 3.28E7
Base Peak m/z=
381.33401-381.33783 F: FTMS
+ p ESI Full ms
[100.00-1500.00] MS
Hololenasp_HDX

NL: 6.04E5
Base Peak m/z=
191.67405-191.67597 F: FTMS
+ p ESI Full ms
[100.00-1500.00] MS
Hololenasp_HDX

Hololenasp_HDX#1501 RT: 9.26
T: FTMS + p ESI Full ms [100.00-1500.00]
m/z= 381.00000-382.00000

| m/z | Intensity | Relative | Delta (ppm) | Composition |
|-----------|------------|----------|-------------|---|
| 381.33505 | 29357296.0 | 100.00 | -0.84 | C ₂₁ H ₂₉ ² H ₇ O _N ₅ |
| | | | 3.22 | C ₂₁ H ₂₇ ² H ₈ O _N ₅ |
| | | | -4.90 | C ₂₁ H ₃₁ ² H ₆ O _N ₅ |

Hololenasp_HDX #1501 RT: 9.26 AV: 1 NL: 2.87E7
T: FTMS + p ESI Full ms [100.00-1500.00]



Hololenasp_HDX #1501 RT: 9.26 AV: 1 NL: 2.87E7
T: FTMS + p ESI Full ms [100.00-1500.00]

