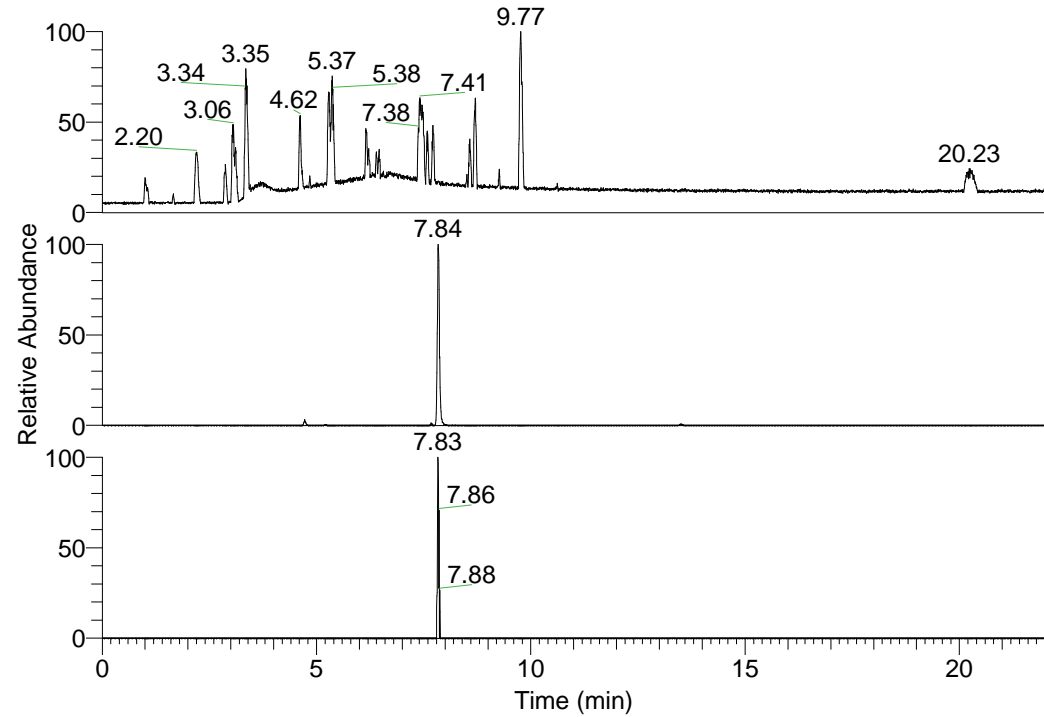


RT: 0.00 - 22.01



NL: 1.37E8  
Base Peak m/z=  
100.00000-1500.00000 F:  
FTMS + p ESI Full ms  
[100.00-1500.00] MS  
Hololenasp\_HDX

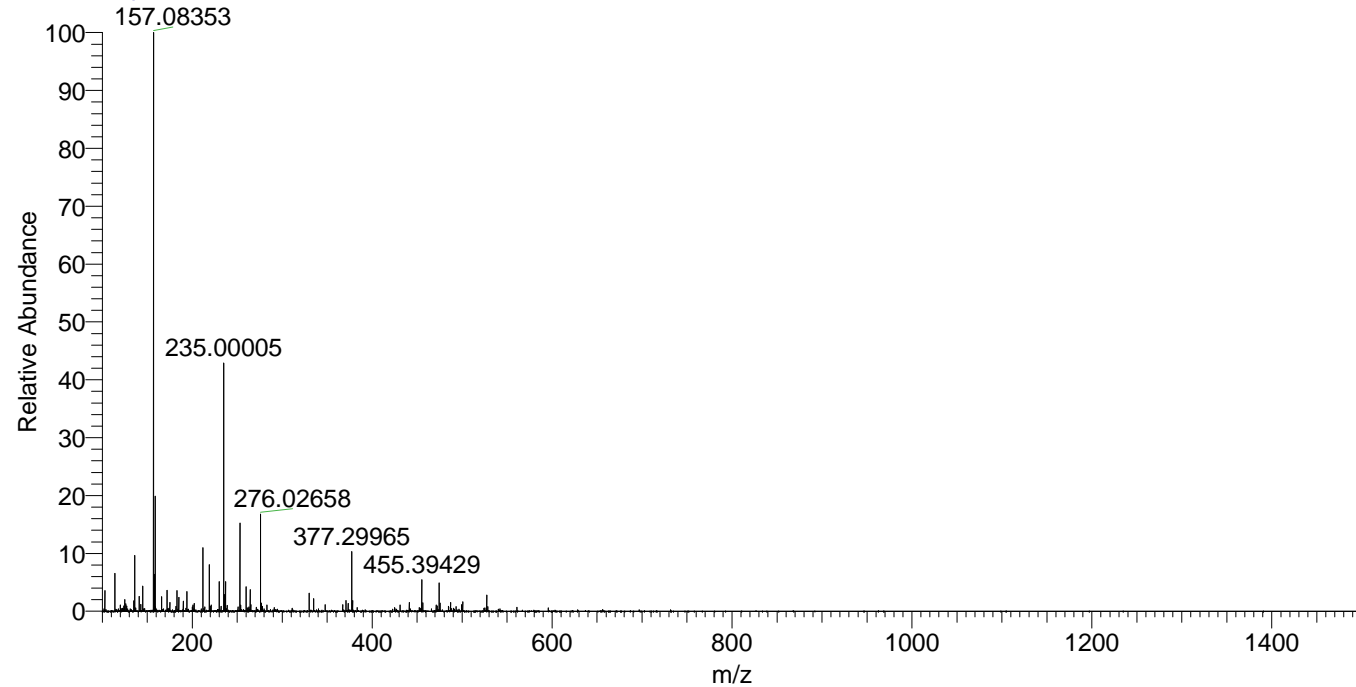
Hololenasp\_HDX#1266 RT: 7.84  
T: FTMS + p ESI Full ms [100.00-1500.00]  
m/z= 377.00000-378.00000

m/z	Intensity	Relative	Delta (ppm)	Composition
377.29965	2467513.5	100.00	-0.51	C <sub>18</sub> H <sub>25</sub> <sup>2</sup> H <sub>8</sub> O <sub>4</sub> N <sub>4</sub>
			3.59	C <sub>18</sub> H <sub>23</sub> <sup>2</sup> H <sub>9</sub> O <sub>4</sub> N <sub>4</sub>
			-4.62	C <sub>18</sub> H <sub>27</sub> <sup>2</sup> H <sub>7</sub> O <sub>4</sub> N <sub>4</sub>

NL: 2.47E6  
Base Peak m/z=  
377.29851-377.30229 F: FTMS  
+ p ESI Full ms  
[100.00-1500.00] MS  
Hololenasp\_HDX

NL: 2.46E4  
Base Peak m/z=  
189.65630-189.65820 F: FTMS  
+ p ESI Full ms  
[100.00-1500.00] MS  
Hololenasp\_HDX

Hololenasp\_HDX #1266 RT: 7.84 AV: 1 NL: 2.38E7  
T: FTMS + p ESI Full ms [100.00-1500.00]



Hololenasp\_HDX #1266 RT: 7.84 AV: 1 NL: 2.45E6  
T: FTMS + p ESI Full ms [100.00-1500.00]

