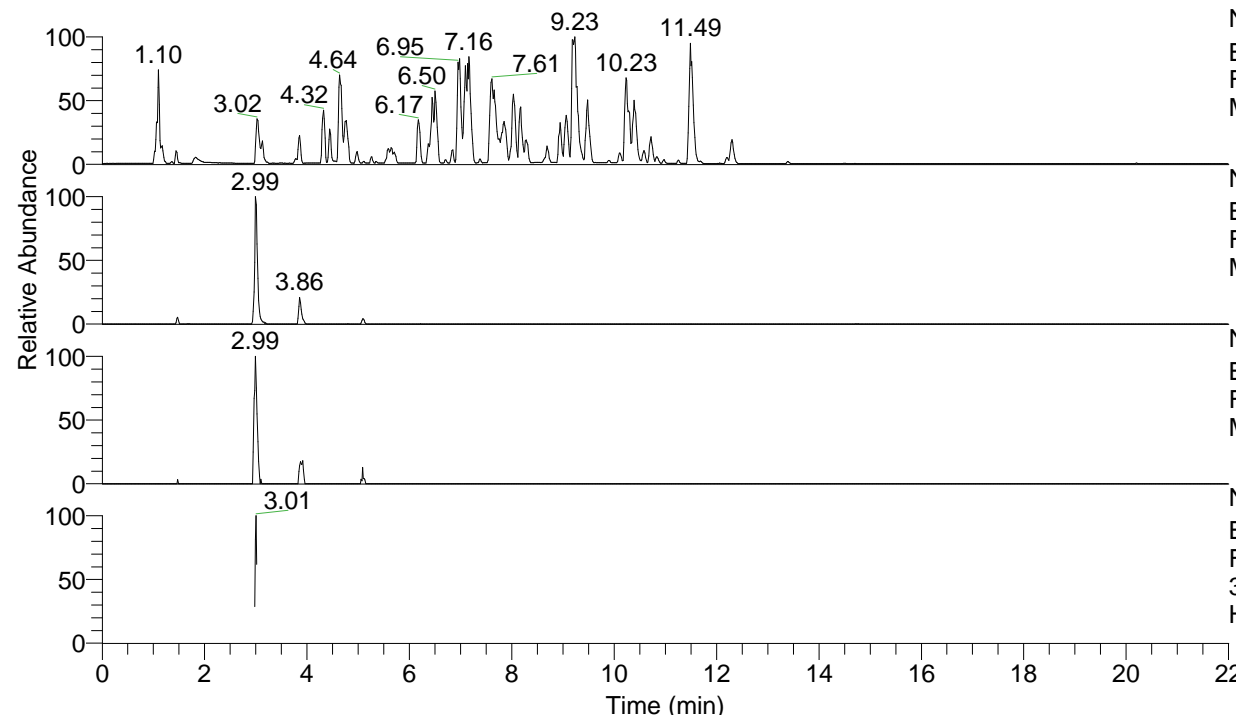


RT: 0.00 - 22.00



NL: 4.98E7
 Base Peak m/z= 100.00000-1500.00000 F:
 FTMS + p ESI Full ms [100.00-1500.00]
 MS Hololenasp

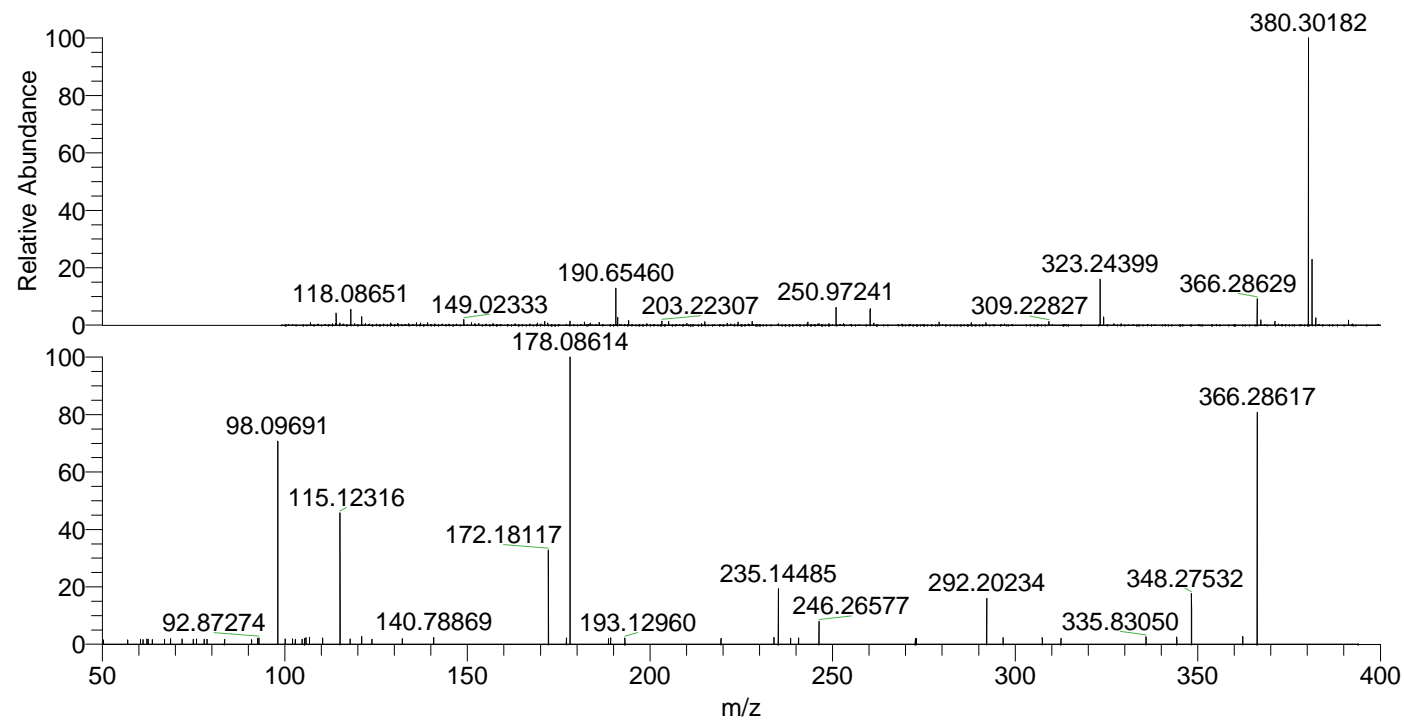
NL: 6.10E5
 Base Peak m/z= 366.28507-366.28873 F:
 FTMS + p ESI Full ms [100.00-1500.00]
 MS Hololenasp

NL: 4.81E4
 Base Peak m/z= 183.64644-183.64828 F:
 FTMS + p ESI Full ms [100.00-1500.00]
 MS Hololenasp

NL: 6.62E4
 Base Peak m/z= 50.00000-1500.00000 F:
 FTMS + p ESI d Full ms2
 366.29@hcd35.00 [50.00-390.00] MS
 Hololenasp

Hololenasp#1188-1205 RT: 2.98-3.02
 F: FTMS + p ESI d Full ms2 366.29 ...
 m/z= 50.00000-1000.00000

m/z	Intensity	Relative
60.48543	742.6	1.72
61.14673	700.4	1.62
61.14992	701.4	1.62
62.19099	800.9	1.85
62.59950	743.1	1.72
63.75577	715.2	1.65
67.02390	769.2	1.78
68.68143	843.1	1.95
71.86915	795.4	1.84
74.91930	726.1	1.68
75.82108	828.7	1.92
77.88999	744.9	1.72
78.68442	744.5	1.72
83.48541	748.8	1.73
92.52003	899.8	2.08
92.87274	936.7	2.17
98.09691	31703.3	73.36
100.07002	826.6	1.91
102.14377	815.9	1.89
102.86126	763.8	1.77
104.72215	769.4	1.78
105.40244	915.5	2.12
105.77475	1009.5	2.34
106.74369	1024.1	2.37
110.38010	977.0	2.26
115.11639	1205.4	2.79
115.12316	20376.9	47.15
117.91194	814.7	1.89
121.02911	1183.8	2.74
123.84041	771.4	1.79
132.19641	877.7	2.03
140.78869	1033.3	2.39
172.18117	14288.8	33.06
177.10198	974.0	2.25
178.08614	43216.5	100.00
188.61476	848.0	1.96
189.20768	974.6	2.26
193.12960	990.9	2.29
219.43839	880.4	2.04
233.96249	1021.5	2.36
235.14485	8348.7	19.32
238.48949	921.4	2.13
240.68425	968.1	2.24
246.26577	3484.1	8.06
272.65673	809.7	1.87
272.90024	921.7	2.13
292.20234	7192.9	16.64
296.71968	1002.7	2.32
307.43130	987.3	2.28
312.53890	933.0	2.16
335.83050	1131.5	2.62
344.24468	1090.6	2.52
348.27532	7829.5	18.12
362.30456	1165.3	2.70
366.28617	35092.4	81.20



NL: 6.58E6
 Hololenasp#1195 RT:
 2.99 AV: 1 T: FTMS + p
 ESI Full lock ms
 [100.00-1500.00]

NL: 4.32E4
 Hololenasp#1184-1208
 RT: 2.98-3.02 AV: 4 F:
 FTMS + p ESI d Full ms2
 366.29@hcd35.00
 [50.00-390.00]