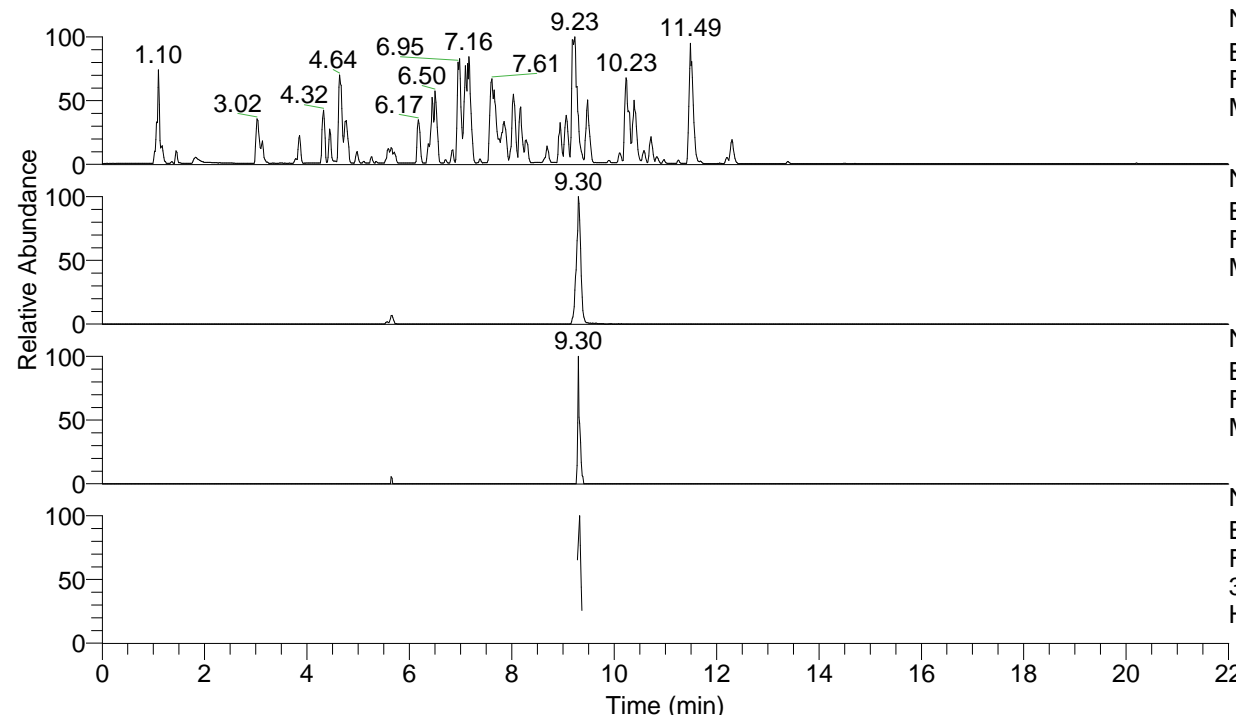


RT: 0.00 - 22.00



NL: 4.98E7
 Base Peak m/z= 100.00000-1500.00000 F:
 FTMS + p ESI Full ms [100.00-1500.00]
 MS Hololenasp

NL: 2.32E6
 Base Peak m/z= 362.25379-362.25741 F:
 FTMS + p ESI Full ms [100.00-1500.00]
 MS Hololenasp

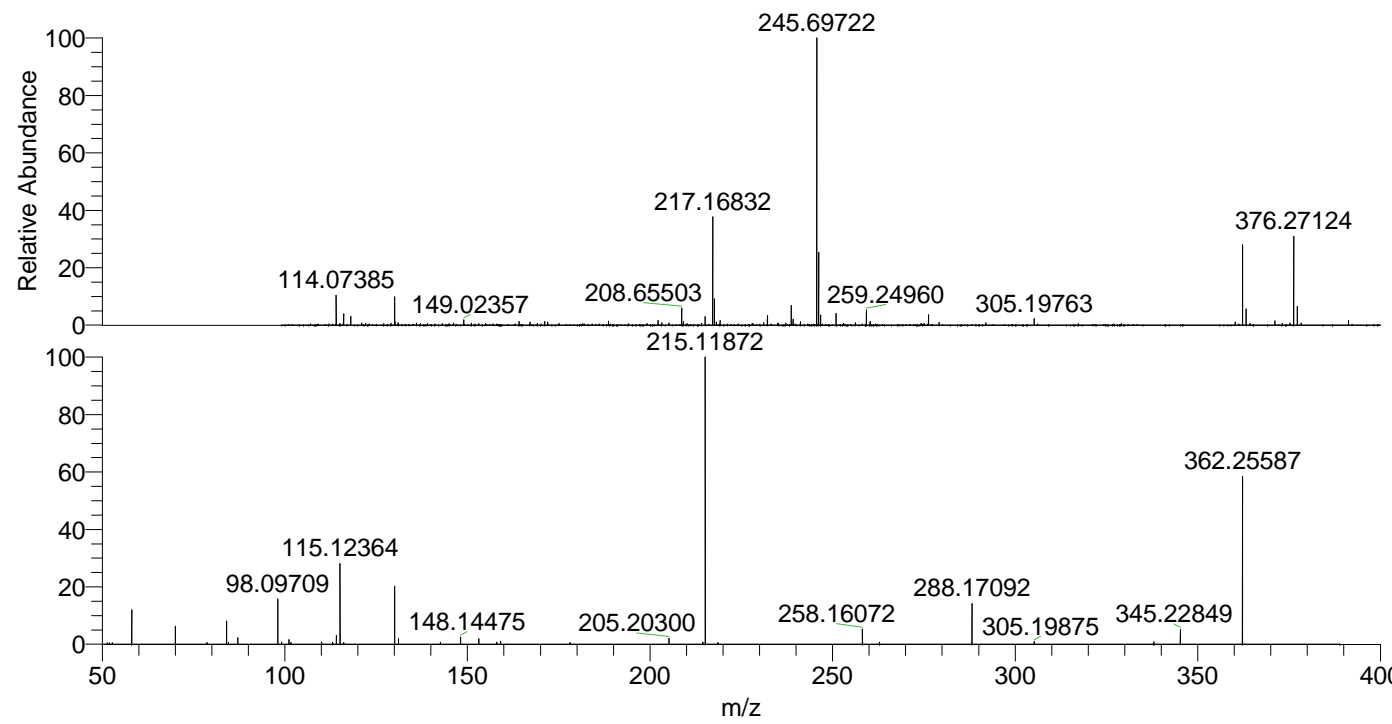
NL: 3.85E4
 Base Peak m/z= 181.63080-181.63262 F:
 FTMS + p ESI Full ms [100.00-1500.00]
 MS Hololenasp

NL: 3.41E5
 Base Peak m/z= 50.00000-1500.00000 F:
 FTMS + p ESI d Full ms2
 362.26@hcd35.00 [50.00-385.00] MS
 Hololenasp

Hololenasp#3738-3744 RT: 9.32-9.34

F: FTMS + p ESI d Full ms2 362.26 ...
 m/z= 50.00000-1000.00000

m/z	Intensity	Relative
58.06616	33318.0	11.85
70.06607	17485.7	6.22
78.73241	1747.7	0.62
84.08164	22584.9	8.03
84.56599	1714.1	0.61
87.09243	6353.6	2.26
98.09709	44220.5	15.72
99.10575	1972.1	0.70
101.10813	4416.8	1.57
101.67953	1638.4	0.58
110.09698	2108.3	0.75
113.10757	2149.4	0.76
114.09198	8737.9	3.11
115.12364	80236.0	28.53
116.10968	1874.9	0.67
130.06544	56557.5	20.11
131.11862	5340.7	1.90
142.62114	2160.0	0.77
148.14475	7037.8	2.50
153.13877	5464.9	1.94
158.06131	2108.2	0.75
159.09269	3040.5	1.08
178.11906	1819.2	0.65
205.20300	5859.4	2.08
214.42216	1667.1	0.59
214.47081	1928.5	0.69
215.11872	281273.9	100.00
218.61367	1673.2	0.59
258.16072	15453.1	5.49
262.83798	1939.9	0.69
288.17092	40540.6	14.41
305.19875	2549.0	0.91
337.96190	2126.9	0.76
338.00005	2200.6	0.78
345.22849	14424.5	5.13
362.25587	166783.1	59.30



NL: 8.21E6
 Hololenasp#3727 RT:
 9.30 AV: 1 T: FTMS + p
 ESI Full ms
 [100.00-1500.00]

NL: 2.78E5
 Hololenasp#3721-3748
 RT: 9.32-9.34 AV: 2 F:
 FTMS + p ESI d Full ms2
 362.26@hcd35.00
 [50.00-385.00]