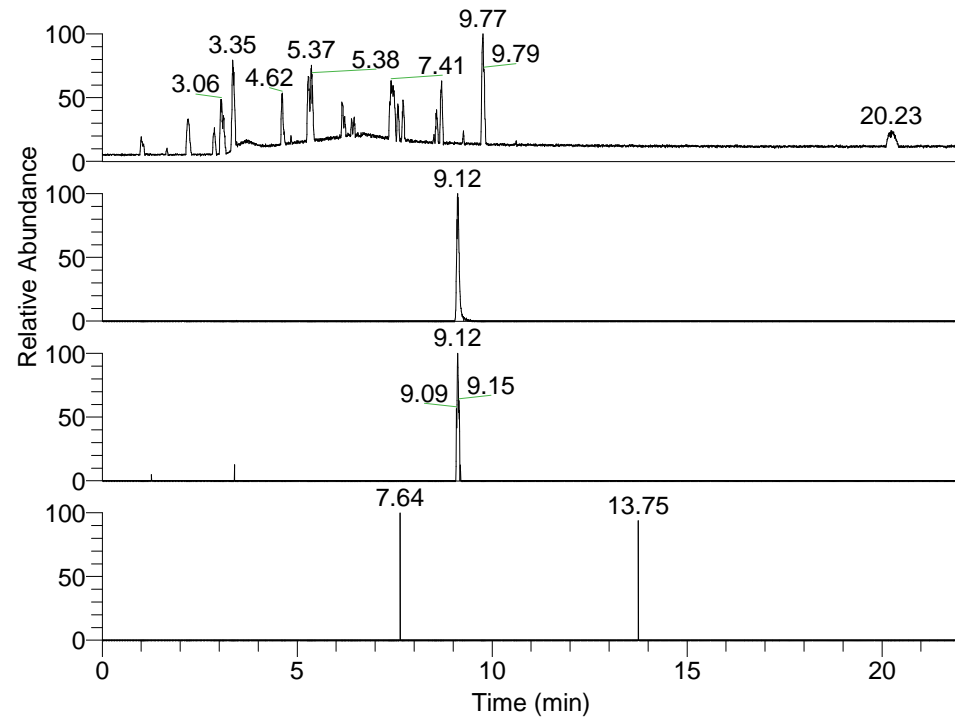
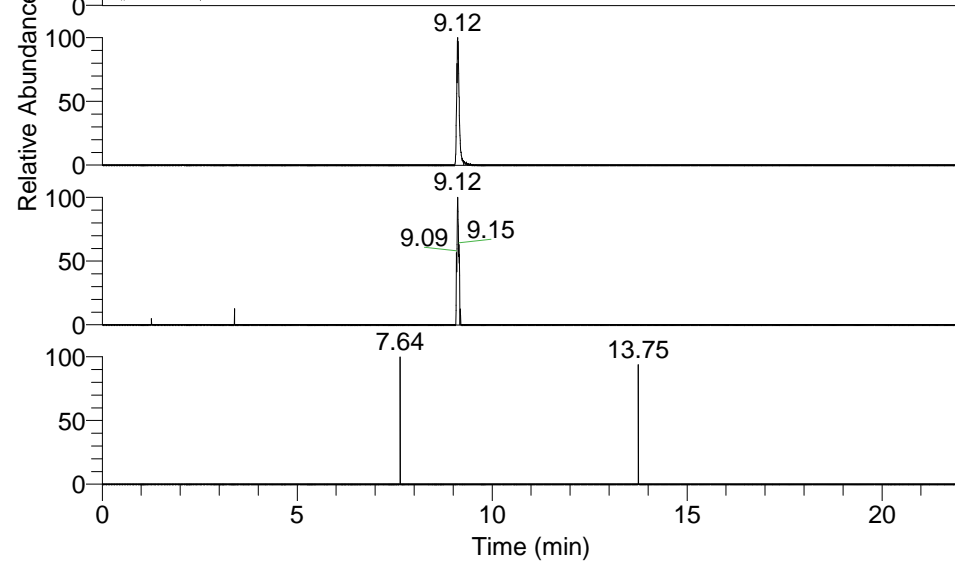


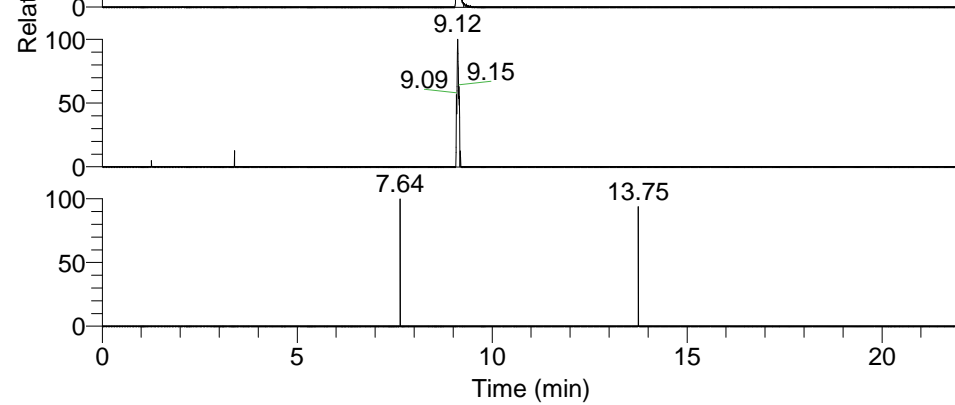
RT: 0.00 - 22.01



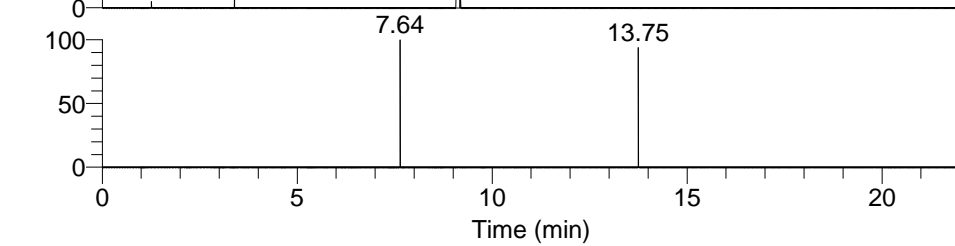
NL: 1.37E8
Base Peak m/z=
100.00000-1500.00000 F: FTMS + p
ESI Full ms [100.00-1500.00] MS
Hololenasp_HDX



NL: 7.99E5
Base Peak m/z= 362.29811-362.30173
F: FTMS + p ESI Full ms
[100.00-1500.00] MS Hololenasp_HDX



NL: 4.41E4
Base Peak m/z= 182.15610-182.15792
F: FTMS + p ESI Full ms
[100.00-1500.00] MS Hololenasp_HDX

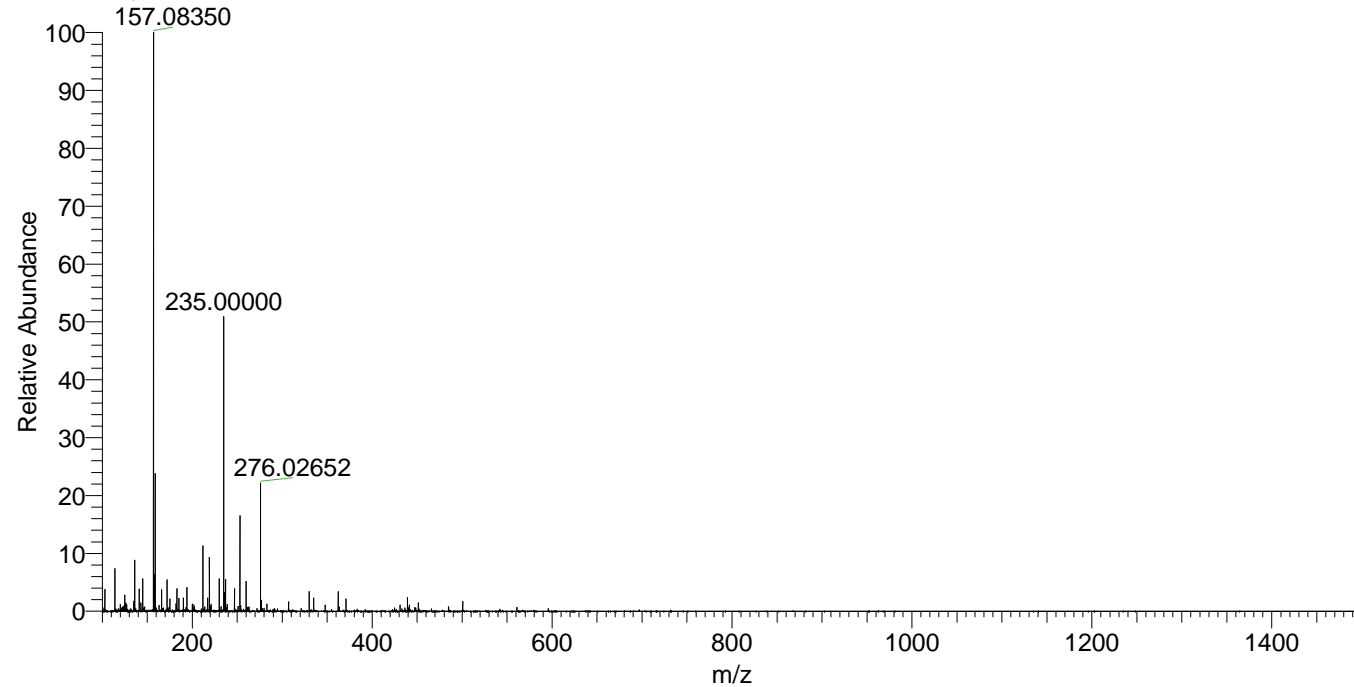


NL: 3.54E3
Base Peak m/z= 477.29667-477.30145
F: FTMS + p ESI Full ms
[100.00-1500.00] MS Hololenasp_HDX

Hololenasp_HDX#1479 RT: 9.12
T: FTMS + p ESI Full ms [100.00-1500.00]
m/z= 362.00000-363.00000

| m/z | Intensity | Relative | Delta (ppm) | Composition |
|-----------|-----------|----------|-------------|---|
| 362.29904 | 663745.8 | 100.00 | -0.90 | C ₂₁ H ₃₂ ² H ₃ ON ₄ |
| | | | 3.37 | C ₂₁ H ₃₀ ² H ₄ ON ₄ |

Hololenasp_HDX #1479 RT: 9.12 AV: 1 NL: 1.88E7
T: FTMS + p ESI Full ms [100.00-1500.00]



Hololenasp_HDX #1479 RT: 9.12 AV: 1 NL: 6.37E5
T: FTMS + p ESI Full ms [100.00-1500.00]

