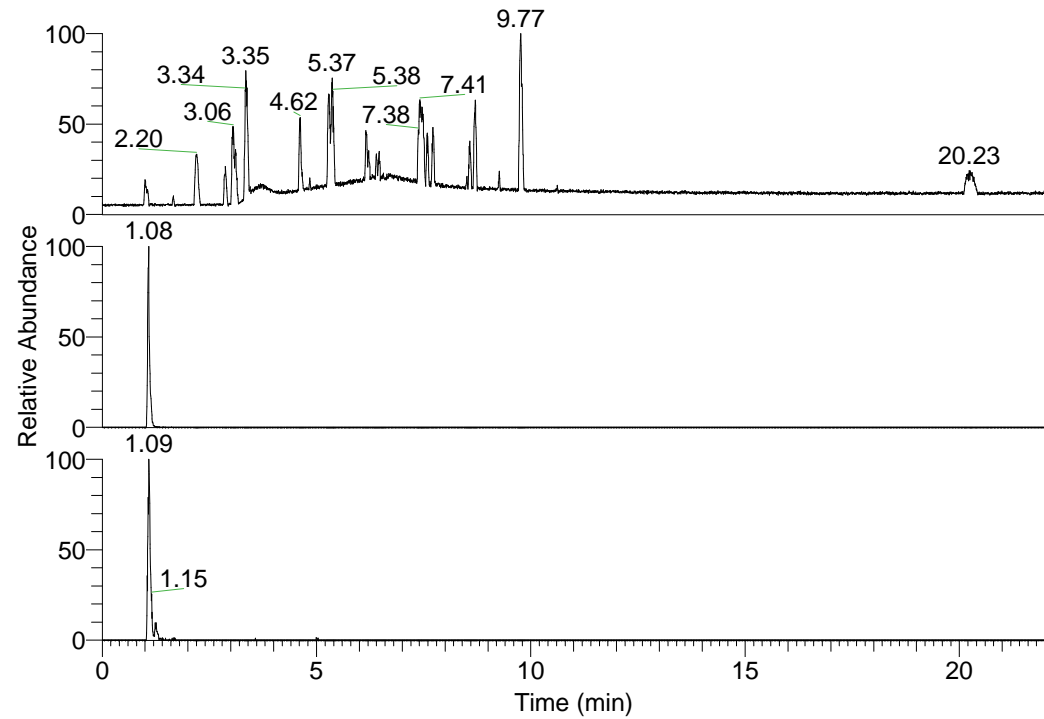


RT: 0.00 - 22.01



NL: 1.37E8
 Base Peak m/z=
 100.00000-1500.00000 F:
 FTMS + p ESI Full ms
 [100.00-1500.00] MS
 Hololenasp_HDX

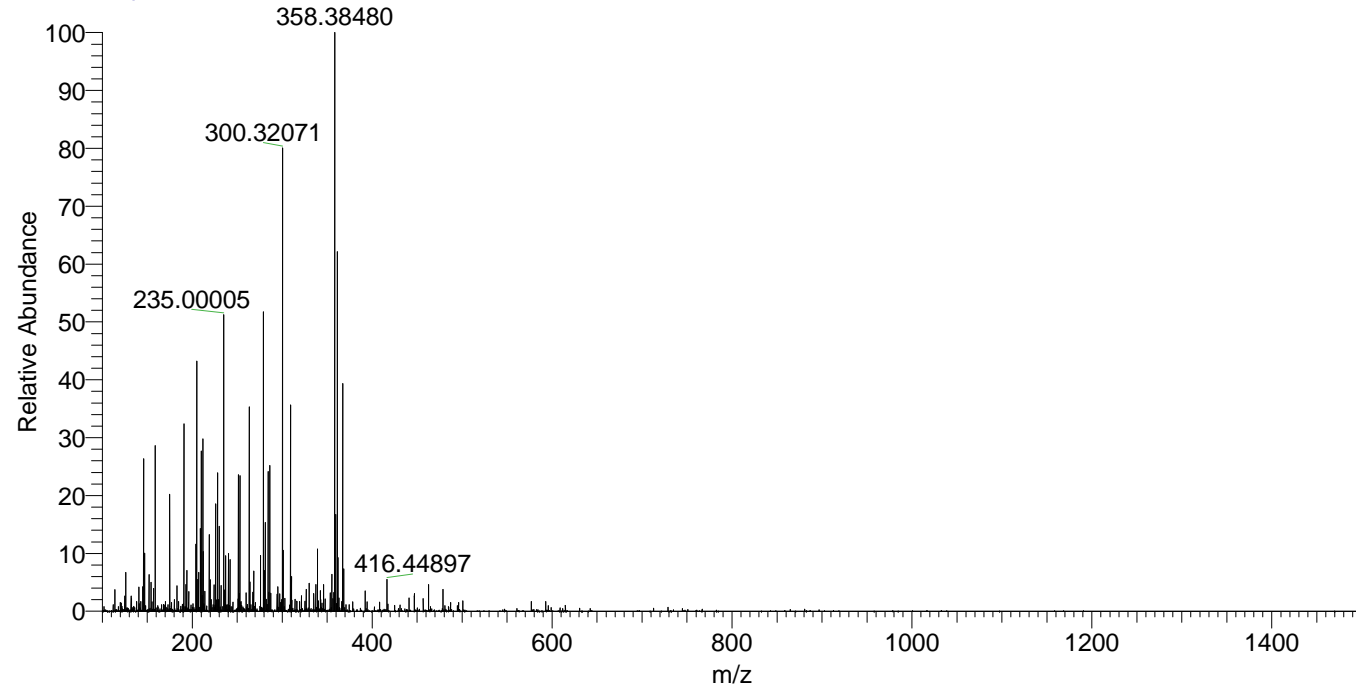
Hololenasp_HDX#161 RT: 1.08
 T: FTMS + p ESI Full ms [100.00-1500.00]
 m/z= 367.00000-368.00000

m/z	Intensity	Relative	Delta (ppm)	Composition
367.39923	4949396.0	100.00	-0.73	C ₁₈ H ₃₅ ² H ₈ ON ₆
			3.48	C ₁₈ H ₃₃ ² H ₉ ON ₆
			-4.95	C ₁₈ H ₃₇ ² H ₇ ON ₆

NL: 5.56E6
 Base Peak m/z=
 367.39821-367.40189 F: FTMS
 + p ESI Full ms
 [100.00-1500.00] MS
 Hololenasp_HDX

NL: 2.98E5
 Base Peak m/z=
 184.70616-184.70800 F: FTMS
 + p ESI Full ms
 [100.00-1500.00] MS
 Hololenasp_HDX

Hololenasp_HDX #161 RT: 1.08 AV: 1 NL: 1.22E7
 T: FTMS + p ESI Full ms [100.00-1500.00]



Hololenasp_HDX #161 RT: 1.08 AV: 1 NL: 1.22E7
 T: FTMS + p ESI Full ms [100.00-1500.00]

