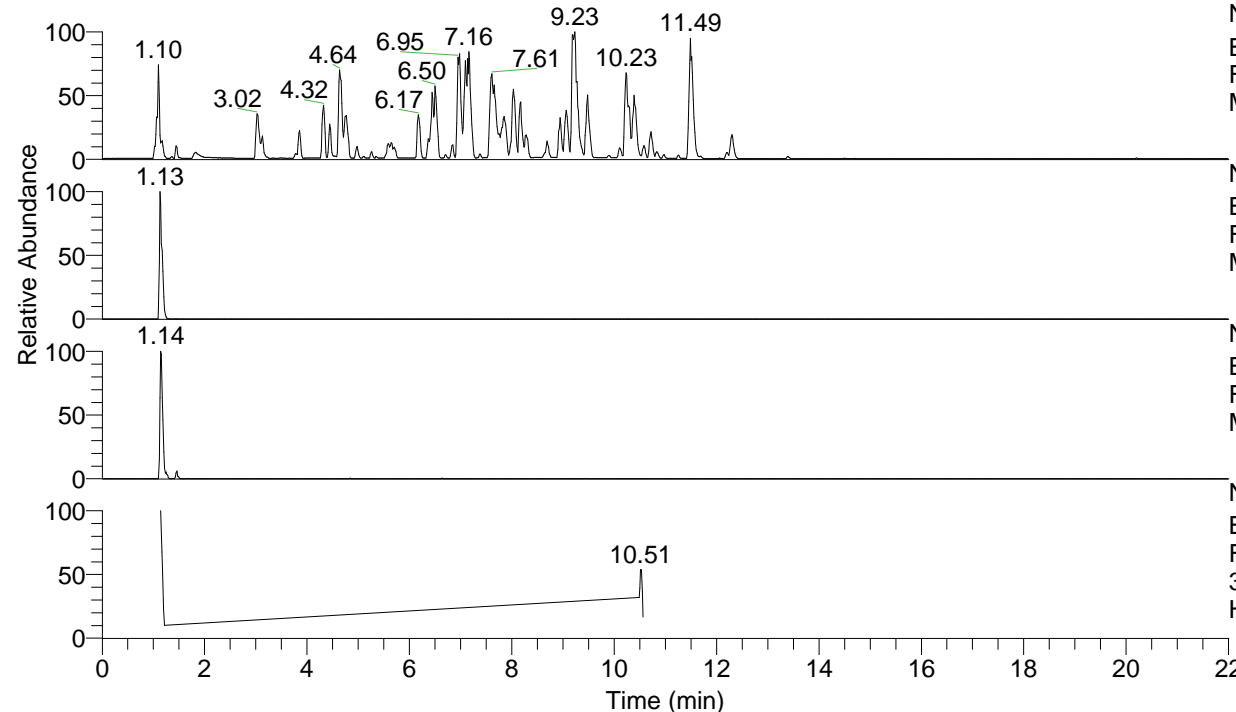


RT: 0.00 - 22.00



NL: 4.98E7
 Base Peak m/z= 100.00000-1500.00000 F:
 FTMS + p ESI Full ms [100.00-1500.00]
 MS Hololenasp

NL: 4.42E6
 Base Peak m/z= 359.34804-359.35164 F:
 FTMS + p ESI Full ms [100.00-1500.00]
 MS Hololenasp

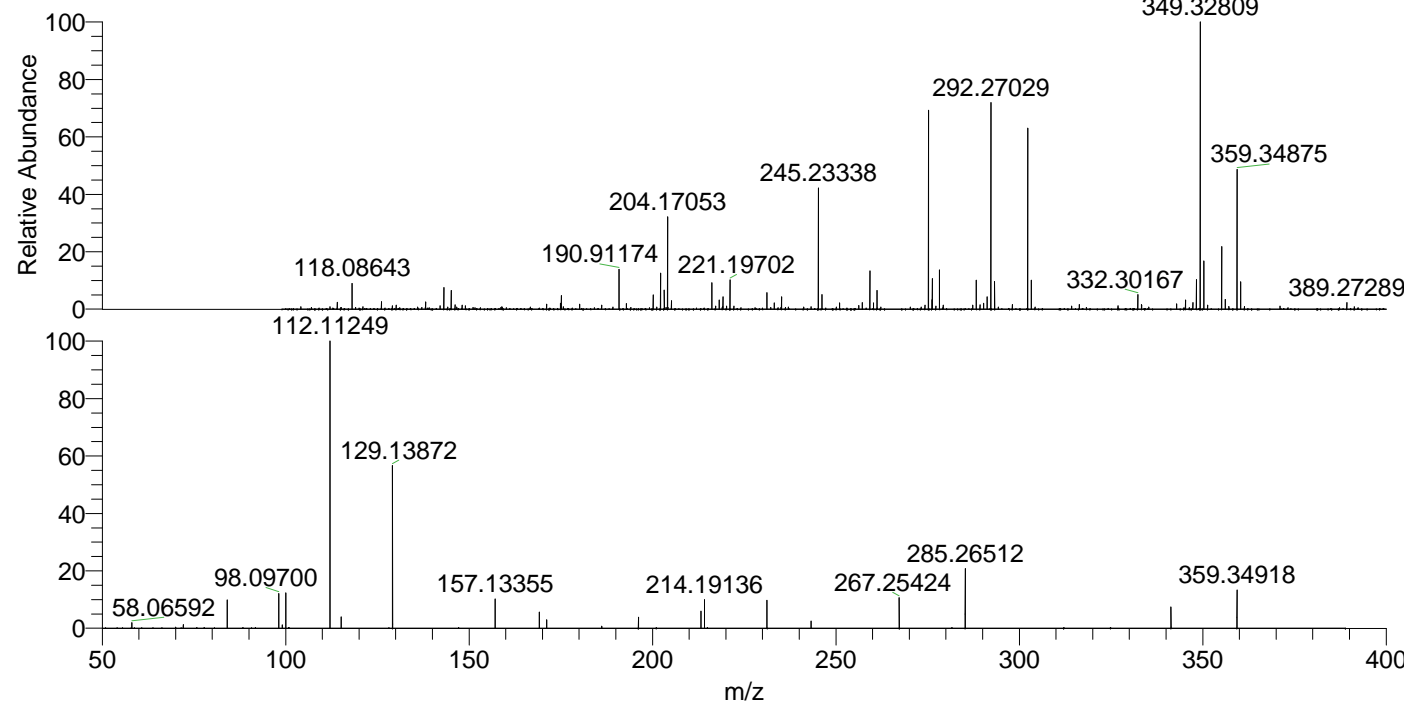
NL: 2.65E5
 Base Peak m/z= 180.17793-180.17973 F:
 FTMS + p ESI Full ms [100.00-1500.00]
 MS Hololenasp

NL: 7.23E5
 Base Peak m/z= 50.00000-1500.00000 F:
 FTMS + p ESI d Full ms2
 359.28@hcd35.00 [50.00-385.00] MS
 Hololenasp

Hololenasp#456-479 RT: 1.14-1.20 AV: 4

F: FTMS + p ESI d Full ms2 359.28 ...
 m/z= 50.00000-1000.00000

m/z	Intensity	Relative
58.06592	7627.4	1.88
72.08150	5194.4	1.28
84.08146	39518.7	9.73
98.09700	49798.9	12.26
99.09211	4832.2	1.19
100.07621	49242.6	12.12
112.11249	406137.2	100.00
115.12324	16541.3	4.07
129.13872	229160.5	56.42
157.13355	42517.6	10.47
169.16995	22251.8	5.48
171.14938	11984.5	2.95
186.19686	3012.9	0.74
196.18133	15204.2	3.74
213.20732	23756.3	5.85
214.19136	39929.5	9.83
231.21786	39702.8	9.78
243.25456	9845.0	2.42
267.25424	42904.3	10.56
285.26512	83516.5	20.56
341.33905	30066.3	7.40
359.34918	54548.8	13.43



NL: 9.00E6
 Hololenasp#451 RT: 1.13
 AV: 1 T: FTMS + p ESI
 Full ms [100.00-1500.00]

NL: 3.99E5
 Hololenasp#451-479 RT:
 1.14-1.20 AV: 4 F: FTMS
 + p ESI d Full ms2
 359.28@hcd35.00
 [50.00-385.00]