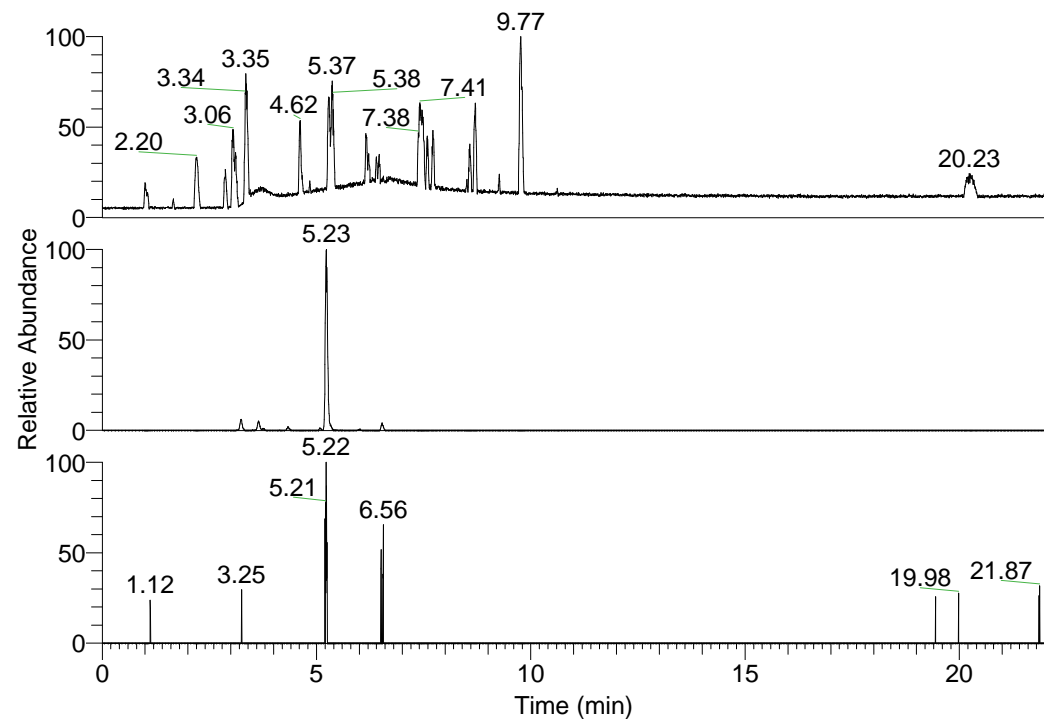


RT: 0.00 - 22.01



NL: 1.37E8
Base Peak m/z=
100.00000-1500.00000 F:
FTMS + p ESI Full ms
[100.00-1500.00] MS
Hololenasp_HDX

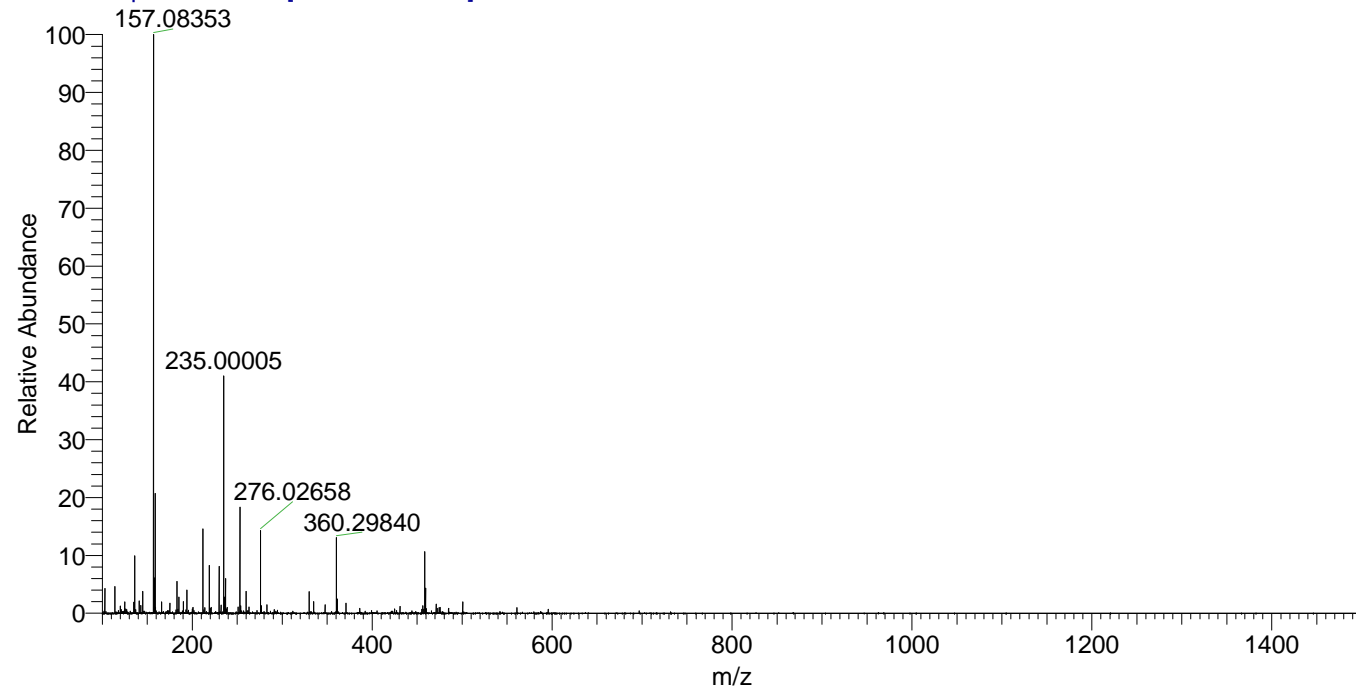
NL: 2.87E6
Base Peak m/z=
360.29740-360.30100 F: FTMS
+ p ESI Full ms
[100.00-1500.00] MS
Hololenasp_HDX

NL: 1.53E4
Base Peak m/z=
181.15571-181.15753 F: FTMS
+ p ESI Full ms
[100.00-1500.00] MS
Hololenasp_HDX

Hololenasp_HDX#822 RT: 5.23
T: FTMS + p ESI Full ms [100.00-1500.00]
m/z= 360.00000-361.00000

m/z	Intensity	Relative	Delta (ppm)	Composition
360.29840	2870557.0	100.00	-0.70	C ₁₈ H ₂₆ ² H ₇ O ₃ N ₄
			3.59	C ₁₈ H ₂₄ ² H ₈ O ₃ N ₄

Hololenasp_HDX #822 RT: 5.23 AV: 1 NL: 2.19E7
T: FTMS + p ESI Full ms [100.00-1500.00]



Hololenasp_HDX #822 RT: 5.23 AV: 1 NL: 2.87E6
T: FTMS + p ESI Full ms [100.00-1500.00]

