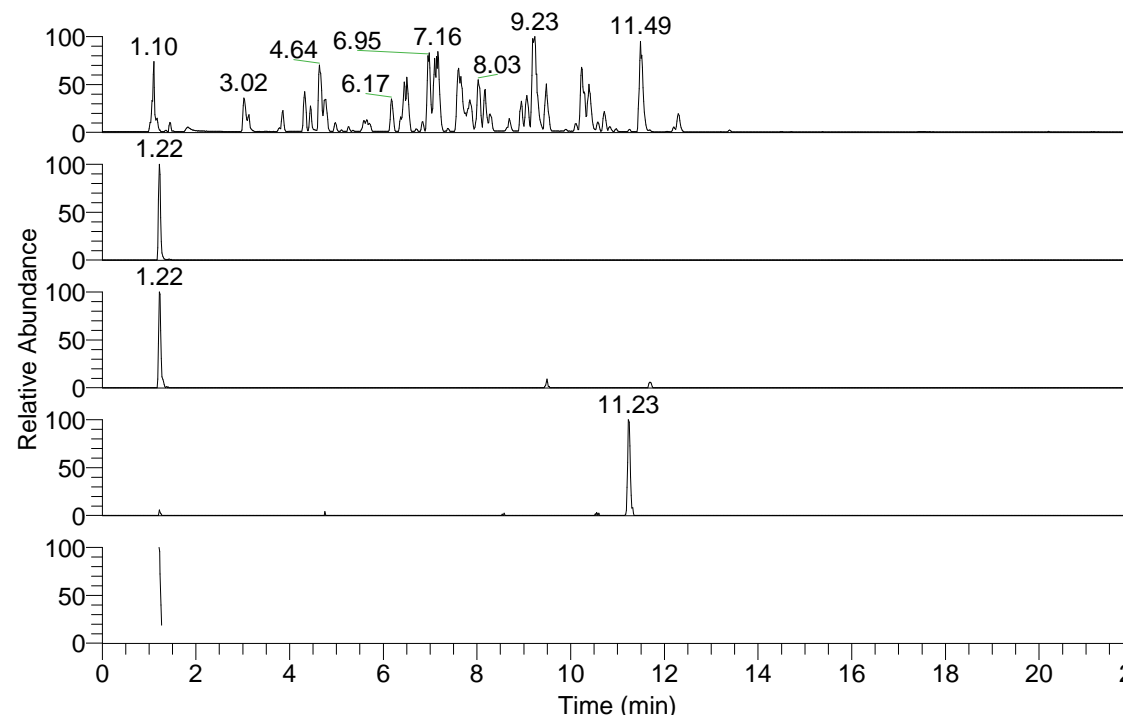


RT: 0.00 - 22.00



NL: 4.98E7
 Base Peak m/z= 100.00000-1500.00000 F: FTMS + p ESI Full ms [100.00-1500.00] MS Hololenasp

NL: 1.30E6
 Base Peak m/z= 348.33211-348.33559 F: FTMS + p ESI Full ms [100.00-1500.00] MS Hololenasp

NL: 1.26E5
 Base Peak m/z= 174.66997-174.67171 F: FTMS + p ESI Full ms [100.00-1500.00] MS Hololenasp

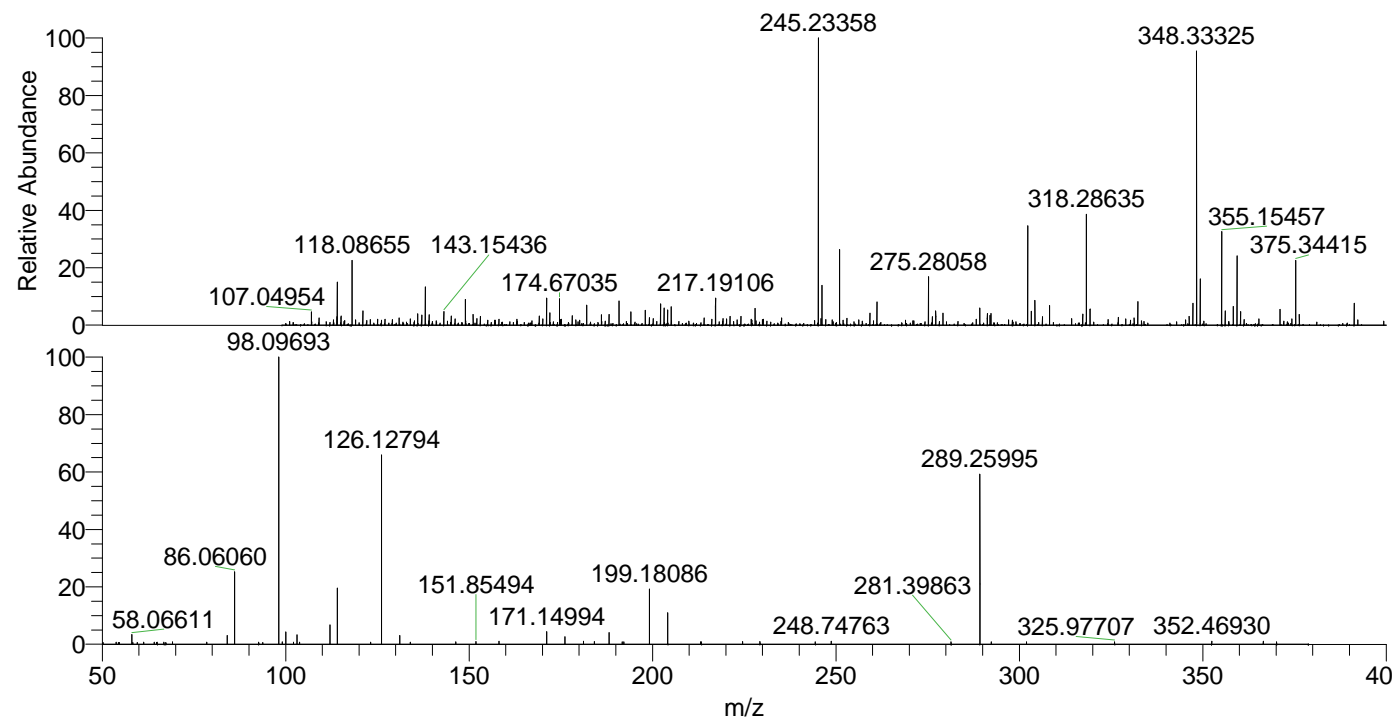
NL: 7.24E4
 Base Peak m/z= 462.32440-462.32902 F: FTMS + p ESI Full ms [100.00-1500.00] MS Hololenasp

NL: 1.52E5
 Base Peak m/z= 50.00000-1500.00000 F: FTMS + p ESI d Full ms2 348.33@hcd35.00 [50.00-375.00] MS Hololenasp

Hololenasp#485-500 RT: 1.21-1.25 AV: 4

F: FTMS + p ESI d Full ms2 348.33 ...

m/z	Intensity	Relative
53.76206	773.1	0.71
58.06611	3680.6	3.36
58.30168	725.6	0.66
59.54432	709.0	0.65
61.29871	749.6	0.68
64.21953	722.2	0.66
64.76434	707.2	0.64
65.00617	745.4	0.68
66.83898	771.4	0.70
67.36354	710.9	0.65
69.12132	876.1	0.80
78.51854	730.0	0.67
84.08139	3259.7	2.97
86.06060	27156.1	24.76
92.66871	808.7	0.74
93.73728	712.6	0.65
98.09693	109655.5	100.00
99.09278	801.2	0.73
99.09909	887.9	0.81
100.07628	4685.1	4.27
102.12580	796.4	0.73
103.08725	3577.2	3.26
103.79684	817.5	0.75
112.11284	7232.8	6.60
114.09160	21136.5	19.28
123.15590	848.7	0.77
126.12794	70918.6	64.67
131.11798	3337.0	3.04
133.96733	831.0	0.76
146.38384	919.0	0.84
151.85494	985.3	0.90
158.14171	1120.9	1.02
171.14994	4819.2	4.39
176.14000	2890.7	2.64
181.17093	1162.3	1.06
184.15915	1108.6	1.01
188.17673	4435.6	4.05
191.75474	895.3	0.82
192.18743	892.6	0.81
199.18086	21259.9	19.39
204.17123	12329.5	11.24
213.12875	864.4	0.79
213.33921	917.5	0.84
224.54495	980.5	0.89
229.31239	1044.5	0.95
244.39608	876.8	0.80
248.74763	1176.2	1.07
281.39863	956.8	0.87
289.25995	65147.2	59.41
292.37668	879.9	0.80
301.96831	906.7	0.83
325.97707	933.0	0.85
352.46930	1110.2	1.01
366.52654	1091.9	1.00
370.13630	943.3	0.86



NL: 1.30E6
 Hololenasp#487 RT: 1.22
 AV: 1 T: FTMS + p ESI
 Full lock ms
 [100.00-1500.00]

NL: 1.08E5
 Hololenasp#484-505 RT:
 1.21-1.25 AV: 4 F: FTMS
 + p ESI d Full ms2
 348.33@hcd35.00
 [50.00-375.00]