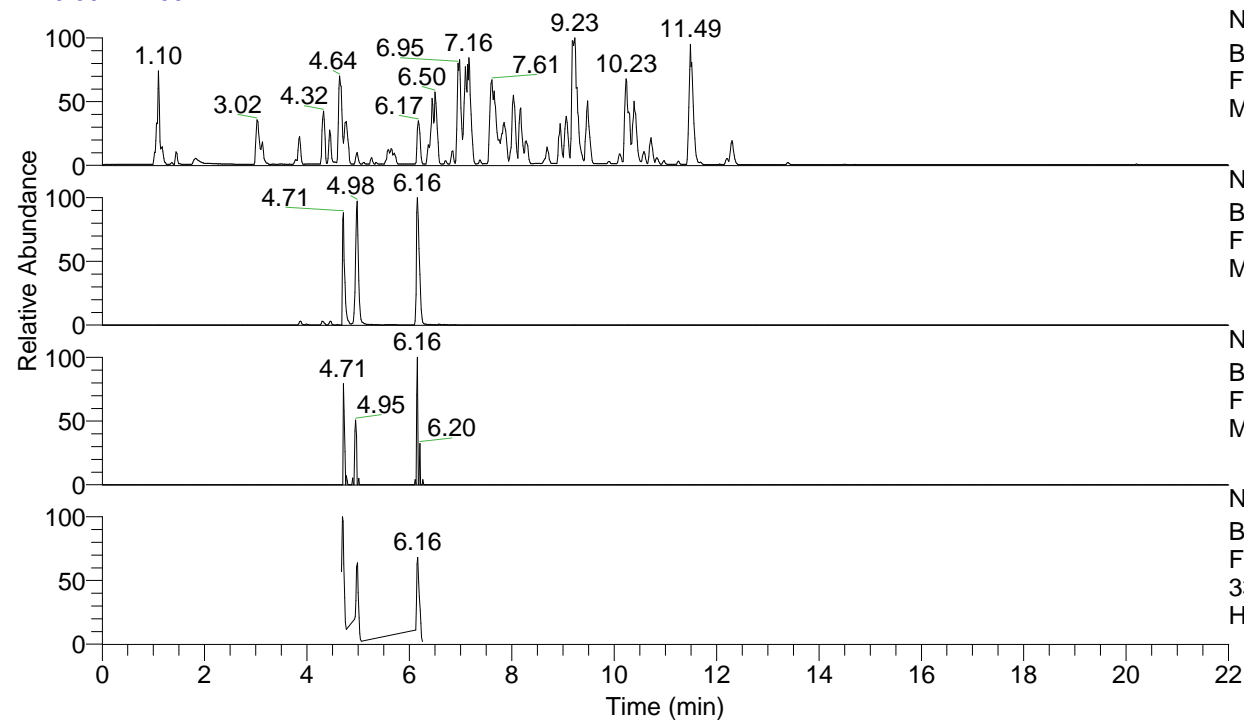


RT: 0.00 - 22.00



NL: 4.98E7  
 Base Peak m/z= 100.00000-1500.00000 F:  
 FTMS + p ESI Full ms [100.00-1500.00]  
 MS Hololenasp

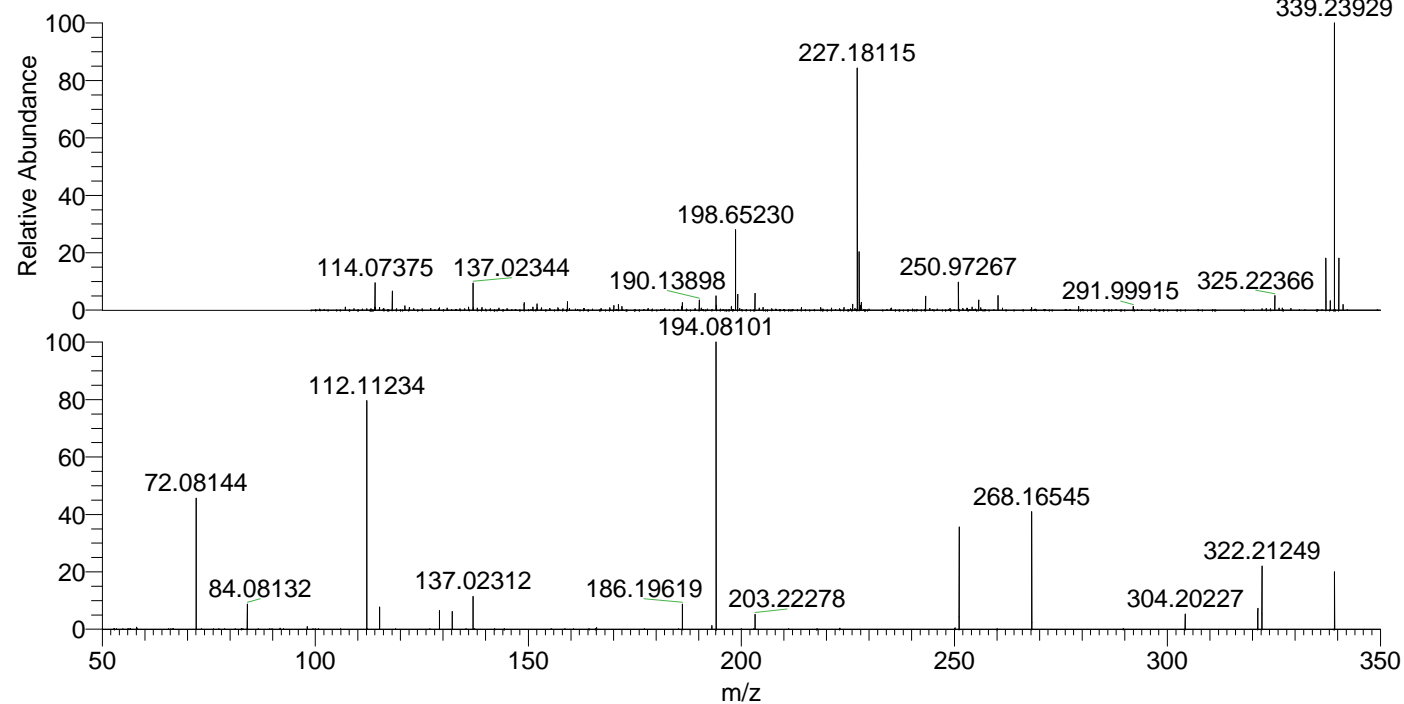
NL: 5.19E6  
 Base Peak m/z= 339.23792-339.24132 F:  
 FTMS + p ESI Full ms [100.00-1500.00]  
 MS Hololenasp

NL: 9.07E4  
 Base Peak m/z= 170.12287-170.12457 F:  
 FTMS + p ESI Full ms [100.00-1500.00]  
 MS Hololenasp

NL: 6.97E5  
 Base Peak m/z= 50.00000-1500.00000 F:  
 FTMS + p ESI d Full ms2  
 339.24@hcd35.00 [50.00-365.00] MS  
 Hololenasp

Hololenasp#1865-1889 RT: 4.68-4.74  
 F: FTMS + p ESI d Full ms2 339.24 ...  
 m/z= 50.00000-1000.00000

m/z	Intensity	Relative
58.06583	3116.4	0.68
72.08144	212851.7	46.15
84.08132	40484.7	8.78
98.09699	4583.7	0.99
112.11234	364590.7	79.05
115.12308	35469.4	7.69
129.13870	30498.6	6.61
132.14960	29073.4	6.30
137.02312	53029.5	11.50
166.05003	3003.6	0.65
186.19619	40536.9	8.79
193.09728	6025.8	1.31
194.08101	461187.4	100.00
203.22278	24033.5	5.21
250.15584	2555.8	0.55
251.13880	167223.1	36.26
268.16545	187826.6	40.73
304.20227	24232.1	5.25
321.22873	33626.8	7.29
322.21249	101711.1	22.05
339.23862	91911.4	19.93



NL: 4.45E6  
 Hololenasp#1879 RT:  
 4.71 AV: 1 T: FTMS + p  
 ESI Full lock ms  
 [100.00-1500.00]

NL: 4.58E5  
 Hololenasp#1863-1891  
 RT: 4.68-4.74 AV: 5 F:  
 FTMS + p ESI d Full ms2  
 339.24@hcd35.00  
 [50.00-365.00]